

October 26,
2020

ESC Meeting

ODOT // I-5 Rose Quarter Improvement Project

Independent Cover Assessment

ZGF



October 26, 2020

Welcome

Welcome + Setting the Stage Sam Imperati

- 01 Cover Discussion From the September ESC Meeting
- 02 An opportunity to answer questions & respond to feedback

Executive Steering Committee

Role: Directing the Independent Highway Cover Assessment consultant team in assessing the highway cover design and recommending scenarios to be presented to the OTC for direction and approval.

Independent Assessment Consultant Team

Role: The consultant team is solely responsible for the analyses developed and presented to the ESC, and will frame decisions, but not make recommendations.

October 26, 2020

Agenda

- 01 **September ESC Review**
Nolan Lienhart
- 02 **What We Heard**
Sam Imperati
- 03 **Role of the HC3**
Sam Imperati
- 04 **Highway Cover Examples**
Nolan Lienhart
- 05 **Next Steps**
Sam Imperati

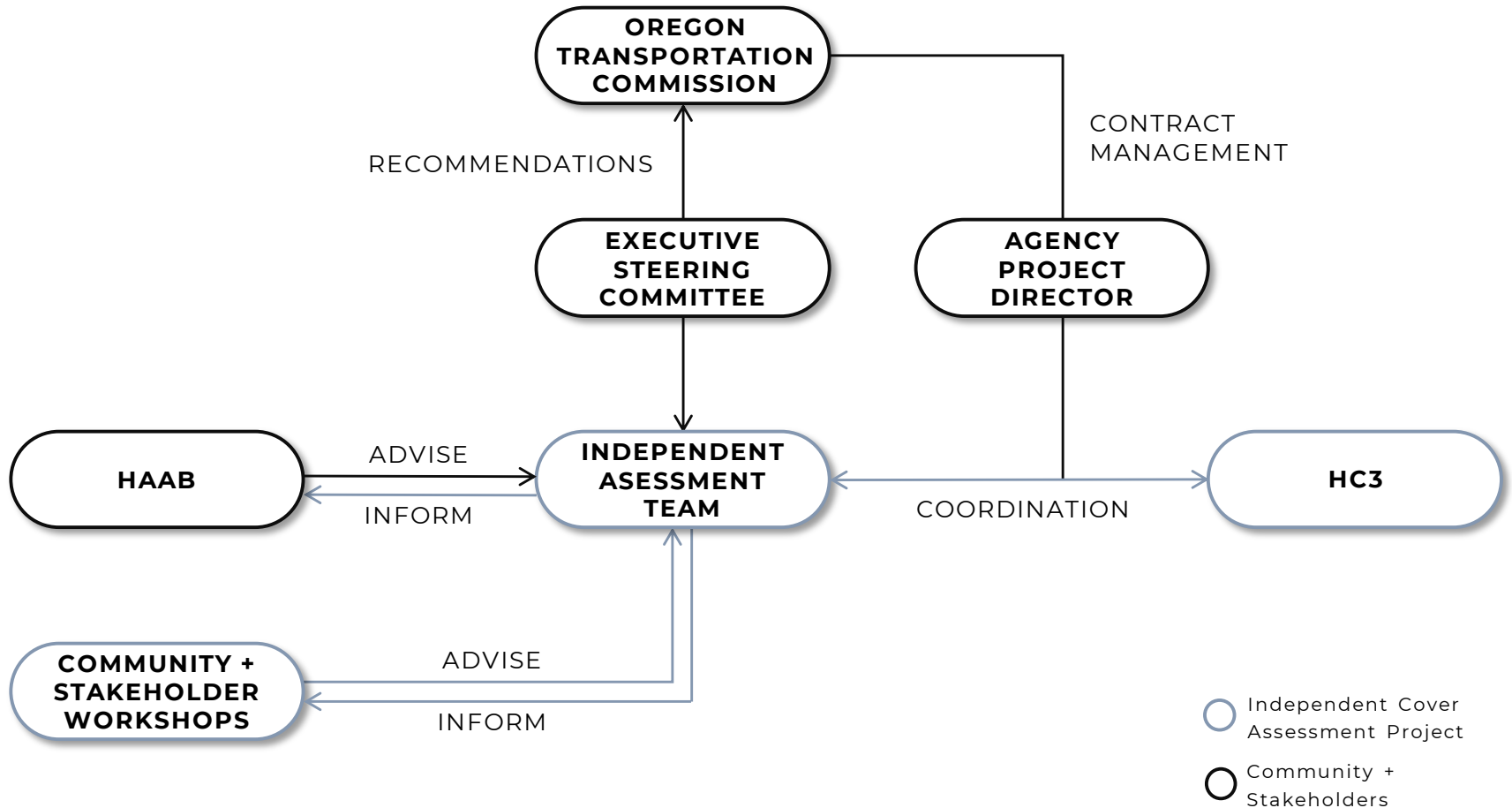
September ESC Review

The image features a teal-tinted photograph of the Smith Tower in Seattle, Washington. The tower's distinctive steel lattice structure is the central focus, extending from a large triangular base to a sharp, pointed spire. The background shows a cityscape with various buildings and a forested hillside under a cloudy sky. The text 'September ESC Review' is overlaid in a large, white, sans-serif font across the middle of the image.

Three Questions to be Answered

- 01** How can this project serve community aspirations on the highway covers and areas immediately adjacent to the highway covers, within area of potential impact as defined in the EA?
- 02** What modifications to the current design and configuration of the highway covers would be needed to reflect a broader community vision for development of the Project Area?
- 03** Are there other architectural and engineering considerations to feasibly promote economic development and growth potential, consistent with the community's vision?

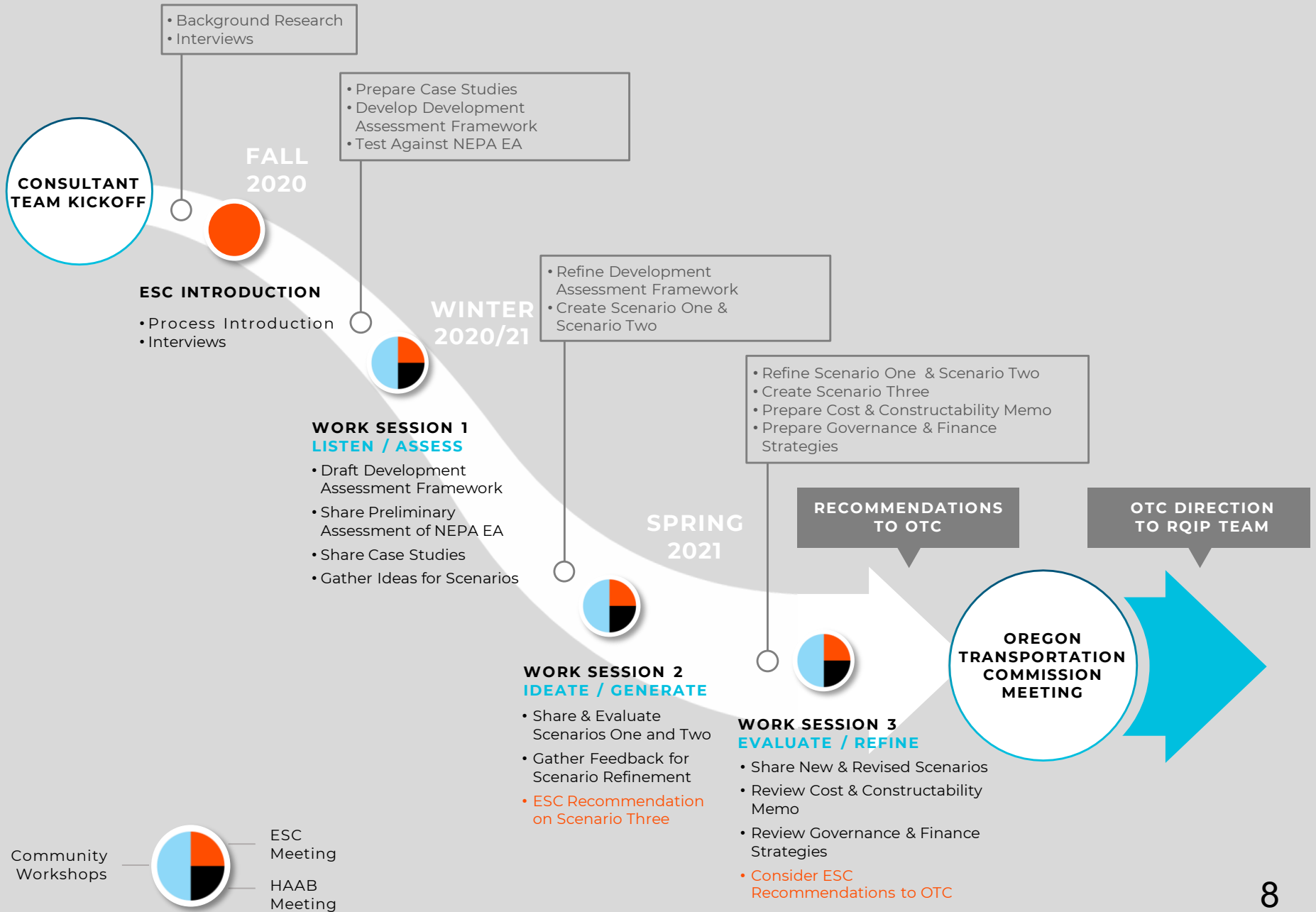
Independent Cover Assessment Organizational Chart



Scenarios

Base Case The NEPA Environmental Assessment

- 01** Scenario One: Limited to the NEPA Environmental Assessment Area of Potential Impact (API)
- 02** Scenario Two: May extend beyond the NEPA Environmental Assessment API.
- 03** Scenario Three: Determined by the ESC.



September ESC Meeting Review:

Any questions, comments, or suggestions?

A photograph of a brick building with a sign that reads "PUBLIC LIBRARY NORTH PORTLAND BRANCH". In front of the building, several large informational posters are displayed on stands. The posters are titled "Existing Conditions", "Play", "Discovery", and "Housing". A group of people, including a man with a stroller, a woman, a man with a bicycle, and a woman, are gathered around the posters, looking at them. To the left, a person is leaning over a bus stop shelter. The entire image has a blue tint.

What We Heard

September ESC Comments:

1) Independence & Protection:


- a) How can ESC ensure Independent Cover Assessment is protected in order to be able to carry on independent assessment and not have backlash against you?
 - i. One-on-one interviews are discussing ways to ensure ICA team's independence through oversight, participation, and proactive governance?
 - ii. ESC is our client for Independent Cover Assessment; ICA analyses support ESC recommendation to OTC

- b) What relationships do ICA consultant team firms have with project stakeholders?
 - i. Independence refers to our separation from ODOT's Rose Quarter Improvement Project decision-making hierarchy

September ESC Comments:

2) Meaningful Engagement Requires Trust

- a. Some community members may not feel comfortable participating in another government agency planning effort. What are our plans to ensure authentic community engagement?
 - i. We will be engaging community members and soliciting their contributions through Community Workshops and online surveys, and potentially focused Stakeholder Meetings
 - ii. We're starting to plan these activities by using our one-on-one meetings with ESC members to identify methods of engagement that will provide a welcoming invitation, even to those who may be skeptical



**Role of the
Highway Covers
Coordinating Committee**

Current HC3 Members

1. **ODOT:** Megan Channell
2. **Metro:** Ally Holmqvist
3. **Portland Public Schools:** Courtney Westling

Multnomah County, Albina Vision Trust, and City of Portland Bureaus were invited members, but have declined to participate.

Other Invited Participants

1. **ODOT Staff & Consultants:** *Brendan Finn, Monica Blanchard, Cliff Serres, April deLeon-Galloway, John Maloney (WSP), Page Phillips Strickler (Owner's Rep), Dr. Holt, Ericka Warren (ESC & HAAB Facilitators)*
2. **Metro:** *Brian Moore*
3. **Consultant Team:** *Charles Kelley, Julie Bronder, Nolan Lienhart, Steven Lewis, Kate Brooks, Josh Peacock (ZGF); Sam Imperati, Devin Howington (ICM); Olivia Moss (HR&A); Kate White (Arup); Suenn Ho (SHD); and others as needed*

HC3 Role

- The HC3 will serve as the staff working group to support the Independent Cover Assessment Team's development and refinement of the three development scenarios and to review and provide input on the deliverables (to be considered by) the ESC and OTC.
- The HC3 (on behalf of the ESC) will provide a forum for the discussion of ICA work progression, schedule, change management, and other relevant topics.
- **Discussion:** Is the current HC3 membership sufficient to perform this role? Should additional community representatives be added?



Highway Cover Examples

Highway Cover Examples

1. Introduction to different types of highway covers
2. Understanding how highway covers fit into their context
3. Successful highway covers involve creative design, partnerships, governance and financing strategies
4. We will return to these and other examples in more detail as we develop scenarios together with you

Klyde Warren Park **Dallas**

- 5.2 acre public bridging downtown & arts districts
- Includes children's park, dog park, great lawn, and five water features
- Includes 6,000 square foot restaurant and performance pavillion
- Funding included \$10 million donation for naming rights
- Operated by Woodall Rodgers Park Foundation



Klyde Warren Park Dallas

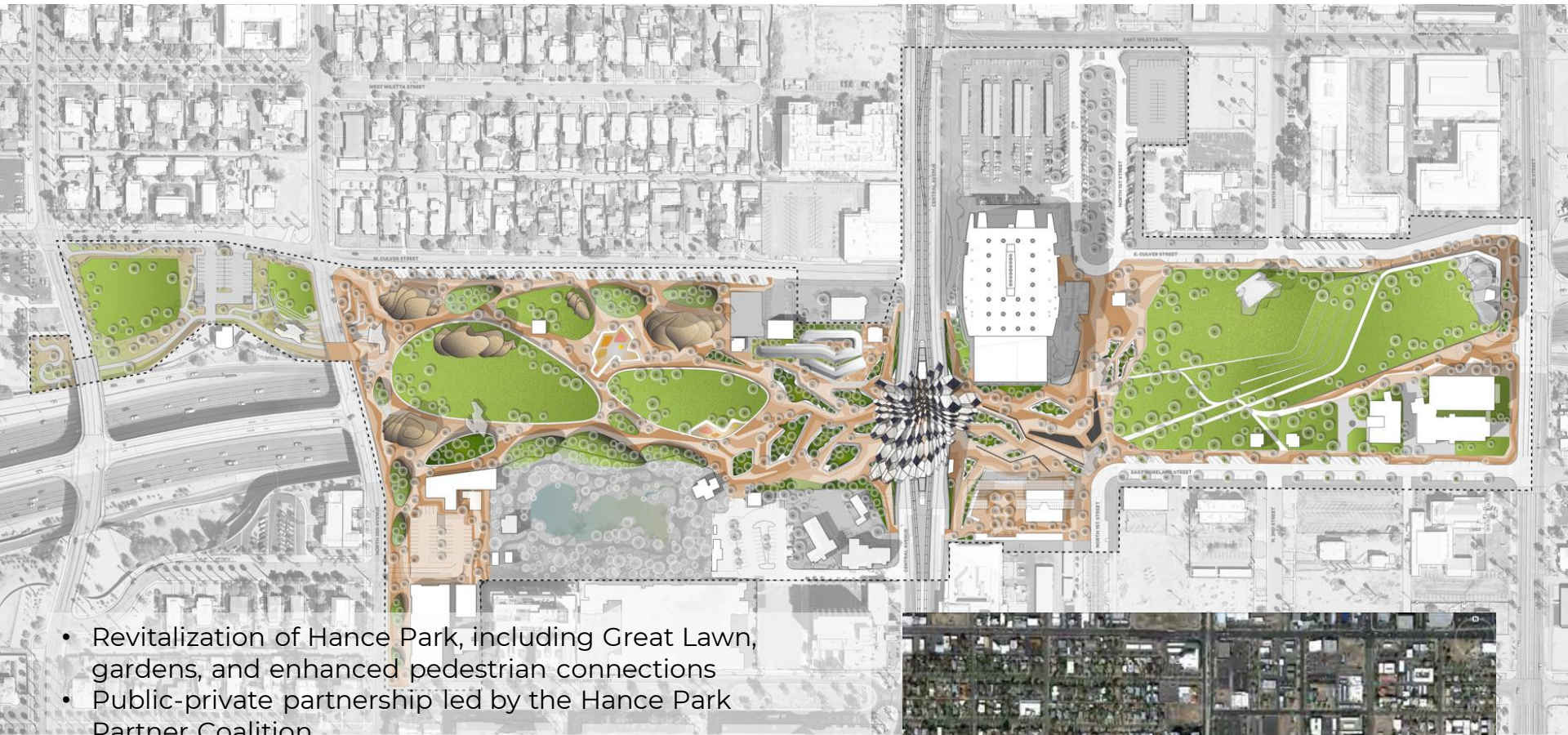


Fenway Center **Boston**



- 90,000 sq. ft. deck over the freeway
- \$1 Billion, two-tower complex with lab and office space for life sciences companies
- 99-year lease of air rights from MassDOT
- Beginning construction this month

Hance Park Phoenix



- Revitalization of Hance Park, including Great Lawn, gardens, and enhanced pedestrian connections
- Public-private partnership led by the Hance Park Partner Coalition
- Funding estimated at \$100 million, will come from public and private sources.
- City of Phoenix has dedicated \$15 million of voter-approved Phoenix Parks and Preserve Initiative (PPPI) funds toward the project. A fundraising campaign is being led by the Phoenix Community Alliance and Hance Park Conservancy to generate private funding.



Presidio Parkway & Tunnel Tops San Francisco

- 14-acre park destination over freeway tunnels, plus transition areas
- Supports Presidio Park educational & recreational functions, including Gateway Plaza, Campfire Circle, Golden Gate Meadow, Cliff Walk, and Presidio Steps
- Adjacent areas include buildings with Youth Center Campus with learning labs, field station, and playscape

Presidio Parkway & Tunnel Tops San Francisco



Presidio Parkway & Tunnel Tops San Francisco



Highway Cover Examples

1. What questions do you have about highway covers?
2. Are there examples we didn't explore that you'd like to make sure we review?

A teal-tinted photograph of a bridge walkway. The walkway is paved and has a metal railing on the right side. In the background, a city skyline is visible, featuring several tall buildings, including two prominent ones with spires. The sky is overcast with clouds. The overall scene is viewed from a perspective looking down the length of the bridge.

Highway Covers Next Steps

Next Steps

1. Any additional questions or comments?
2. Complete 1-on-1 ESC Interviews
3. Topics on next ESC Agenda:
 - a) Facilitation Needs Assessment
 - b) Refined plan for community workshops & engagement