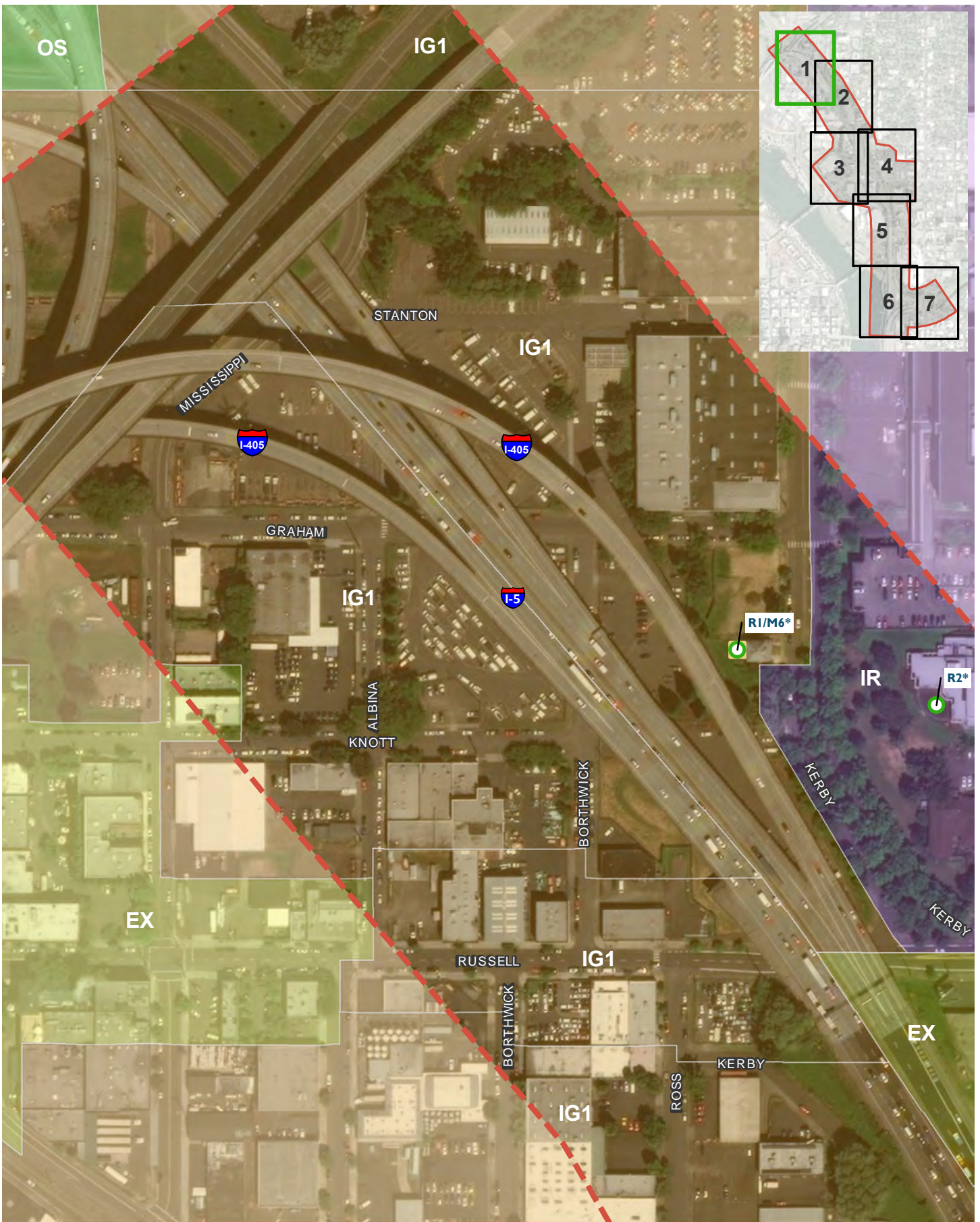




# Appendix A. Figures 9, 10, and 11

Figure descriptions for the images in this appendix have been provided as alternative text usable by accessibility software. If needed, additional figure interpretation for this appendix is available from the ODOT Senior Environmental Project Manager at (503) 731-4804.



**I-5 ROSE QUARTER IMPROVEMENT PROJECT**

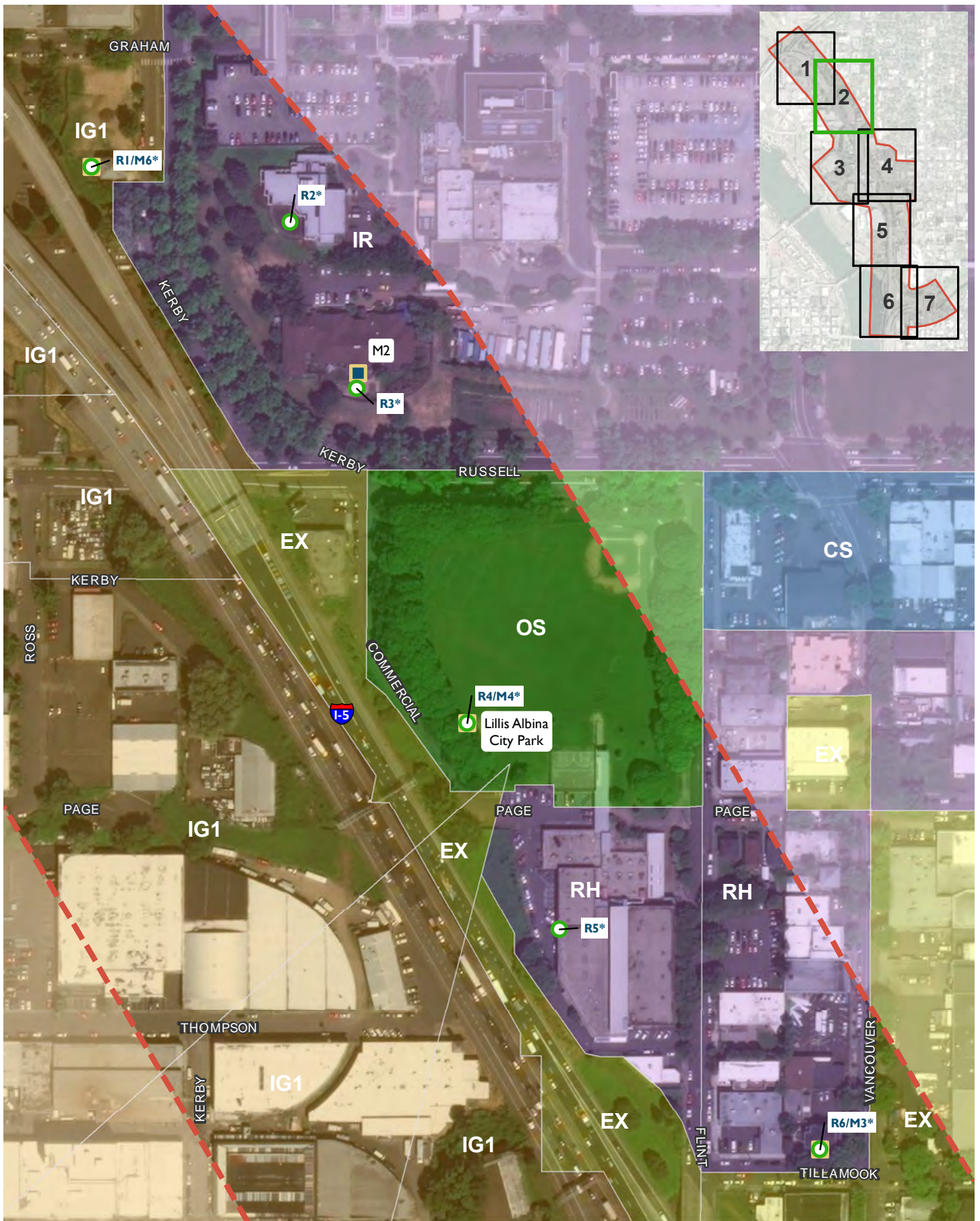
Data Source: Project Features - HDR; Basemap - ODOT, ESRI; Zoning - City of Portland

\* Noise levels predicted at receptor meet or exceed the NAAC under some conditions. See Table 7 of the Noise Study Technical Memorandum for predicted peak hour noise levels.

- Noise Receptor\*
- Noise monitoring locations
- Noise Report Study Area
- 0 100 200 Feet
- Commercial (CS, CX)
- Employment (EX, EGI)
- Industrial (IG1)
- Residential (IR, R2, RH, RX)
- Open Space (OS)

**I-5 ROSE QUARTER NOISE STUDY**  
**CITY OF PORTLAND ZONING**

FIGURE 9.1



**I-5 ROSE QUARTER IMPROVEMENT PROJECT**

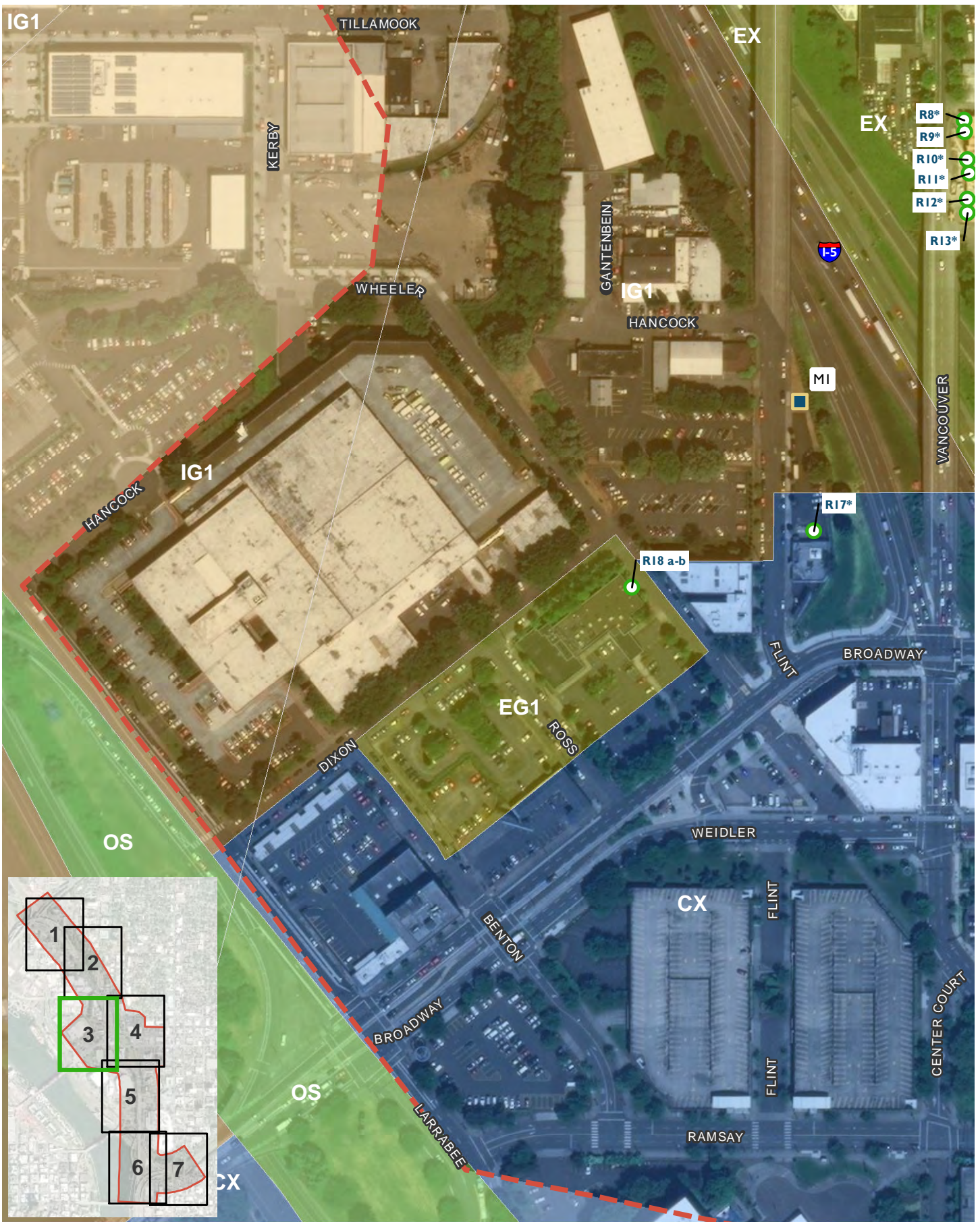
Data Source: Project Features - HDR; Basemap - ODOT, ESRI; Zoning - City of Portland  
 \* Noise levels predicted at receptor meet or exceed the NAAC under some conditions. See Table 7 of the Noise Study Technical Memorandum for predicted peak hour noise levels.

- Noise Receptor\*
  - Noise monitoring locations
  - Noise Report Study Area
  - Commercial (CS, CX)
  - Employment (EX, EGI)
  - Industrial (IGI)
  - Residential (IR, R2, RH, RX)
  - Open Space (OS)
- 0 100 200  
 Feet

**I-5 ROSE QUARTER NOISE STUDY**

**CITY OF PORTLAND ZONING**

FIGURE 9.2



**I-5 ROSE QUARTER IMPROVEMENT PROJECT**

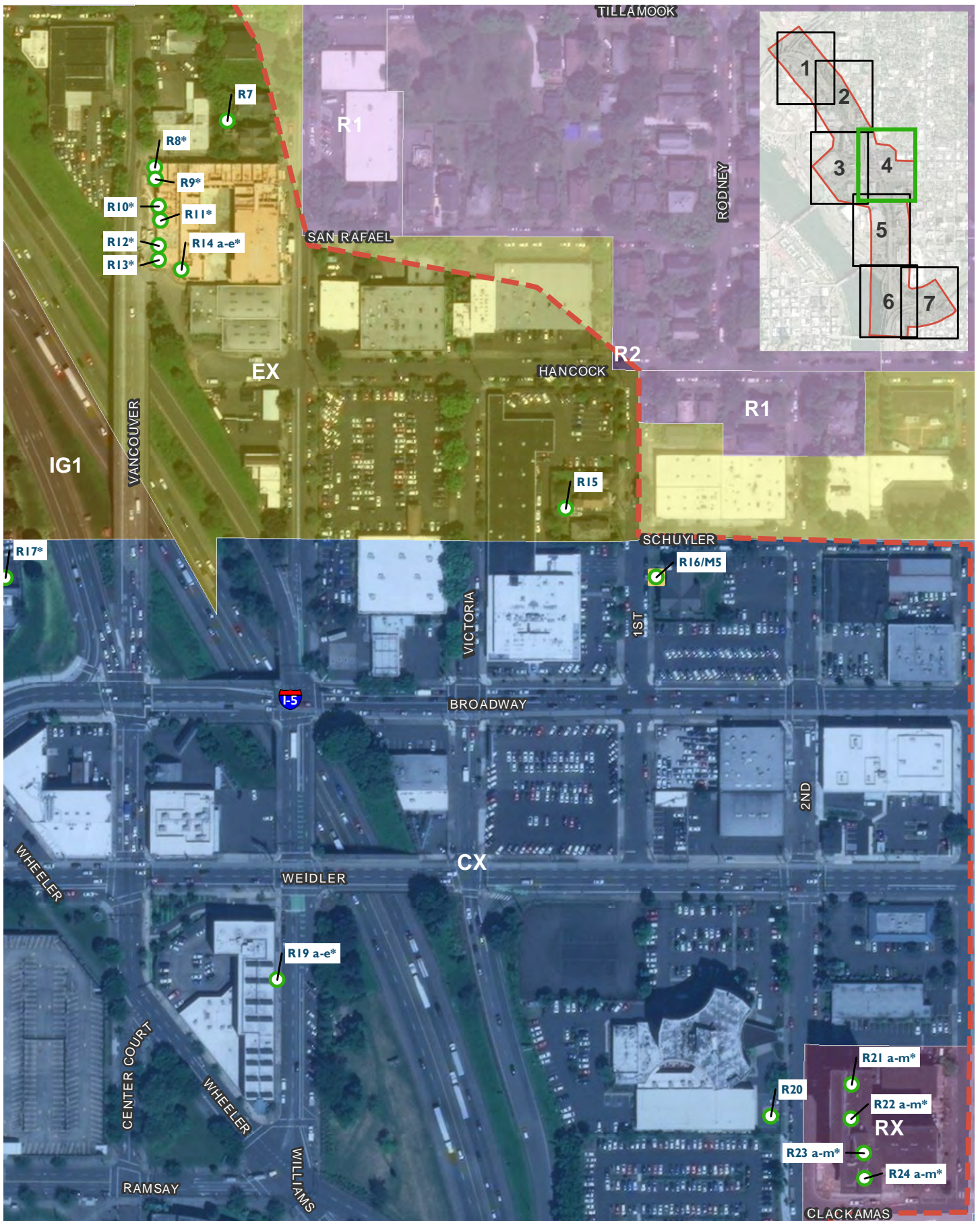
Data Source: Project Features - HDR; Basemap - ODOT, ESRI; Zoning - City of Portland

\* Noise levels predicted at receptor meet or exceed the NAAC under some conditions. See Table 7 of the Noise Study Technical Memorandum for predicted peak hour noise levels.

- Noise Receptor\*
  - Noise monitoring locations
  - Noise Report Study Area
  - Commercial (CX, CG)
  - Employment (EX, EG1)
  - Industrial (IG1)
  - Residential (IR, R2, RH, RX)
  - Open Space (OS)
- 0 100 200**  
Feet

**I-5 ROSE QUARTER NOISE STUDY**  
**CITY OF PORTLAND ZONING**

FIGURE 9.3



**I-5 ROSE QUARTER IMPROVEMENT PROJECT**

Data Source: Project Features - HDR; Basemap - ODOT, ESRI; Zoning - City of Portland  
 \* Noise levels predicted at receptor meet or exceed the NAAC under some conditions. See Table 7 of the Noise Study Technical Memorandum for predicted peak hour noise levels.

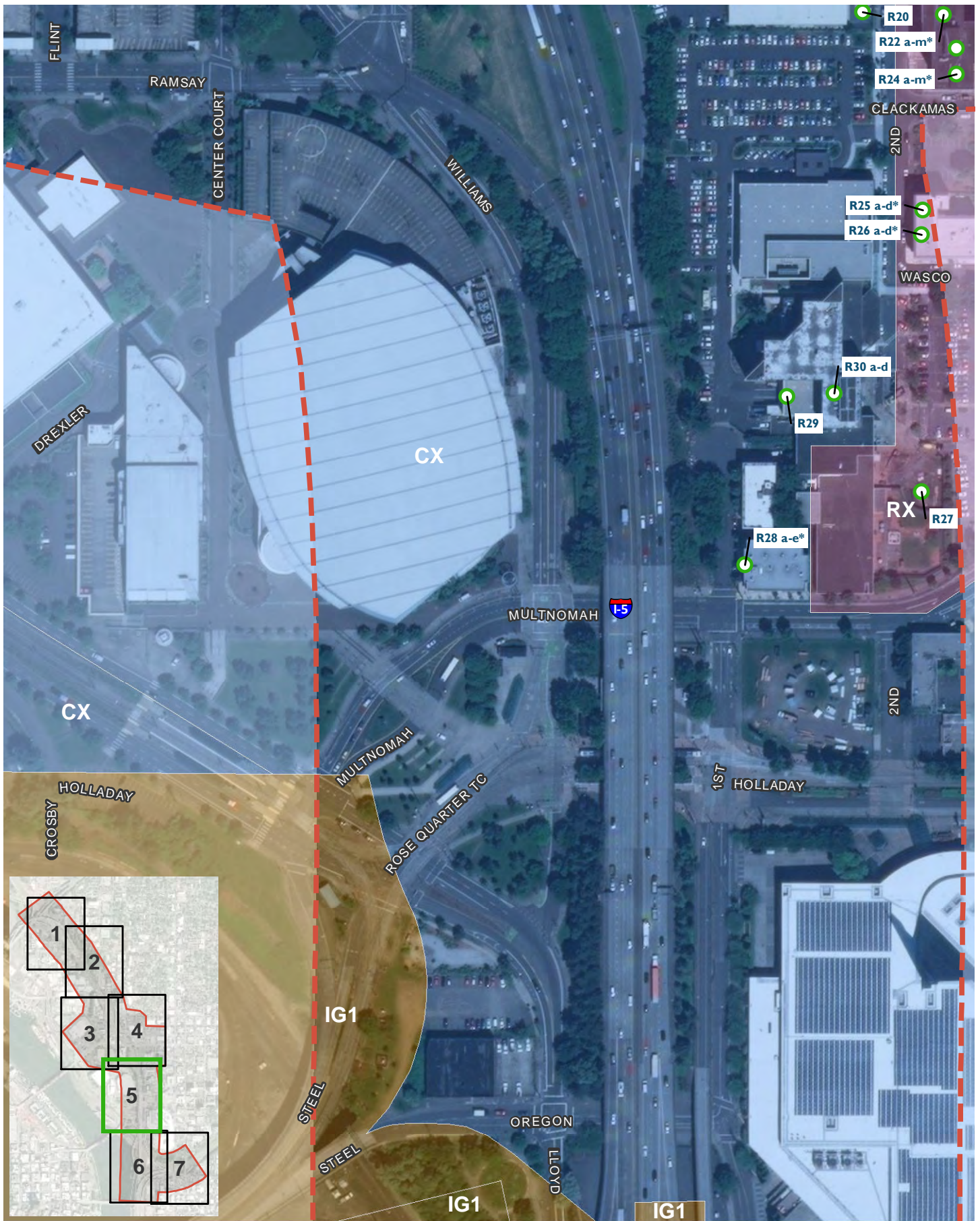
- Noise Receptor\*
- Noise monitoring locations
- Noise Report Study Area
- Commercial (CS, CX)
- Employment (EX, EGI)
- Industrial (IG1)
- Residential (R1, R2, RH, RX)
- Open Space (OS)



**I-5 ROSE QUARTER NOISE STUDY**

**CITY OF PORTLAND ZONING**

FIGURE 9.4



**I-5 ROSE QUARTER IMPROVEMENT PROJECT**

Data Source: Project Features - HDR; Basemap - ODOT, ESRI; Zoning - City of Portland  
 \* Noise levels predicted at receptor meet or exceed the NAAC under some conditions. See Table 7 of the Noise Study Technical Memorandum for predicted peak hour noise levels.

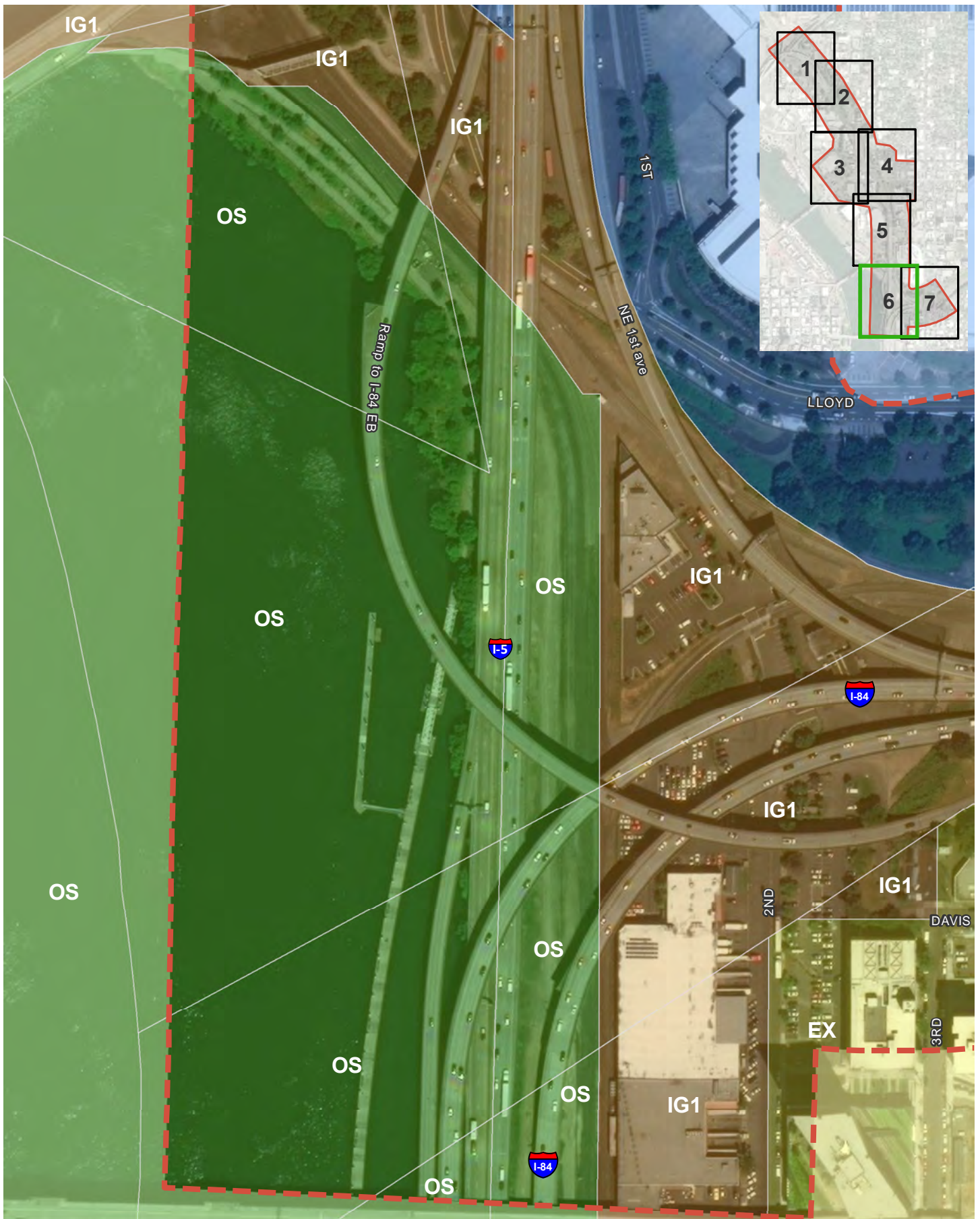
- Noise Receptor\*
- Noise monitoring locations
- Noise Report Study Area
- Commercial (CS, CX)
- Employment (EX, EGI)
- Industrial (IGI)
- Residential (IR, R2, RH, RX)
- Open Space (OS)



**I-5 ROSE QUARTER NOISE STUDY**

**CITY OF PORTLAND ZONING**

FIGURE 9.5



**I-5 ROSE QUARTER IMPROVEMENT PROJECT**

Data Source: Project Features - HDR; Basemap - ODOT, ESRI; Zoning - City of Portland  
 \* Noise levels predicted at receptor meet or exceed the NAAC under some conditions. See Table 7 of the Noise Study Technical Memorandum for predicted peak hour noise levels.

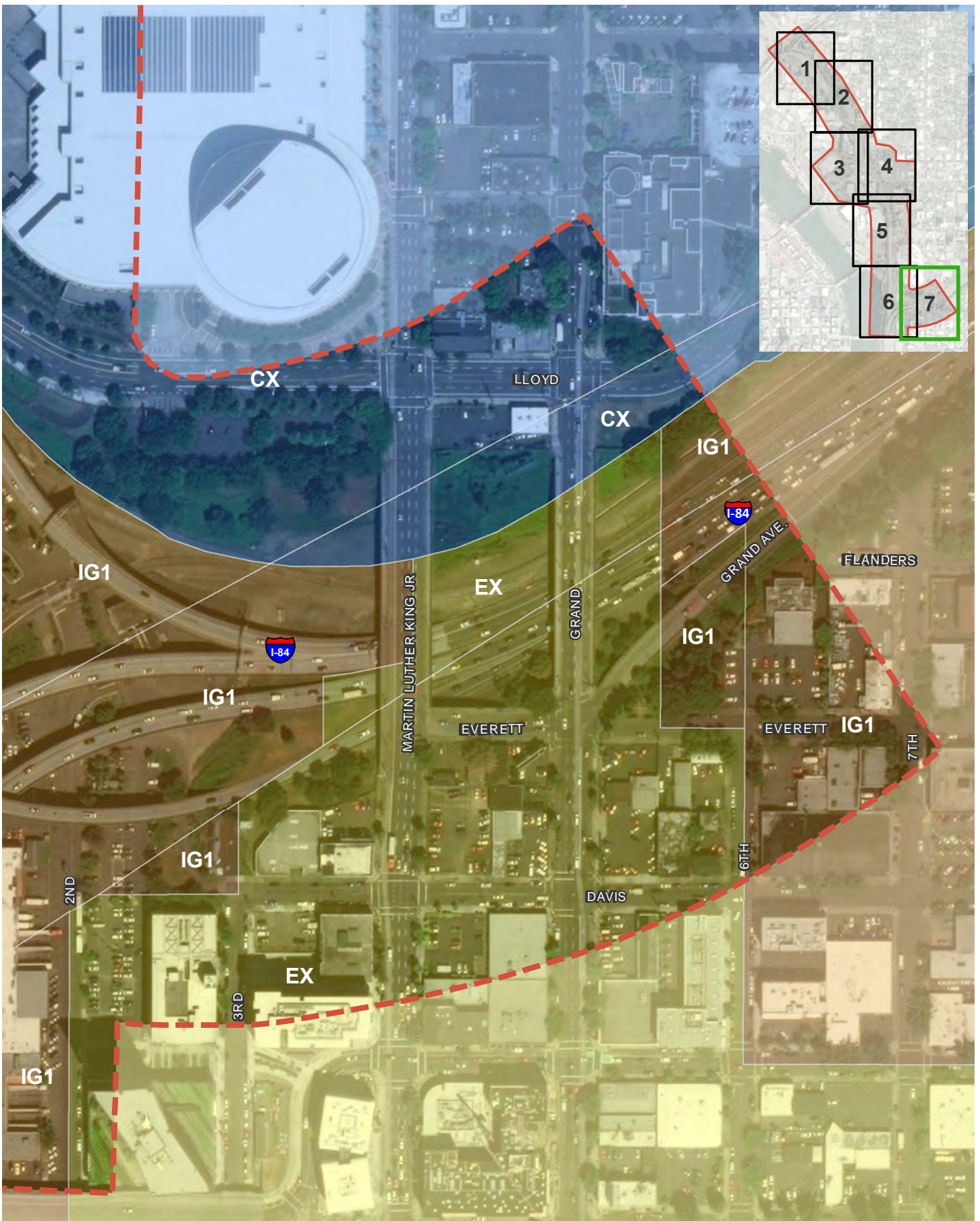
- Noise Receptor\*
- Noise monitoring locations
- Noise Report Study Area
- 0 100 200 Feet
- Commercial (CS, CX)
- Employment (EX, EGI)
- Industrial (IG1)
- Residential (IR, RZ, RH, RX)
- Open Space (OS)

**I-5 ROSE QUARTER NOISE STUDY**

**CITY OF PORTLAND ZONING**

FIGURE 9.6





**I-5 ROSE QUARTER IMPROVEMENT PROJECT**

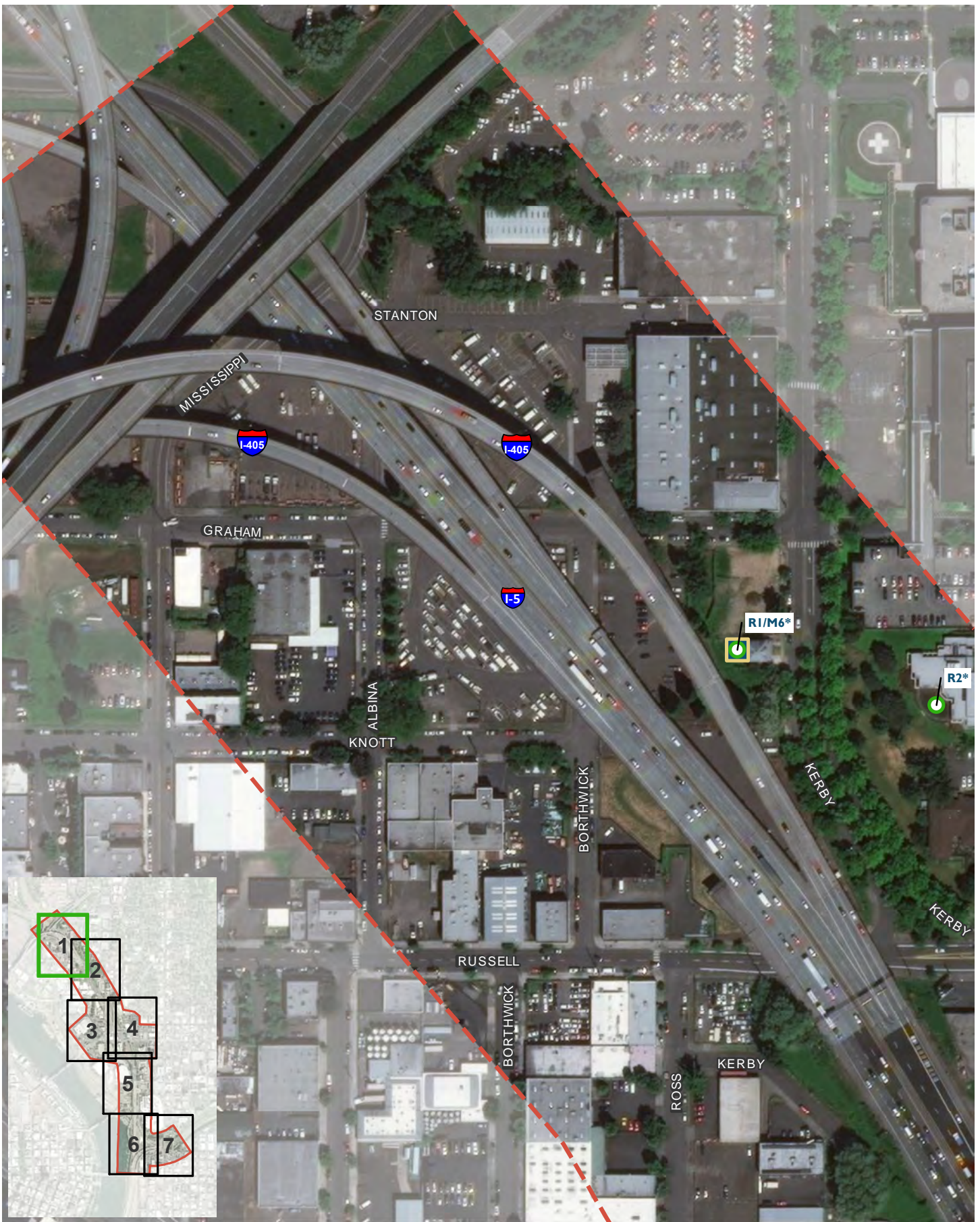
Data Source: Project Features - HDR; Basemap - ODOT, ESRI; Zoning - City of Portland

\* Noise levels predicted at receptor meet or exceed the NAAC under some conditions. See Table 7 of the Noise Study Technical Memorandum for predicted peak hour noise levels.

- Noise Receptor\*
- Noise monitoring locations
- Noise Report Study Area
- 0 100 200 Feet
- Commercial (CS, CX)
- Employment (EX, EG1)
- Industrial (IG1)
- Residential (IR, R2, RH, RX)
- Open Space (OS)

**I-5 ROSE QUARTER NOISE STUDY**  
**CITY OF PORTLAND ZONING**

FIGURE 9.7



Data Source: Project Features - HDR; Basemap - ODOT, ESRI

\* Noise levels predicted at receptor meet or exceed the NAAC under some conditions. See Table 7 of the Noise Study Technical Memorandum for predicted peak hour noise levels.

- Noise Receptor\*
- Noise monitoring locations
- Noise Report Study Area



## I-5 ROSE QUARTER NOISE STUDY

**EXISTING ROADWAY AND FUTURE  
(2045) NO BUILD ALTERNATIVE**

FIGURE 10.1



**I-5 ROSE QUARTER  
IMPROVEMENT PROJECT**

Data Source: Project Features - HDR; Basemap - ODOT, ESRI

\* Noise levels predicted at receptor meet or exceed the NAAC under some conditions. See Table 7 of the Noise Study Technical Memorandum for predicted peak hour noise levels.

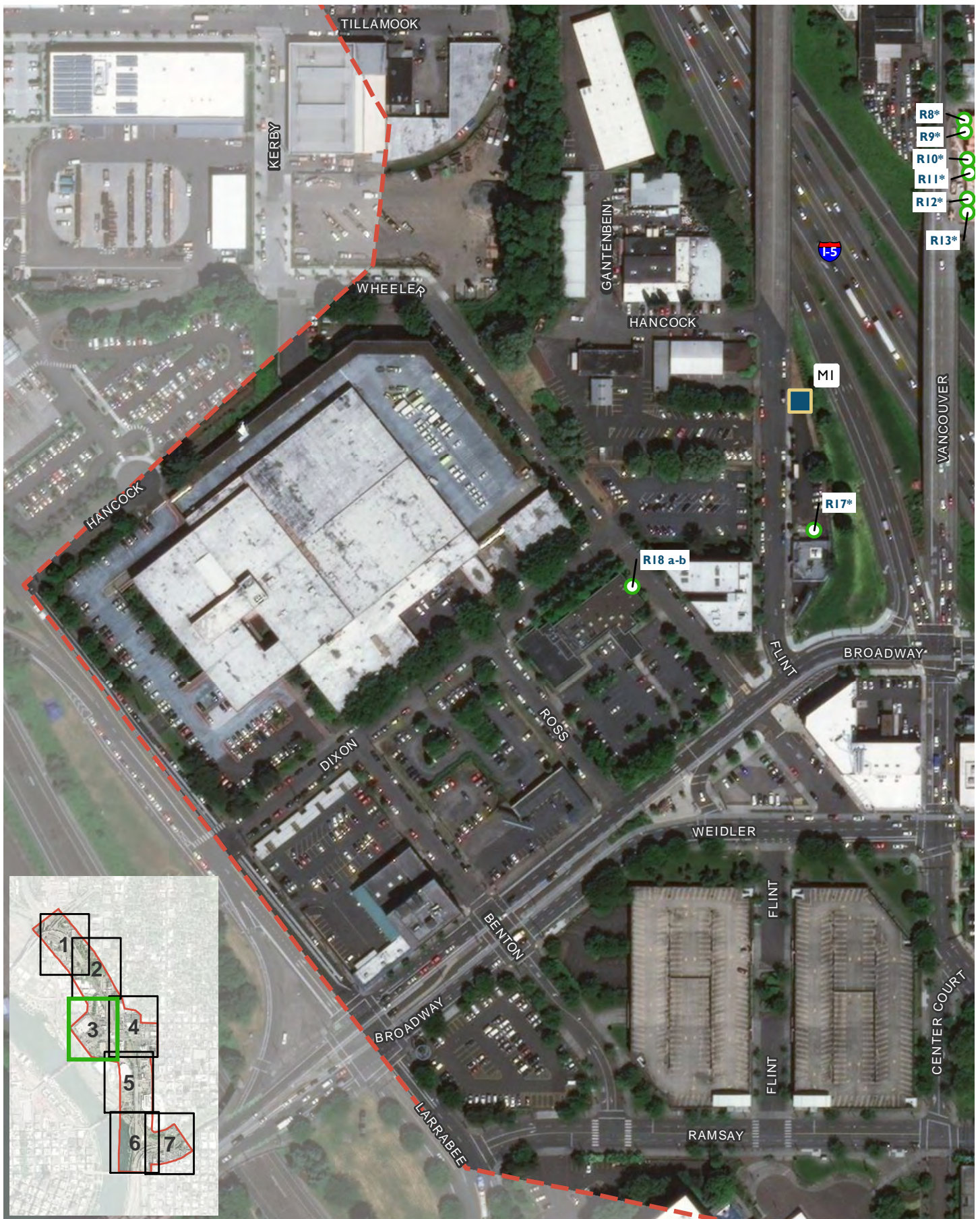
- Noise Receptor\*
- Noise monitoring locations
- Noise Report Study Area



**I-5 ROSE QUARTER NOISE STUDY**

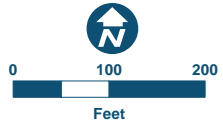
**EXISTING ROADWAY AND FUTURE  
(2045) NO BUILD ALTERNATIVE**

FIGURE 10.2



**I-5 ROSE QUARTER IMPROVEMENT PROJECT**  
 Data Source: Project Features - HDR; Basemap - ODOT, ESRI  
 \* Noise levels predicted at receptor meet or exceed the NAAC under some conditions. See Table 7 of the Noise Study Technical Memorandum for predicted peak hour noise levels.

- Noise Receptor\*
- Noise monitoring locations
- Noise Report Study Area



**I-5 ROSE QUARTER NOISE STUDY**  
**EXISTING ROADWAY AND FUTURE (2045) NO BUILD ALTERNATIVE**

FIGURE 10.3



**I-5 ROSE QUARTER IMPROVEMENT PROJECT**  
 Data Source: Project Features - HDR; Basemap - ODOT, ESRI

\* Noise levels predicted at receptor meet or exceed the NAAC under some conditions. See Table 7 of the Noise Study Technical Memorandum for predicted peak hour noise levels.

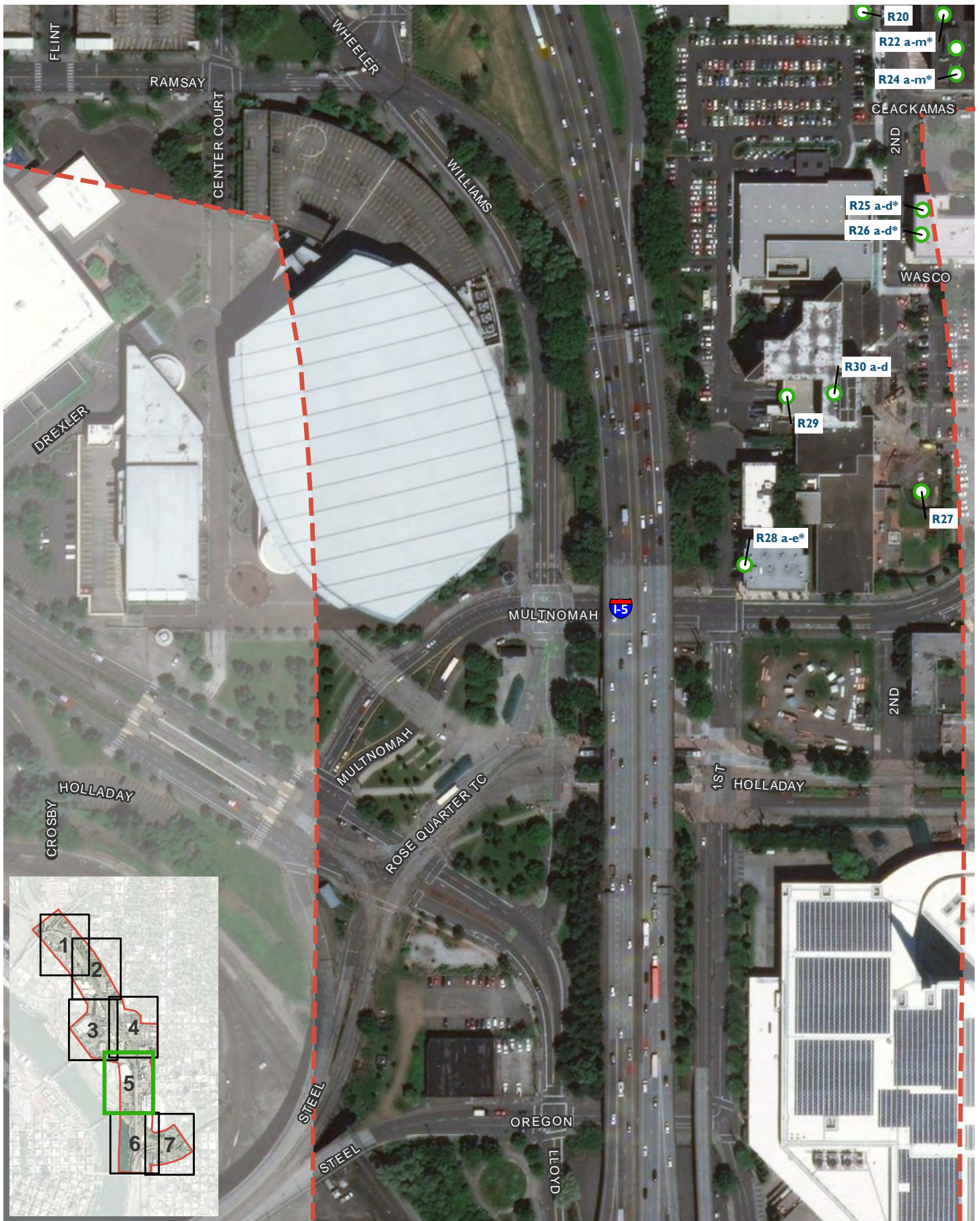
- Noise Receptor\*
- Noise monitoring locations
- Noise Report Study Area



**I-5 ROSE QUARTER NOISE STUDY**

**EXISTING ROADWAY AND FUTURE (2045) NO BUILD ALTERNATIVE**

FIGURE 10.4



**I-5 ROSE QUARTER IMPROVEMENT PROJECT**

Data Source: Project Features - HDR; Basemap - ODOT, ESRI

\* Noise levels predicted at receptor meet or exceed the NAAC under some conditions. See Table 7 of the Noise Study Technical Memorandum for predicted peak hour noise levels.

- Noise Receptor\*
- Noise monitoring locations
- Noise Report Study Area



**I-5 ROSE QUARTER NOISE STUDY**

**EXISTING ROADWAY AND FUTURE (2045) NO BUILD ALTERNATIVE**

FIGURE 10.5



**I-5 ROSE QUARTER IMPROVEMENT PROJECT**  
 Data Source: Project Features - HDR; Basemap - ODOT, ESRI  
 \* Noise levels predicted at receptor meet or exceed the NAAC under some conditions. See Table 7 of the Noise Study Technical Memorandum for predicted peak hour noise levels.

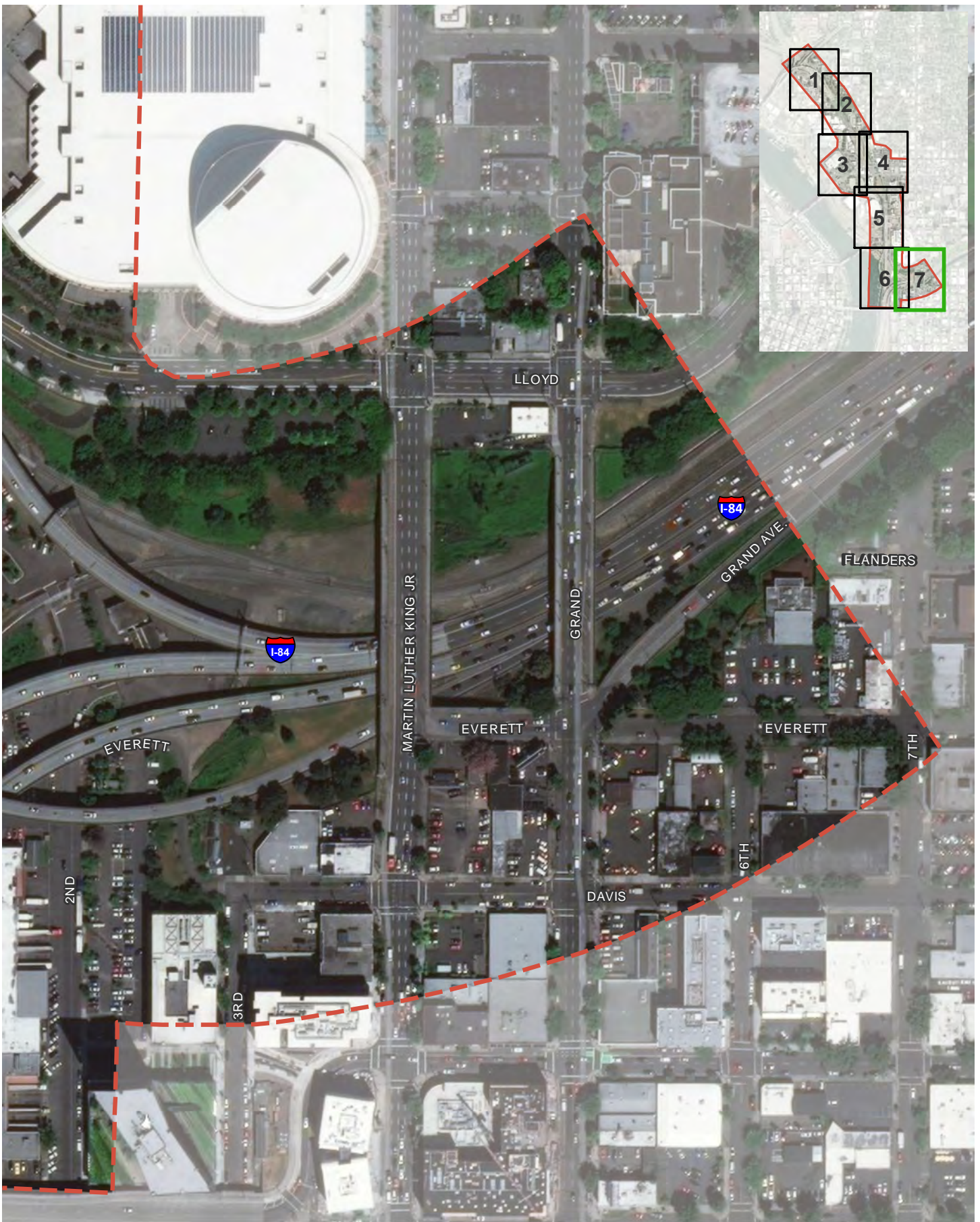
- Noise Receptor\*
- Noise monitoring locations
- Noise Report Study Area



**I-5 ROSE QUARTER NOISE STUDY**

**EXISTING ROADWAY AND FUTURE (2045) NO BUILD ALTERNATIVE**

FIGURE 10.6



**I-5 ROSE QUARTER  
IMPROVEMENT PROJECT**

Data Source: Project Features - HDR; Basemap - ODOT, ESRI

\* Noise levels predicted at receptor meet or exceed the NAAC under some conditions. See Table 7 of the Noise Study Technical Memorandum for predicted peak hour noise levels.

- Noise Receptor\*
- Noise monitoring locations
- Noise Report Study Area

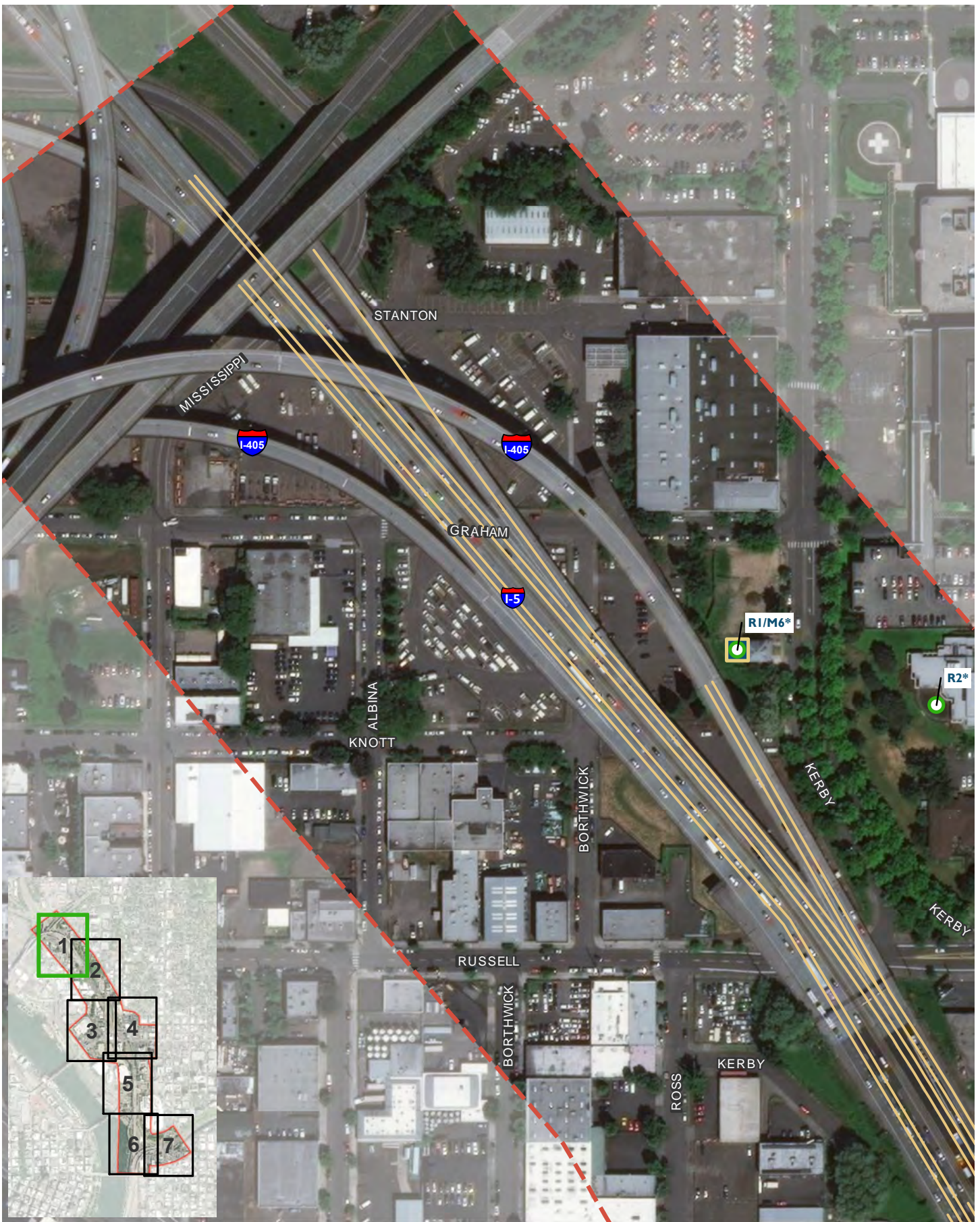


**I-5 ROSE QUARTER NOISE STUDY**

**EXISTING ROADWAY AND FUTURE  
(2045) NO BUILD ALTERNATIVE**




FIGURE I0.7





**I-5 ROSE QUARTER IMPROVEMENT PROJECT**

Data Source: Project Features - HDR; Basemap - ODOT, ESRI; Zoning - City of Portland  
 \* Noise levels predicted at receptor meet or exceed the NAAC under some conditions. See Table 7 of the Noise Study Technical Memorandum for predicted peak hour noise levels.

-  Noise Receptor\*
-  Noise monitoring locations
-  Future Design Centerline
-  Noise Report Study Area
-  Cover



I-5 ROSE QUARTER NOISE STUDY  
**FUTURE (2045) BUILD ALTERNATIVE**

FIGURE 11.1



**I-5 ROSE QUARTER IMPROVEMENT PROJECT**

Data Source: Project Features - HDR; Basemap - ODOT, ESRI; Zoning - City of Portland  
 \* Noise levels predicted at receptor meet or exceed the NAAC under some conditions. See Table 7 of the Noise Study Technical Memorandum for predicted peak hour noise levels.

- Noise Receptor\*
- Noise monitoring locations
- Future Design Centerline
- Noise Report Study Area
- Cover



**I-5 ROSE QUARTER NOISE STUDY  
 FUTURE (2045) BUILD ALTERNATIVE**

FIGURE 11.2



**I-5 ROSE QUARTER IMPROVEMENT PROJECT**

Data Source: Project Features - HDR; Basemap - ODOT, ESRI; Zoning - City of Portland  
 \*Noise levels predicted at receptor meet or exceed the NAAC under some conditions. See Table 7 of the Noise Study Technical Memorandum for predicted peak hour noise levels.

- Noise Receptor\*
- Noise monitoring locations
- Future Design Centerline
- - - Noise Report Study Area
- Cover



**I-5 ROSE QUARTER NOISE STUDY**

**FUTURE (2045) BUILD ALTERNATIVE**

FIGURE 11.3



**I-5 ROSE QUARTER IMPROVEMENT PROJECT**

Data Source: Project Features - HDR; Basemap - ODOT, ESRI; Zoning - City of Portland  
 \*Noise levels predicted at receptor meet or exceed the NAAC under some conditions. See Table 7 of the Noise Study Technical Memorandum for predicted peak hour noise levels.

- Noise Receptor\*
- Noise monitoring locations
- Future Design Centerline
- Noise Report Study Area
- Cover



**I-5 ROSE QUARTER NOISE STUDY**

**FUTURE (2045) BUILD ALTERNATIVE**

FIGURE 11.4



**I-5 ROSE QUARTER IMPROVEMENT PROJECT**

Data Source: Project Features - HDR; Basemap - ODOT, ESRI; Zoning - City of Portland  
 \*Noise levels predicted at receptor meet or exceed the NAAC under some conditions. See Table 7 of the Noise Study Technical Memorandum for predicted peak hour noise levels.

- Noise Receptor\*
- Noise monitoring locations
- Future Design Centerline
- Noise Report Study Area
- Cover



**I-5 ROSE QUARTER NOISE STUDY**

**FUTURE (2045) BUILD ALTERNATIVE**

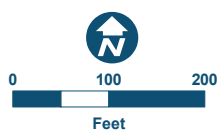
FIGURE 11.5



**I-5 ROSE QUARTER IMPROVEMENT PROJECT**

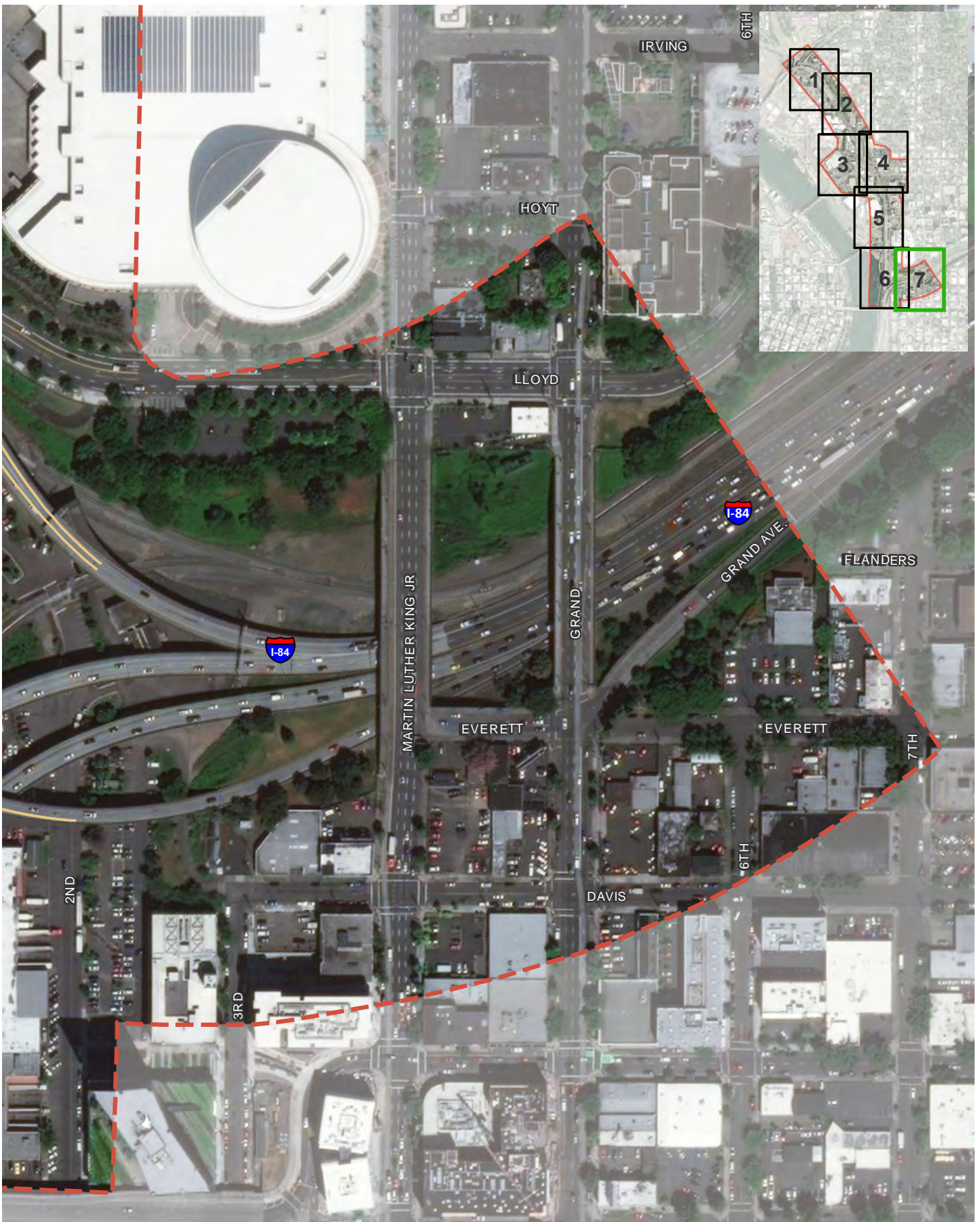
Data Source: Project Features - HDR; Basemap - ODOT, ESRI; Zoning - City of Portland  
 \* Noise levels predicted at receptor meet or exceed the NAAC under some conditions. See Table 7 of the Noise Study Technical Memorandum for predicted peak hour noise levels.

- Noise Receptor\*
- Noise monitoring locations
- Future Design Centerline
- Noise Report Study Area
- Cover



**I-5 ROSE QUARTER NOISE STUDY**  
**FUTURE (2045) BUILD ALTERNATIVE**

FIGURE 11.6



**I-5 ROSE QUARTER IMPROVEMENT PROJECT**  
 Data Source: Project Features - HDR; Basemap - ODOT, ESRI; Zoning - City of Portland  
 \* Noise levels predicted at receptor meet or exceed the NAAC under some conditions. See Table 7 of the Noise Study Technical Memorandum for predicted peak hour noise levels.

- Noise Receptor\*
- Noise monitoring locations
- Future Design Centerline
- Noise Report Study Area
- Cover



**I-5 ROSE QUARTER NOISE STUDY**  
**FUTURE (2045) BUILD ALTERNATIVE**

FIGURE 11.7