

HISTORIC ALBINA ADVISORY BOARD

MEETING 26

June 27, 2023



WELCOME!



This meeting includes live captioning.



Please mute when you are not speaking.



When calling in by phone, mute your computer speakers to prevent feedback.



Experiencing technical difficulties? Call or text 503-479-8674.

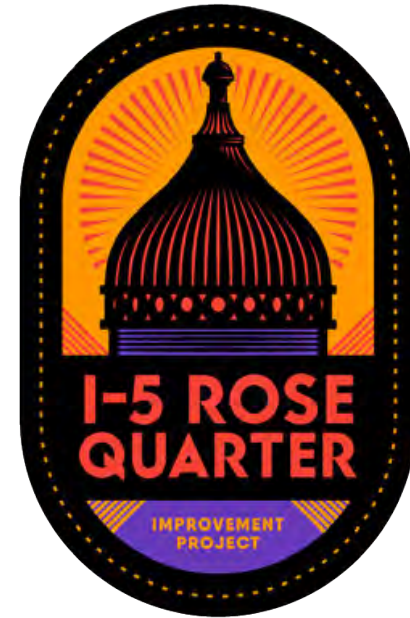
AGENDA

- ▶ Principles of Agreement
- ▶ Welcome New Members
- ▶ Albina Vision Trust Presentation
- ▶ Public Comments
- ▶ Project Updates
- ▶ HAAB Revised Charter Adoption
- ▶ Next Steps

7 PRINCIPLES OF AGREEMENT

1. Your voice matters
2. Be authentic and genuine
3. Listen for understanding
4. Deal with issues, not with people
5. Experience discomfort
6. Remain respectfully engaged
7. Expect & accept non-closure

**WELCOME, NEW
BOARD MEMBERS!**



ALBINA VISION TRUST PRESENTATION



A new neighborhood for living, learning, playing, and growing amongst nature and open space.



ALBINA VISION TRUST

100 Years of Community Vision for
Albina, Portland, Oregon

ALBINA GARDENS

ALBINA TODAY

Portland School District

Veterans Memorial Coliseum

Moda Center

Lloyd District

Oregon Convention Center

Broadway Bridge

Willamette River

Albina is now home to civic facilities, sports arenas, and impervious parking infrastructure to support large events.



LOWER ALBINA - THE BLUEPRINT



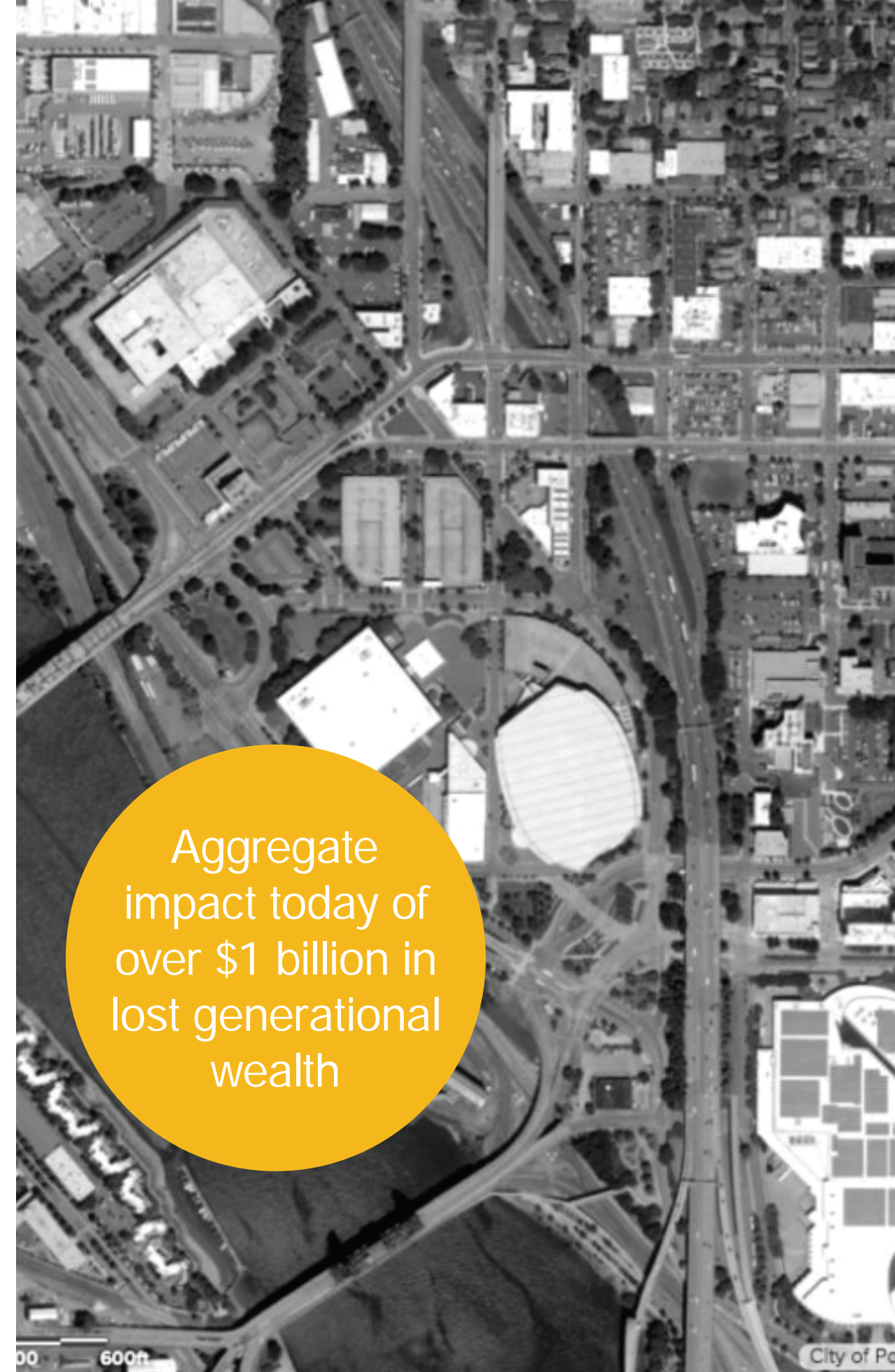
1948



1962



2023



7 DECADES OF URBAN INJUSTICE



1949 CONSTRUCTION BEGINS ON INTERSTATE AVE



1952 INTERSTATE AVE AND JUNCTIONS COMPLETED



1958 SITE CLEARED FOR MEMORIAL COLISEUM



1958 SITE AREA REGRADED



1969 AERIAL VIEW OF MEMORIAL COLISEUM



1964 FREEWAY CONSTRUCTION

WEALTH BUILDING



1948 Broadway Bridge during the Vanport Flood



LOSS OF
800+
HOMES

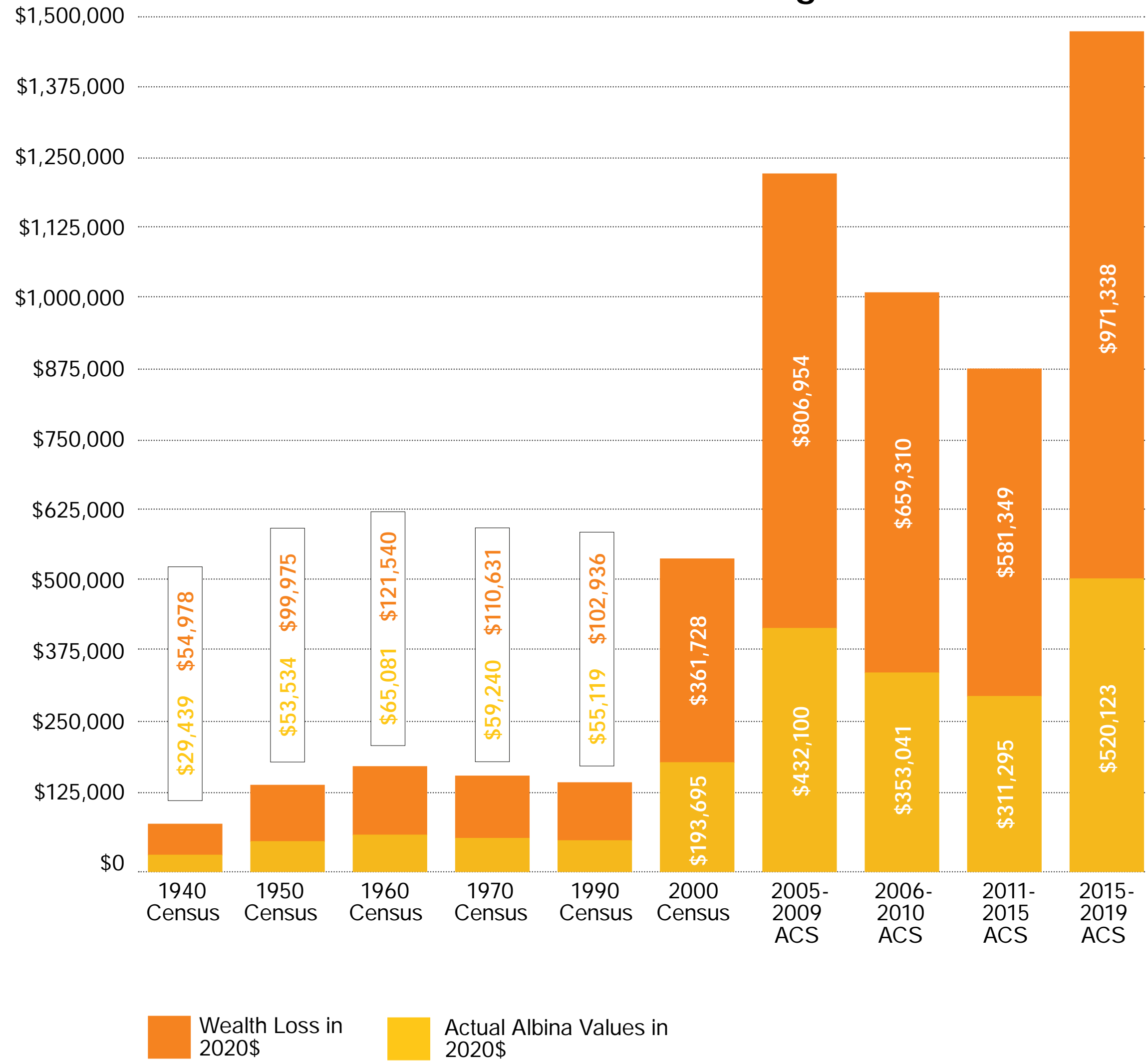
1958 Site area regraded

Fewer ownership opportunities.

Homes did not appreciate at the same rate.

Aggregate Impact today of approximately \$1 Billion in wealth lost.

What if Albina looked like Irvington?



COMMUNITY ENGAGEMENT HOSTS

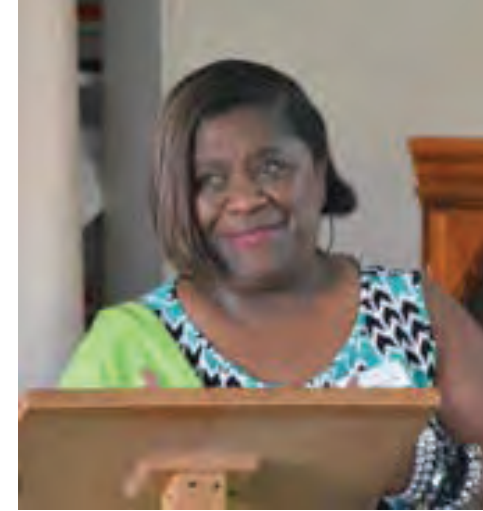
A variety of Community Hosts and other leaders help craft workshop content, provide guidance, and facilitate conversations.



cameron whitten | activist



Bobby Foucher | artist



Sharon Gary-Smith |
President of the Portland
NAACP Branch 1120-B



Emmanuel Williams | Host
of Sox and Sandals Podcast



Kayin Talton Davis | Owner
Soapbox Theory, LLC



Cleo Davis | Owner
Soapbox Theory, LLC



Andre Middleton | Friends
of Noise



Noni Causey | Founder,
BEAM Village



Shaina Pomeranz | OR
Bureau of Labor & Industries



Donna Maxey | Founder,
RACE TALKS



Donovan Smith | Ignorant
Reflections



Wavy Josef | Wavvy Boys



Mashavu Hicks |
Entertainment and Lifestyle
Host



Stephen Green | Startup
Advisor



Juston Gaddis | Filmmaker



Dru Holley | Filmmaker



Elijah Hassan | Artist and
Filmmaker



S. Renee Mitchell | I Am
M.O.R.E



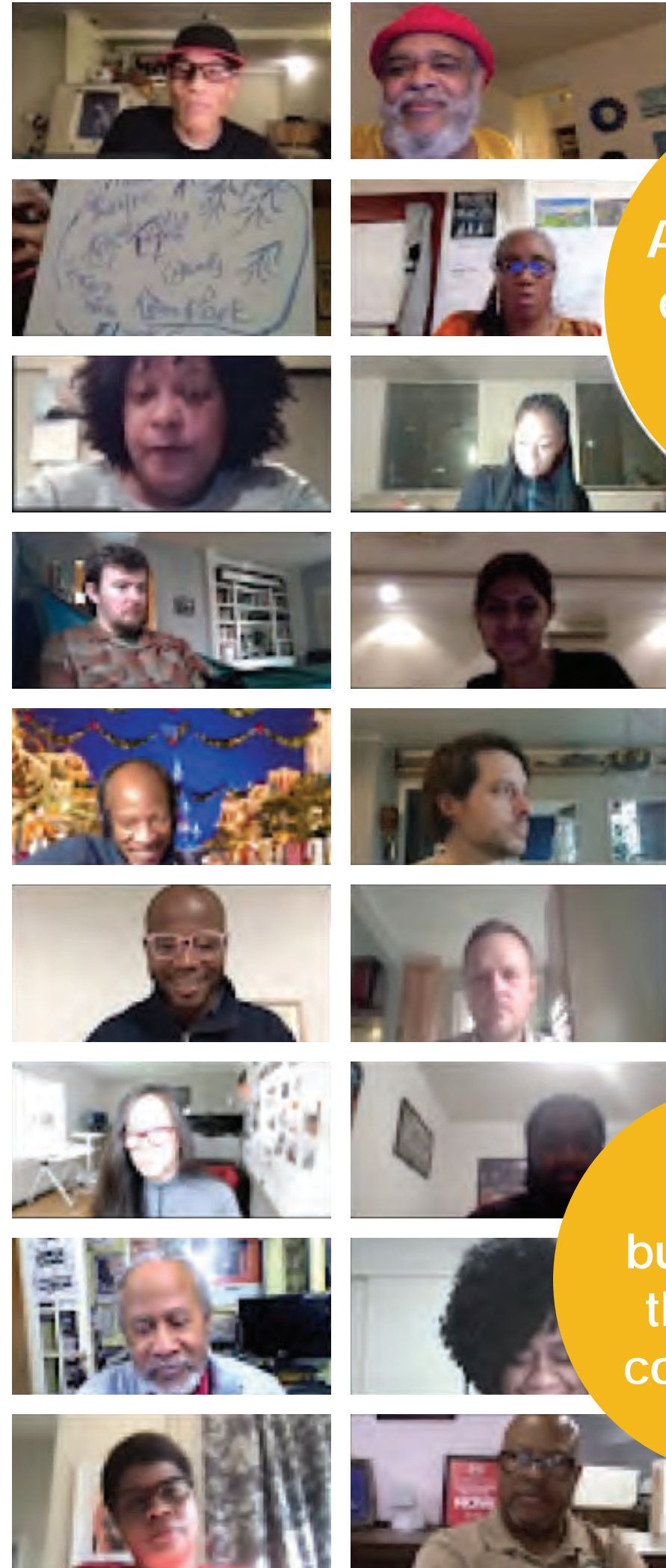
Rashad Floyd | Hustle and
Heart Productions



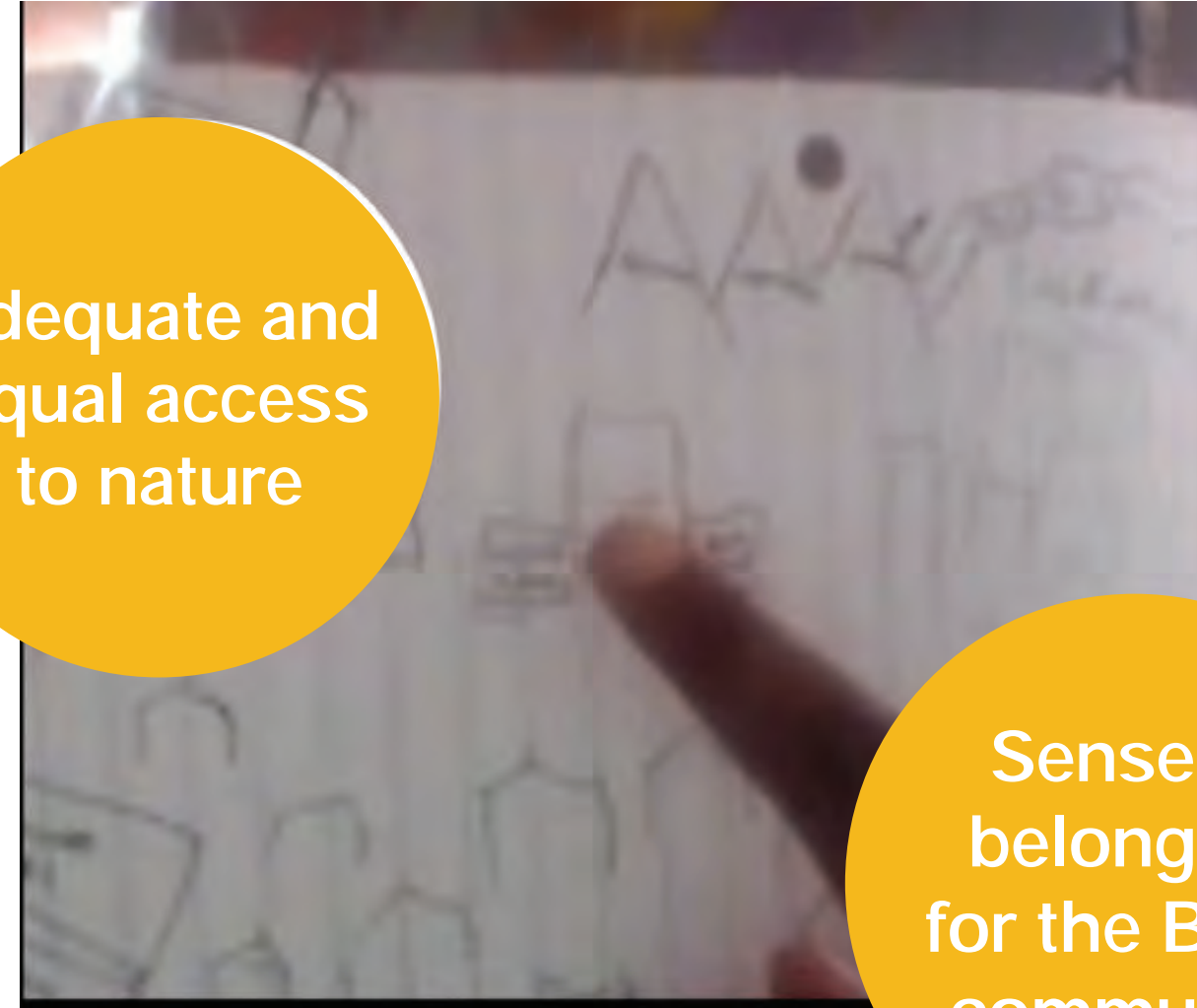
COMMUNITY CONNECTIONS



WHAT WE HEARD



Adequate and equal access to nature

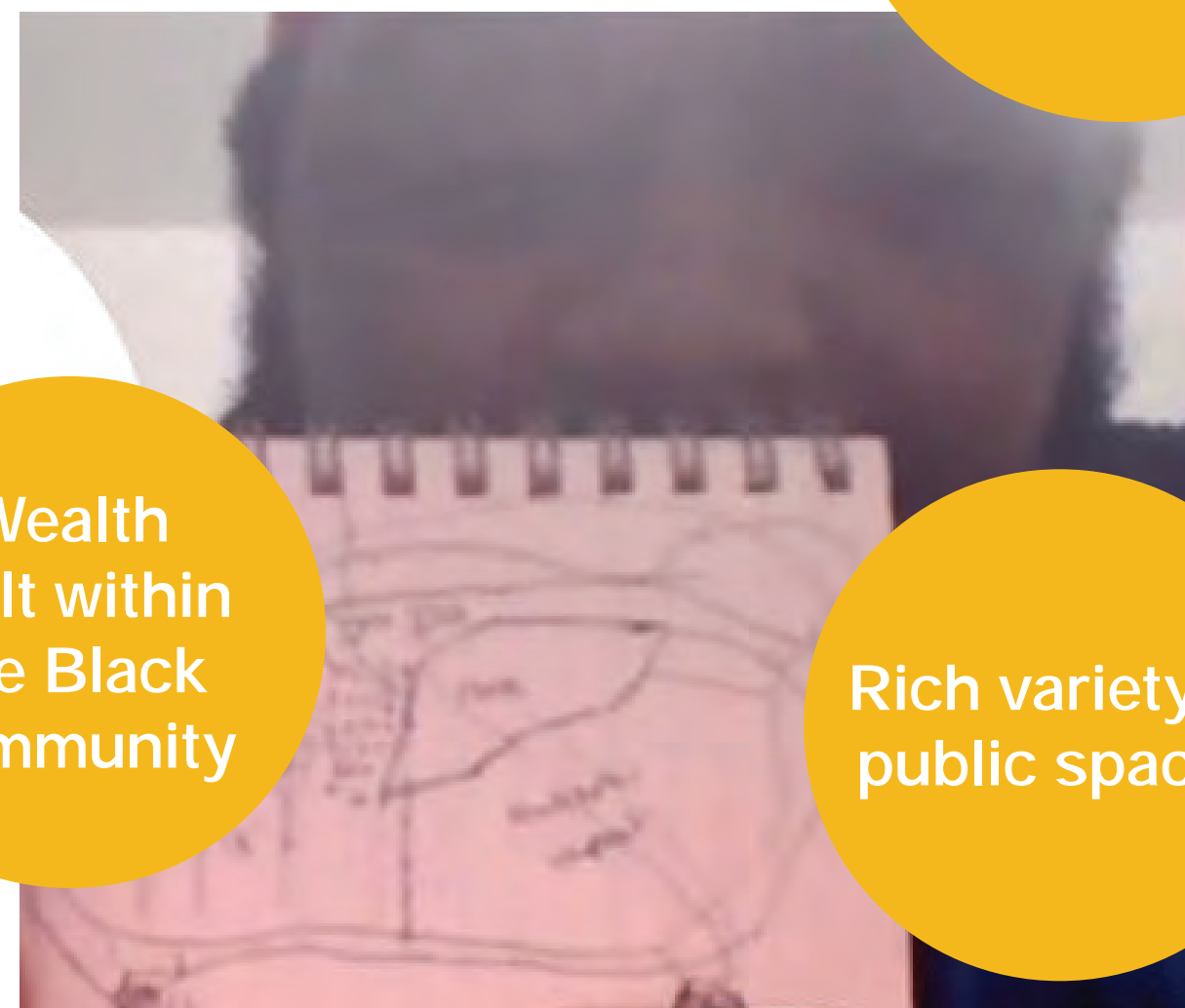


Sense of belonging for the Black community



Shared social support

Wealth built within the Black community



Rich variety of public spaces



A RICH VARIETY OF PLACES

What we heard...

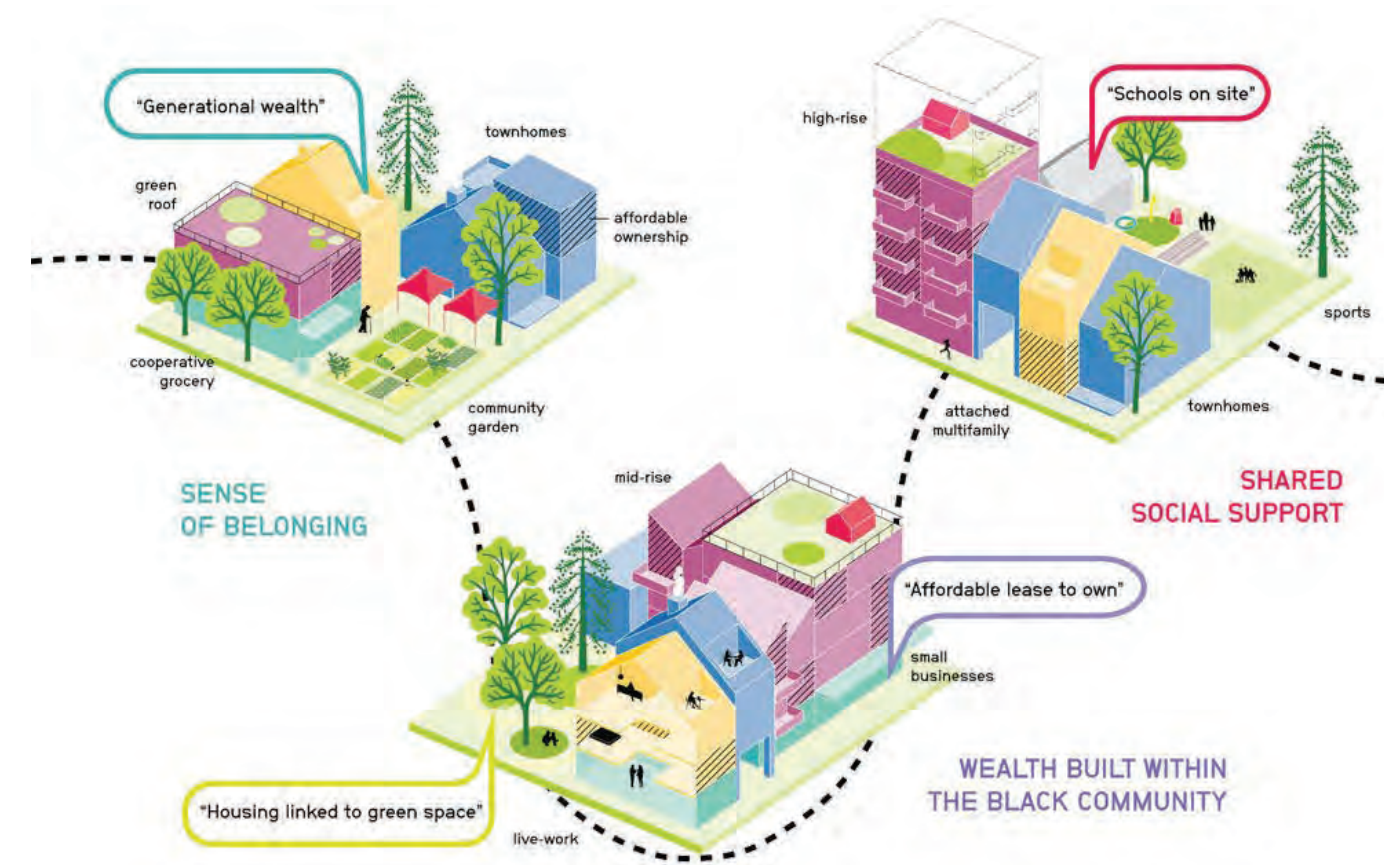
Adequate and equal access to nature

Sense of belonging for the Black community

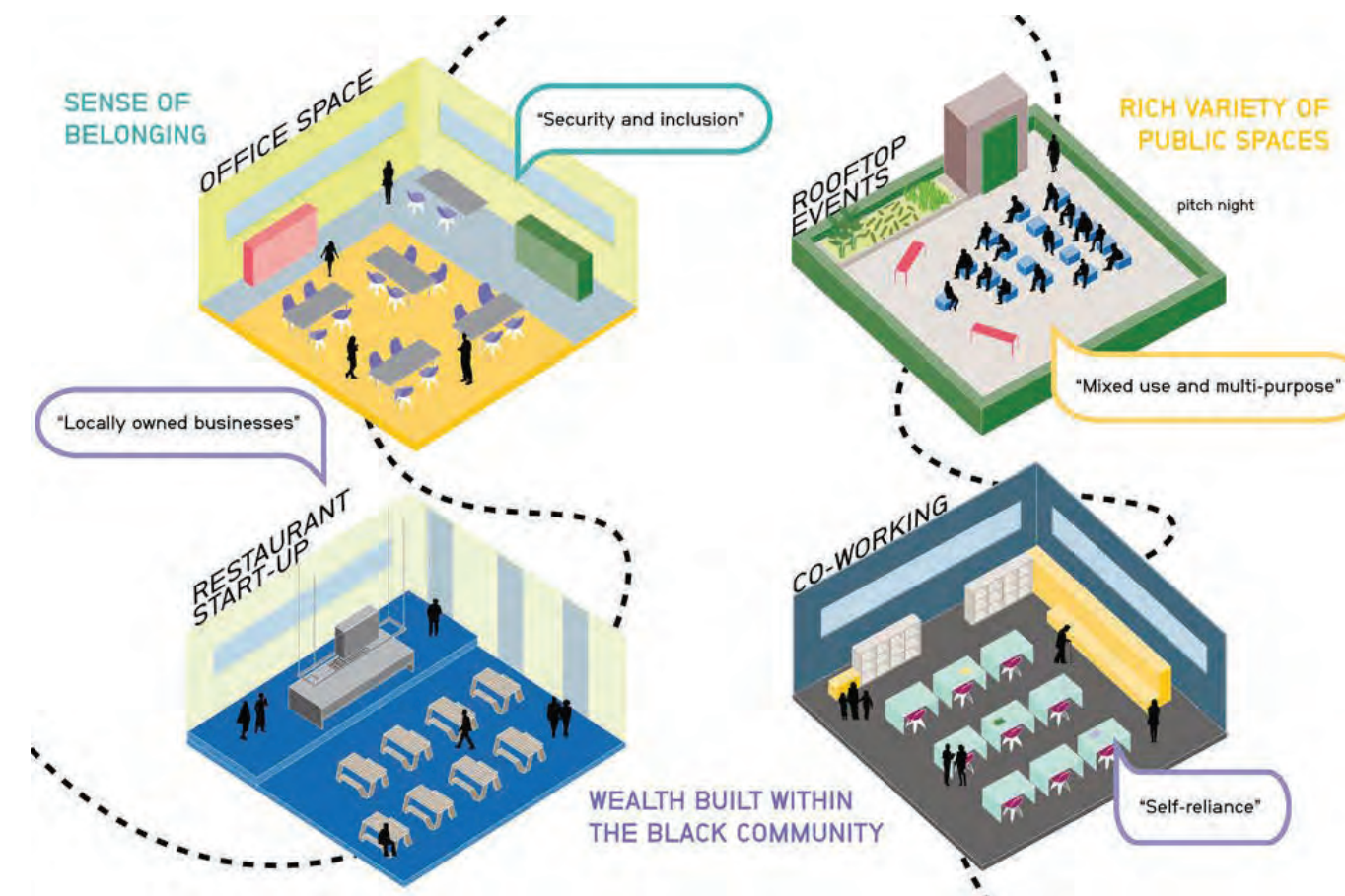
Wealth built within the Black community

Rich variety of public spaces

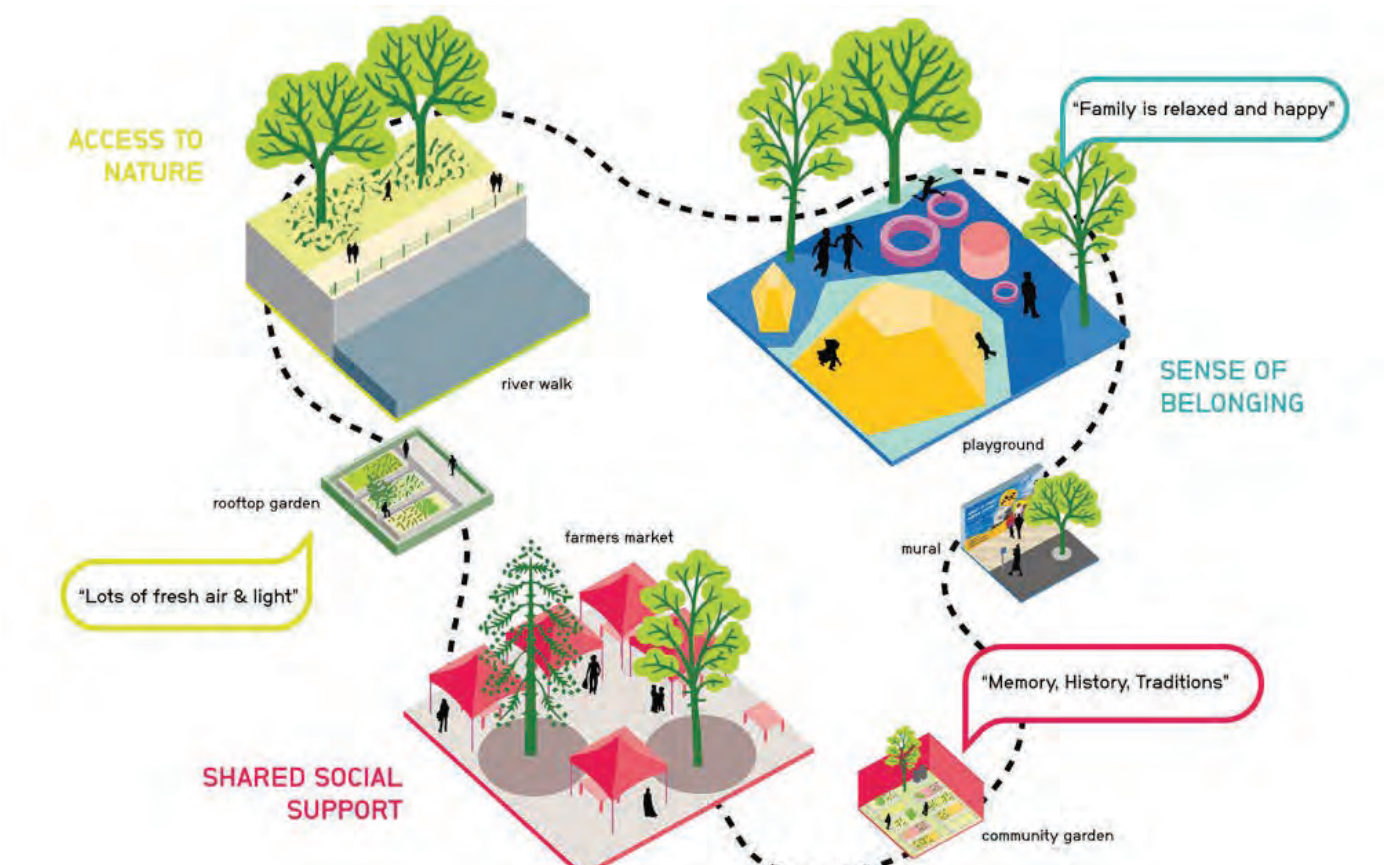
Shared social support



Housing



Commercial / Entrepreneurial

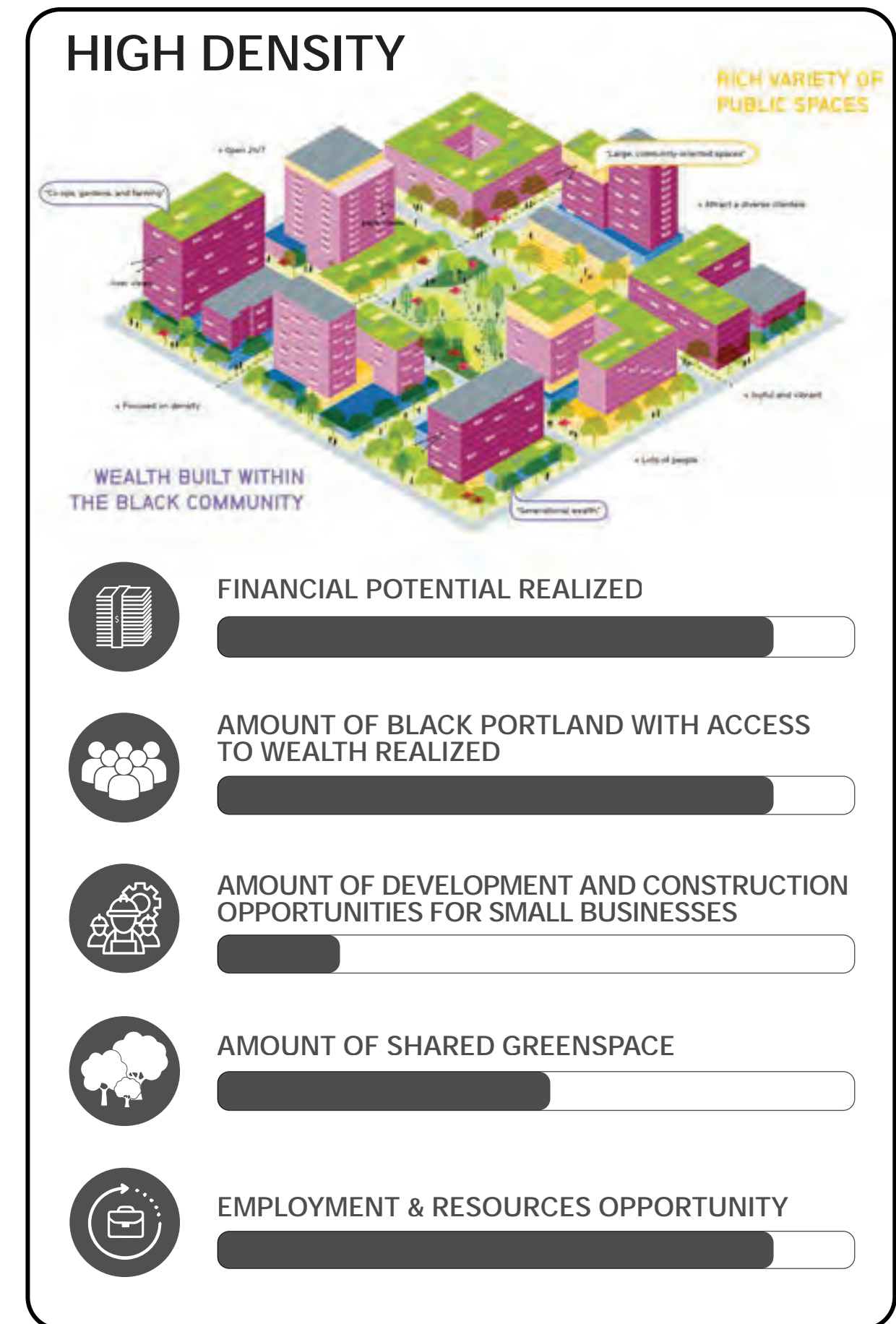
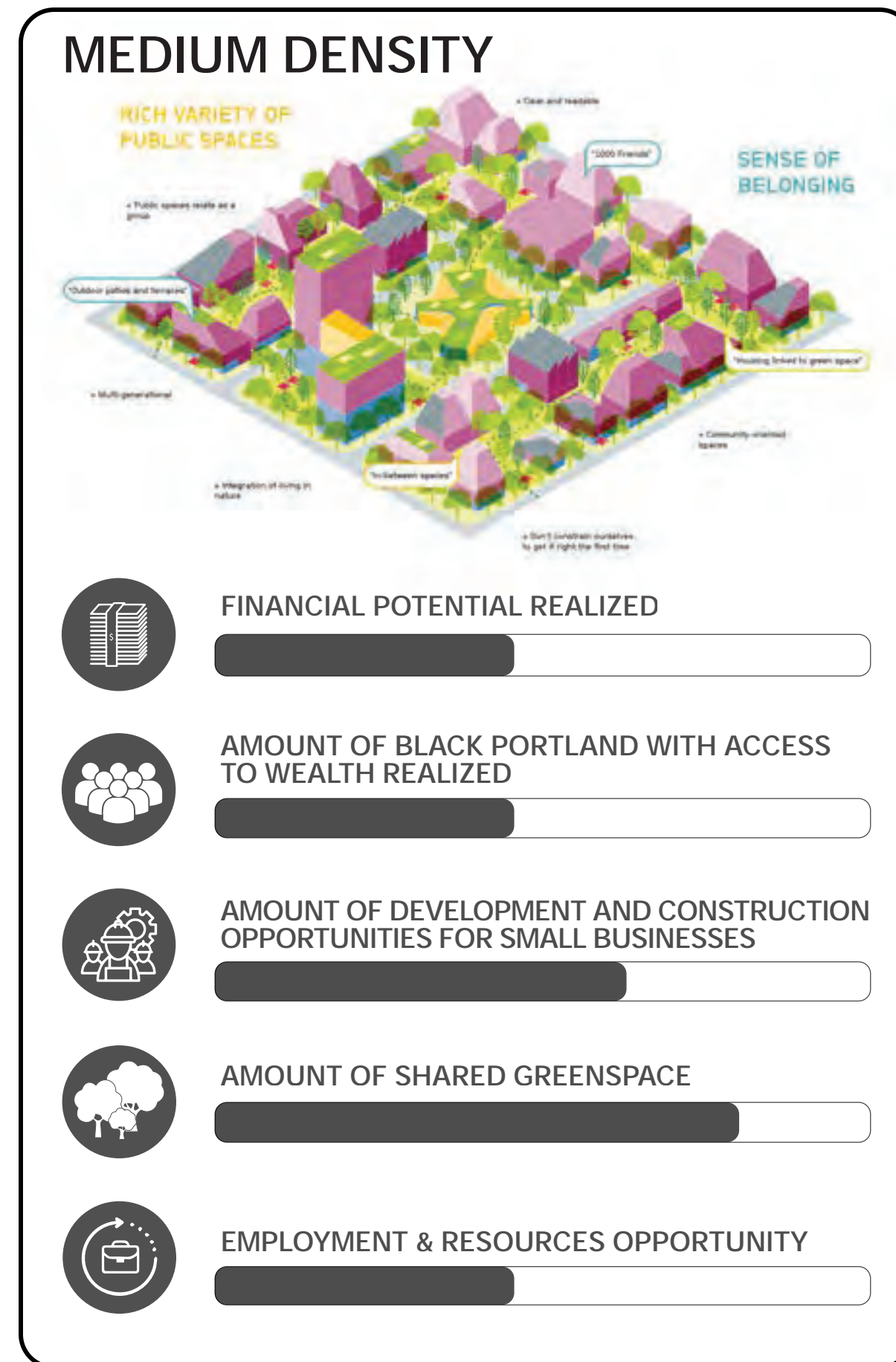
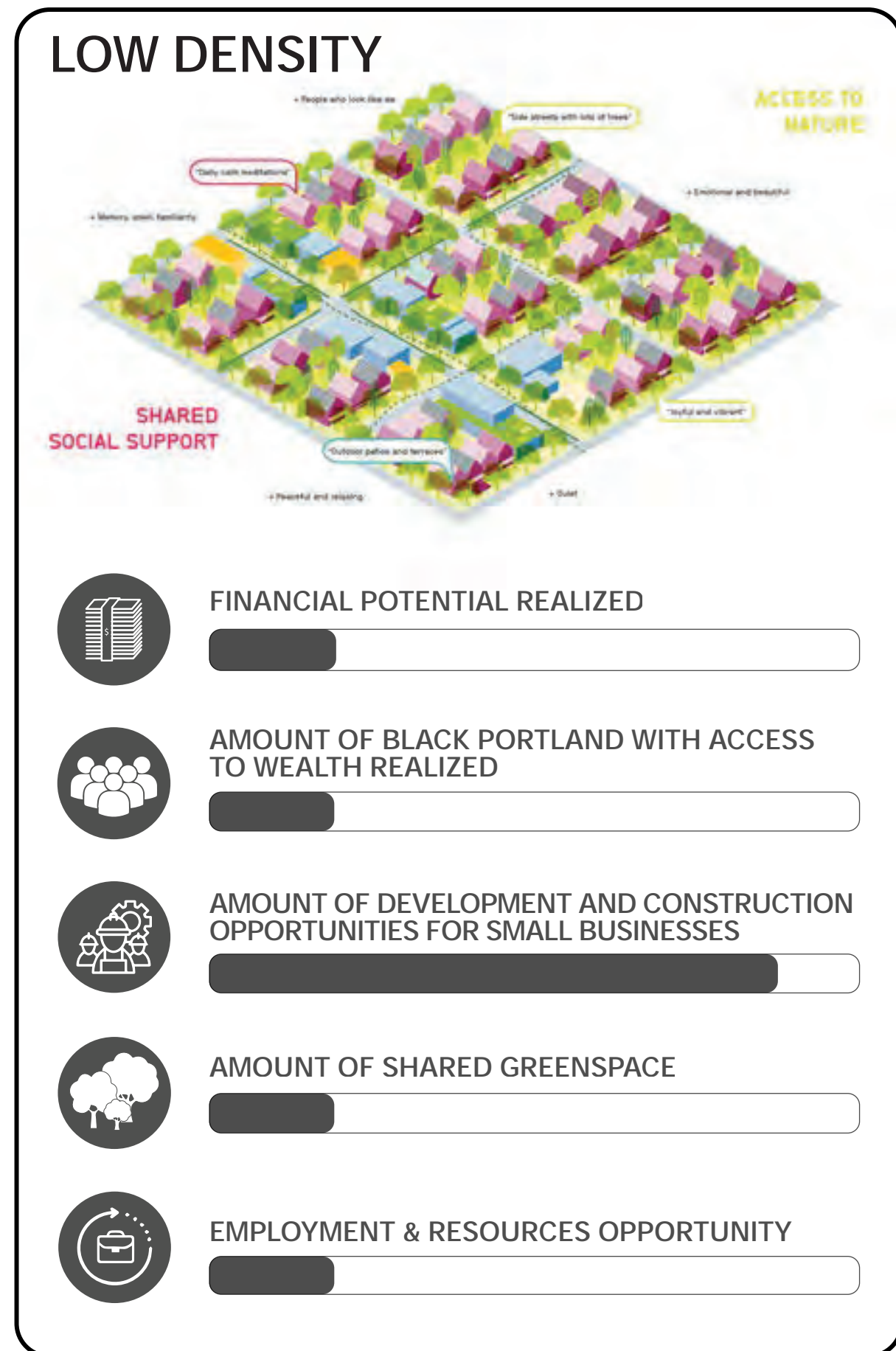


Public Spaces



Community Hubs

DENSITY STUDIES THROUGH THE LENS OF WEALTH CREATION FOR BLACK PORTLANDERS



Residential Typologies
 Commercial Typologies
 HUB Typologies



ALBINA VISION TRUST COMMUNITY INVESTMENT PLAN



Close-Knit Neighborhood

Education / Entrepreneur Hub

Albina Market

Albina Gardens

Food Hub

Arts Hub

Waterfront Park

Legend:

- Various Housing
- Commercial / Entrepreneur
- Public Spaces & Nat
- HUB(s)



A NETWORK OF COMMUNITY HUBS



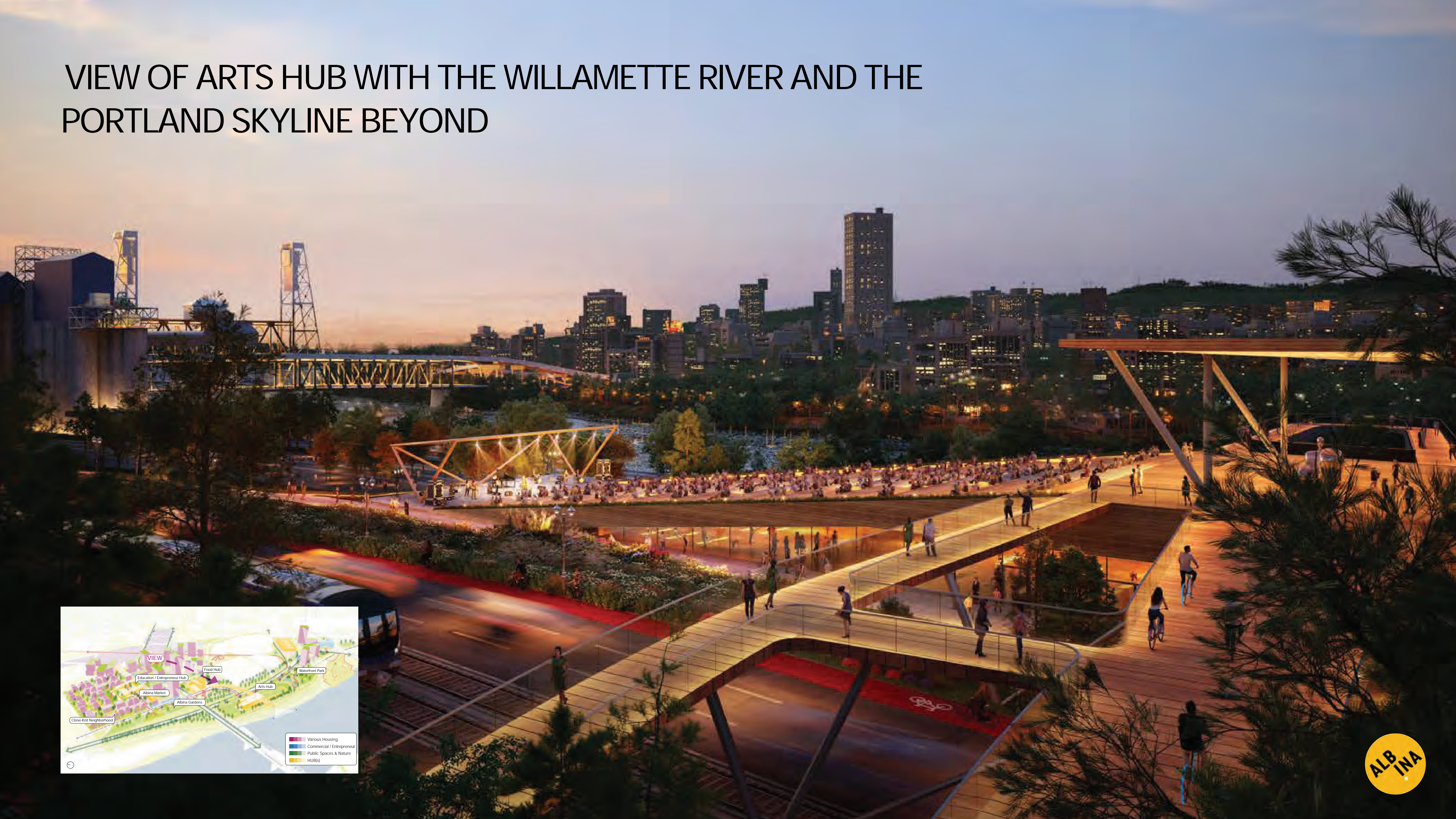
A CLOSE-KNIT NEIGHBORHOOD



WATERFRONT PARK



VIEW OF ARTS HUB WITH THE WILLAMETTE RIVER AND THE PORTLAND SKYLINE BEYOND



WEALTH BUILDING STORIES



DARIUS



MR. WILLIAMS



NICHELE



ROCKY



TONY



ZAWADI



THE JOHNSONS



KYETA



THE TURNERS



MS. YVONNE

ALBINA VISION TRUST COMMUNITY INVESTMENT PLAN



Close-Knit Neighborhood

Education / Entrepreneur Hub

Albina Market

Albina Gardens

Food Hub

Arts Hub

Waterfront Park

- Various Housing
- Commercial / Entrepreneur
- Public Spaces & Nat
- HUB(s)



THANK YOU!



PUBLIC COMMENT

- ▶ Focus comments on today's meeting topics
- ▶ Speakers have up to 2 minutes to comment
- ▶ To provide more extensive comments reference page 1 of your agenda

To provide comments

CALL: 971-247-1195

MEETING ID: 869 3533 4143

PASSCODE: 445546

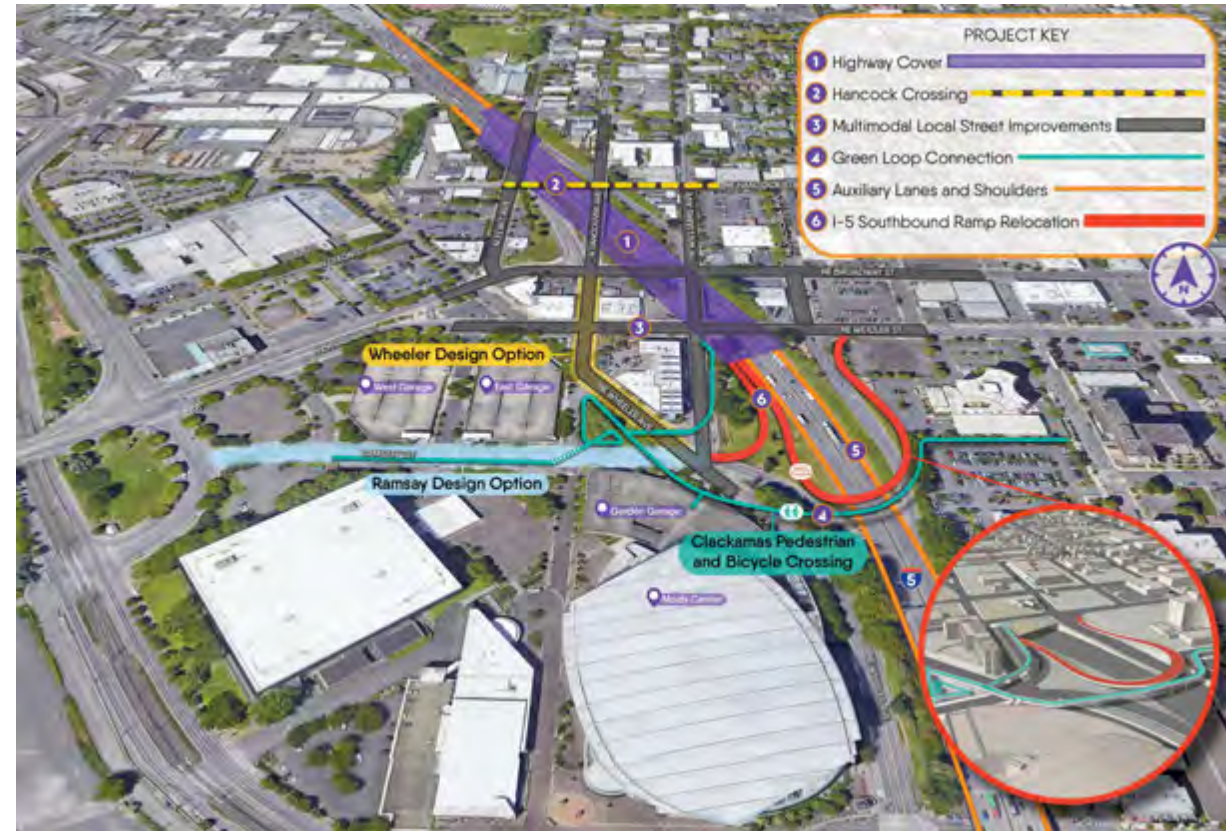
1. Dial *9 to raise your hand
2. After you are invited to speak, dial *6 to unmute

PROJECT UPDATES



DIRECTOR UPDATE: DESIGN REFINEMENTS

- ▶ Reintegration of separated bicycle and pedestrian bridge
- ▶ I-5 southbound ramp flyover structure
 - » Separates eastbound and westbound ramp traffic
- ▶ I-5 southbound ramp connection with local streets
 - » Two options (Wheeler and Ramsay)



DESIGN REFINEMENTS: RESPONSIVE TO PUBLIC COMMENTS

Better Pedestrian and Bicycle Safety

- ▶ 2/3 of southbound off-ramp traffic expected to take flyover
 - » Drawing traffic away from Moda Center and other intersections on Vancouver and Williams
- ▶ Provides new east/west bicycle and pedestrian bridge over I-5
 - » Facilitating the City's Green Loop
- ▶ Adds safer pedestrian and bicycle crossings
 - » Less crossing distances at multiple intersections

Maintains Event Access

- ▶ Maintains similar Moda Center access

Connected Community Redevelopment

- ▶ Preserves on and off highway cover developable space
- ▶ Maintains walkability of Broadway / Weidler

DESIGN REFINEMENTS: NEXT STEPS

- ▶ Update Supplemental Environmental Assessment technical analysis
- ▶ Federal Highway Administration environmental decision document
 - » Anticipated by early 2024

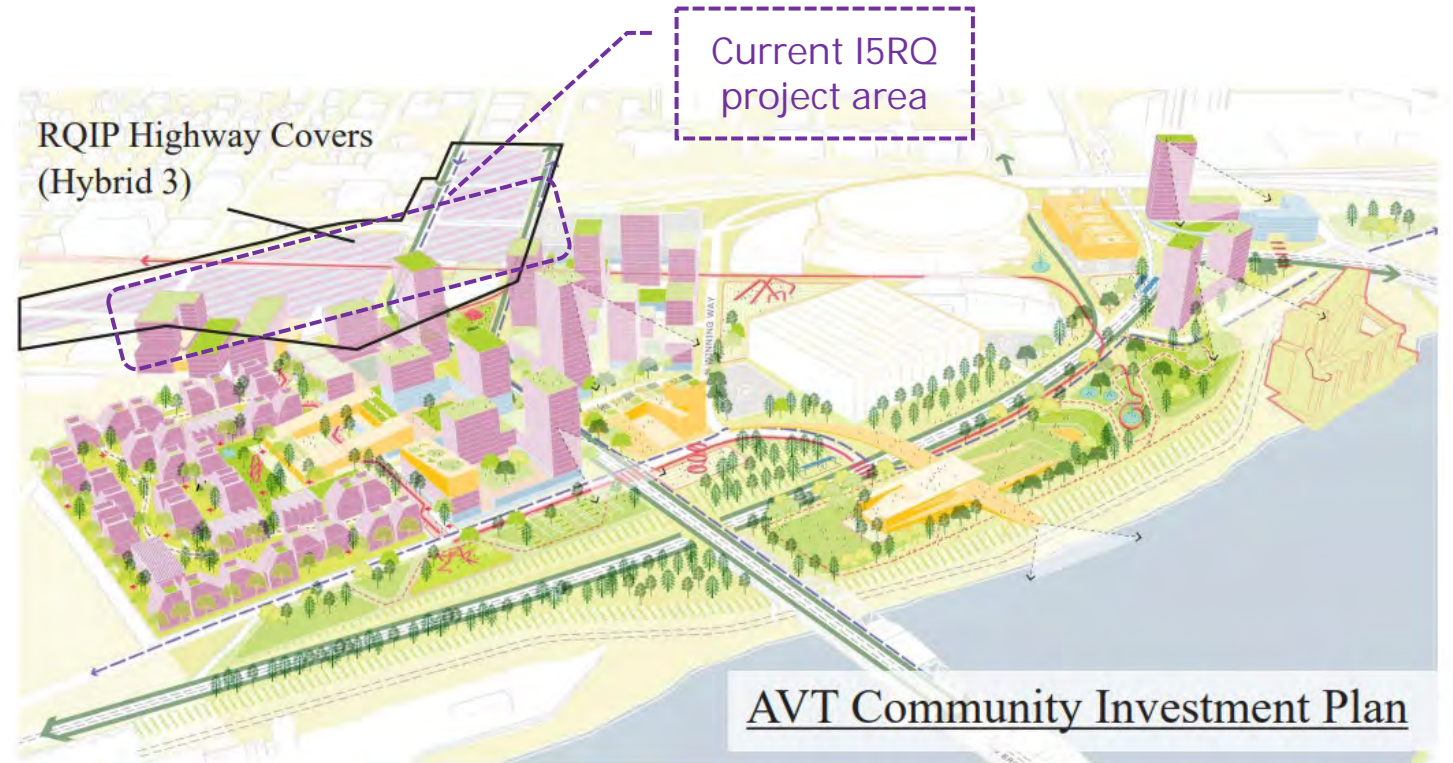
CITY OF PORTLAND UPDATE: RECONNECTING COMMUNITIES GRANT

- ▶ City Team (PBOT, BPS, Prosper) are currently refining the scope of work to clarify roles, responsibilities, and intended outcomes for the Reconnecting Communities Pilot Program (RCPP)
- ▶ At a high-level, key elements of the RCPP work will include:
 - » Community Participation Plan
 - » Street Framework Plan
 - » Land Use & Development Strategy
 - » Public Realm and Activation Strategy
 - » Governance Framework
- ▶ Once an agreed-upon scope of work is completed, we will prepare to receive federal grant funds later this summer

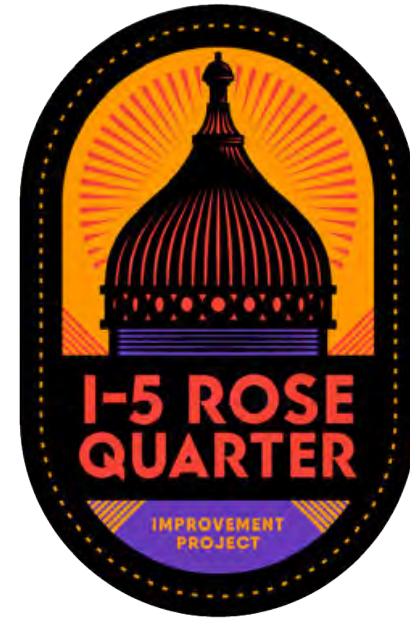


CITY OF PORTLAND UPDATE: RECONNECTING COMMUNITIES PILOT PROGRAM

- ▶ The RCPP and I-5 Rose Quarter Project are fully integrated and symbiotic planning efforts.
- ▶ We see the HAAB as a key stakeholder in the RCPP work, which attends to the broader Albina Vision Community Investment Plan area.
- ▶ We will be engaging regularly with this body to provide updates and gather input throughout the process.



QUESTIONS & ANSWERS



HAAB REVISED CHARTER ADOPTION



HAAB REVISED CHARTER

- ▶ Are there any comments or questions?
- ▶ Discussion
- ▶ Vote

NEXT STEPS



THANK YOU!

Website: www.i5rosequarter.org

Email: i5rosequarter@odot.oregon.gov

Phone: 503-470-3127

