

Appendix R. 20% Design Alternatives

This page is intentionally left blank.

NE MARTIN LUTHER KING JR BLVD

NE 3RD AVE

NE BROADWAY

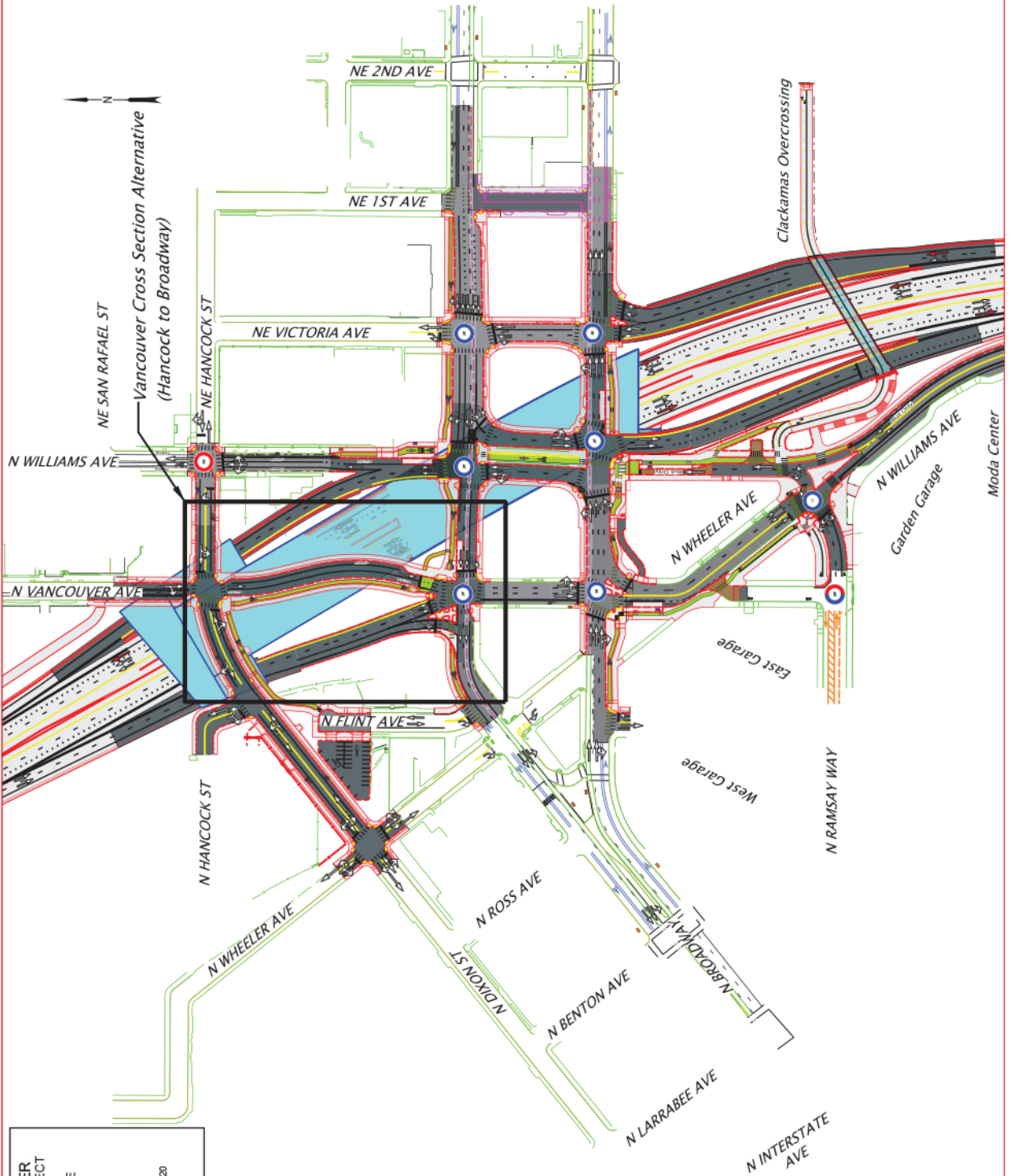
NE WEIDLER ST

NE CLACKAMAS ST

NE WASCO ST



Vancouver Cross Section Alternative
(Hancock to Broadway)



I-5: ROSE QUARTER
IMPROVEMENT PROJECT
DESIGN ALTERNATIVE
KEY MAP
PACIFIC HIGHWAY
MULTI-NOAH COUNTY
20% DESIGN PACKAGE
Last updated: December 4, 2020
pg 1

**I-5: ROSE QUARTER
IMPROVEMENT PROJECT**

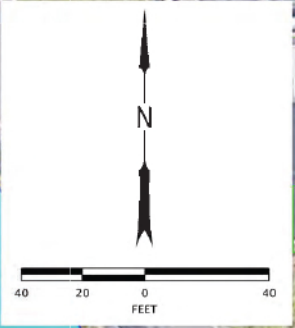
VANCOUVER CROSS SECTION
(HANCOCK TO BROADWAY):
BASE DESIGN
- ONE LANE VANCOUVER

PACIFIC HIGHWAY
MULTNOMAH COUNTY
20% DESIGN PACKAGE

Last updated: December 4, 2020

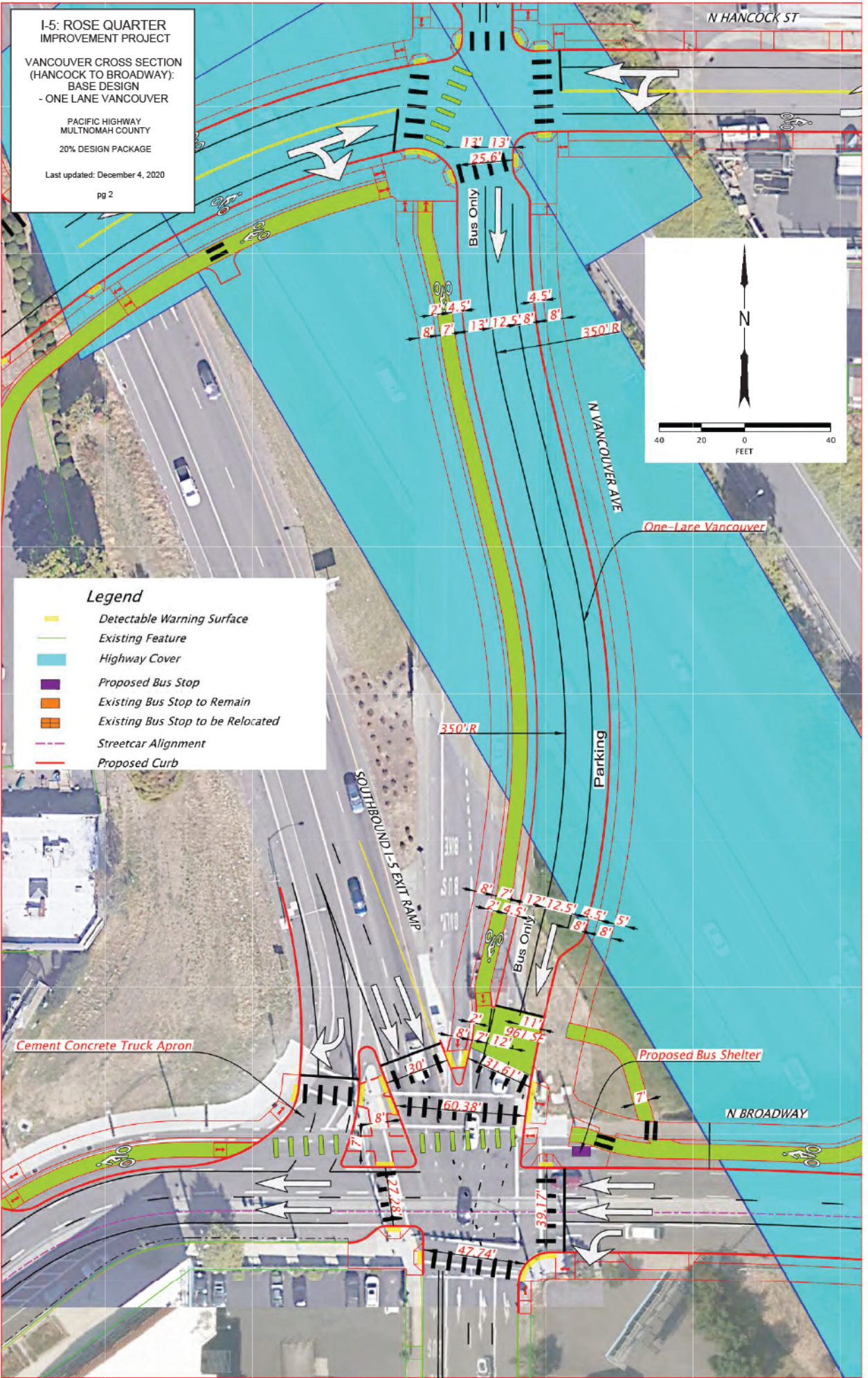
pg 2

N HANCOCK ST



Legend

- Detectable Warning Surface
- Existing Feature
- Highway Cover
- Proposed Bus Stop
- Existing Bus Stop to Remain
- Existing Bus Stop to be Relocated
- - - Streetcar Alignment
- Proposed Curb



Cement Concrete Truck Apron

Proposed Bus Shelter

N BROADWAY

Parking

N VANCOUVER AVE

One-Lane Vancouver

SOUTHBOUND I-5 EXISTING RAMP

Bus Only

Bus Only

350'R

350'R

47.74'

39.17'

31.61'

11'

2'

8'

7'

12'

2.5'

4.5'

5'

8'

8'

13'

12.5'

8'

7'

13'

25.6'

4.5'

13'

13'

8'

7'

8'

7'

8'

8'

I-5: ROSE QUARTER IMPROVEMENT PROJECT

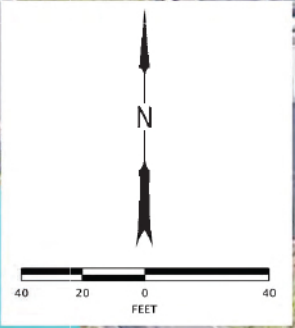
VANCOUVER CROSS SECTION
(HANCOCK TO BROADWAY):
ALTERNATIVE 1
- TWO LANE VANCOUVER

PACIFIC HIGHWAY
MULTNOMAH COUNTY
20% DESIGN PACKAGE

Last updated: December 4, 2020

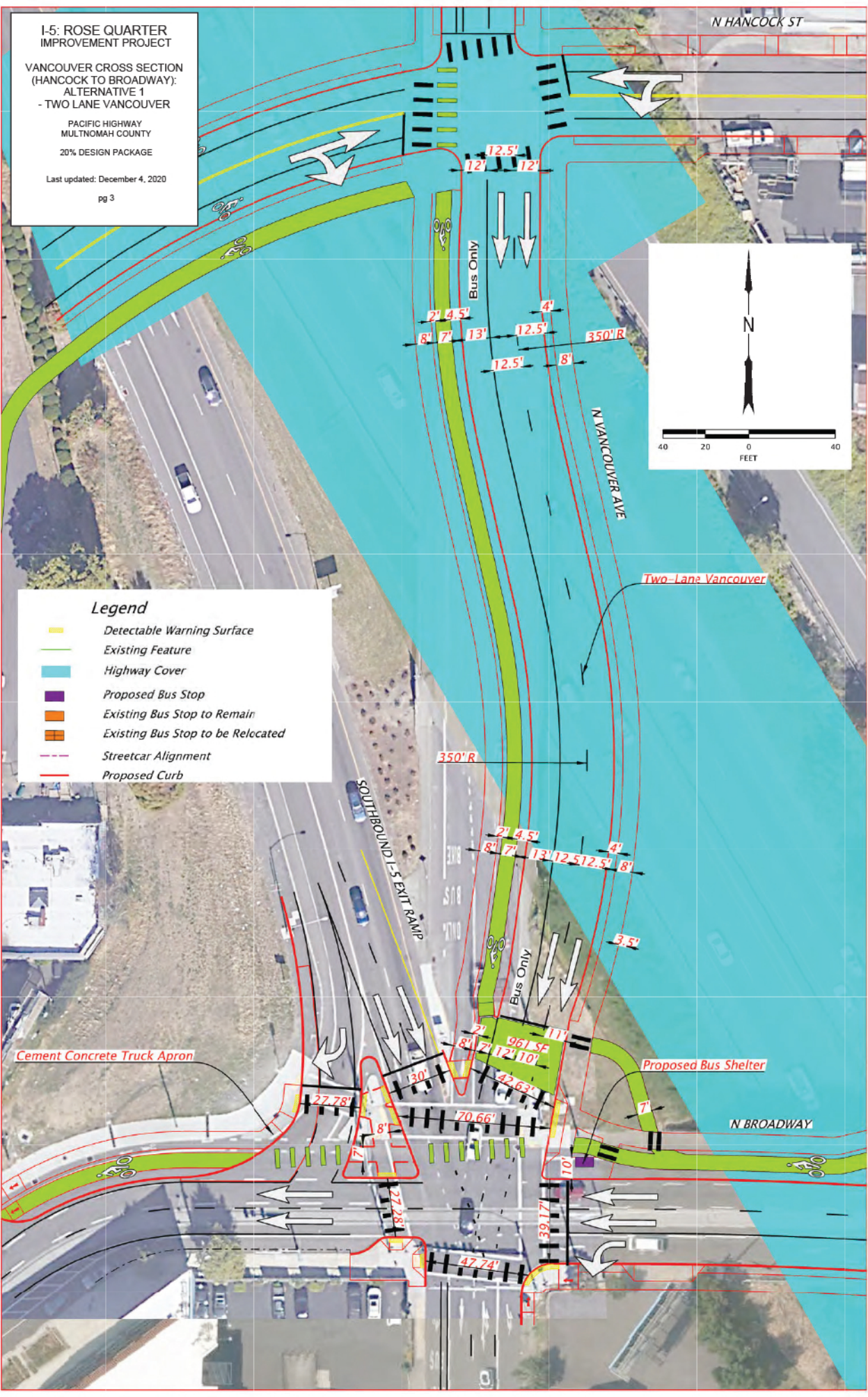
pg 3

N HANCOCK ST



Legend

- Detectable Warning Surface
- Existing Feature
- Highway Cover
- Proposed Bus Stop
- Existing Bus Stop to Remain
- Existing Bus Stop to be Relocated
- Streetcar Alignment
- Proposed Curb



Two-Lane Vancouver

350'R

350'R

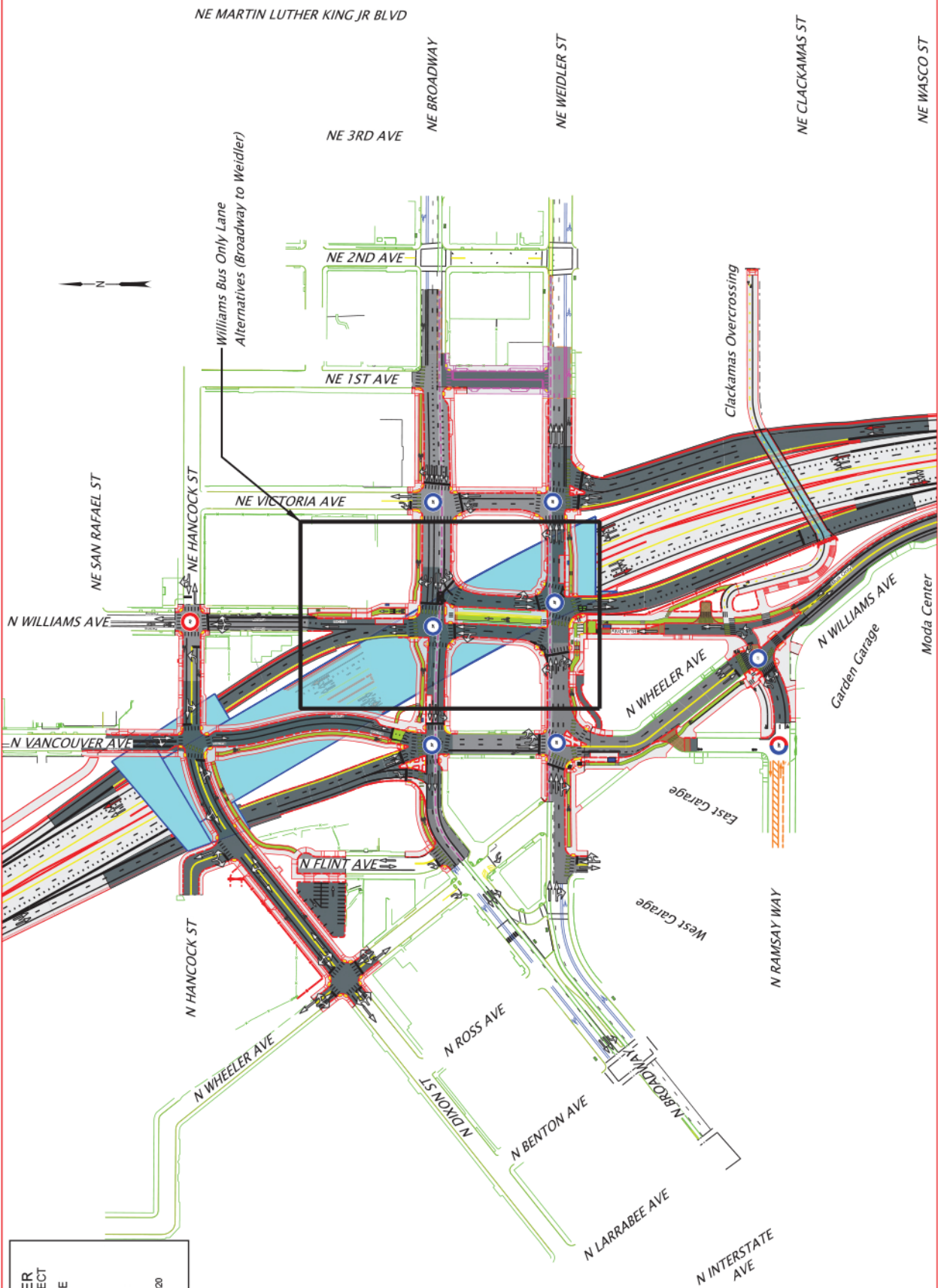
Cement Concrete Truck Apron

Proposed Bus Shelter

N BROADWAY

N VANCOUVER AVE

SOUTHBOUND I-5 EXIT RAMP



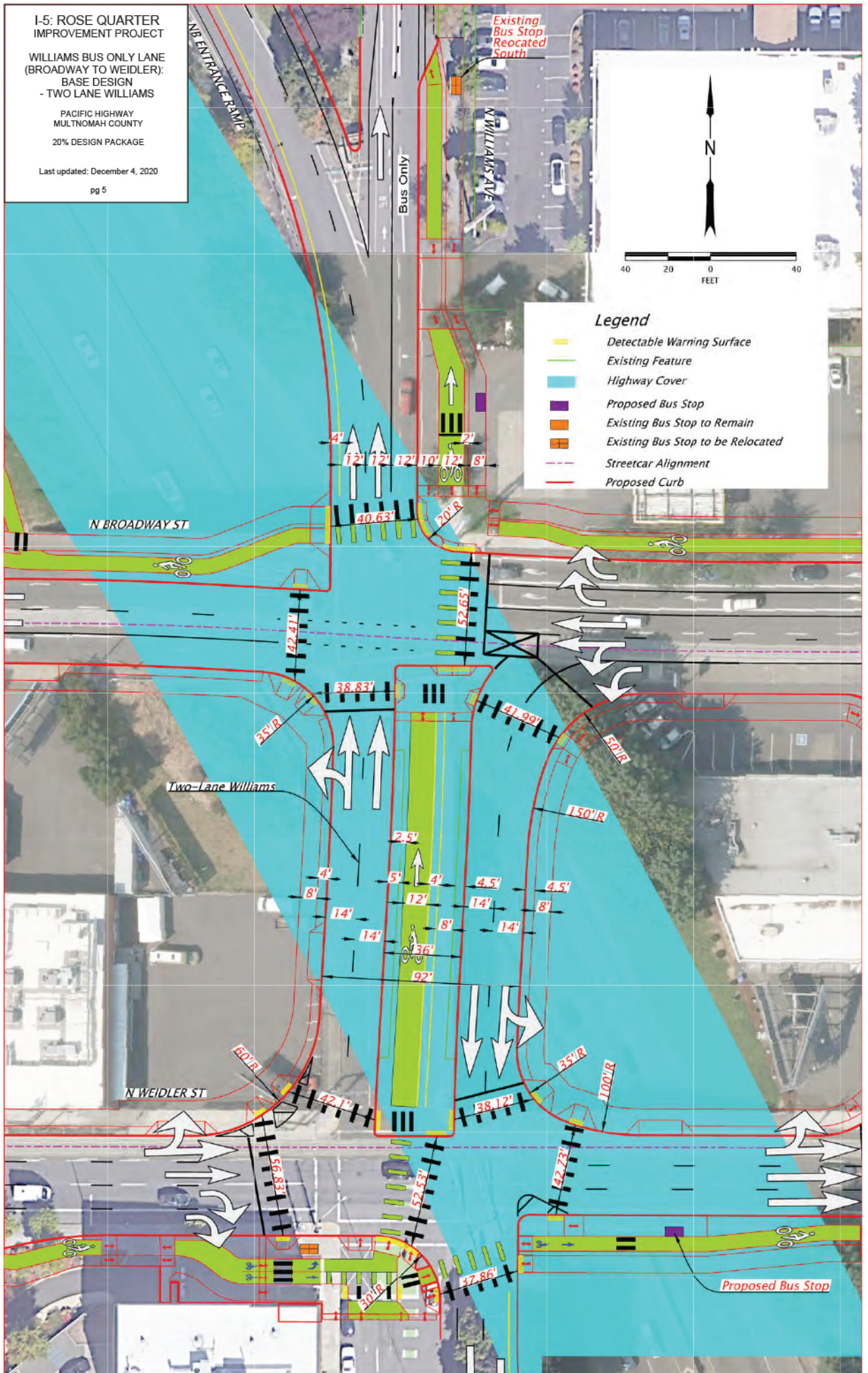
I-5: ROSE QUARTER
IMPROVEMENT PROJECT
DESIGN ALTERNATIVE
KEY MAP
 PACIFIC HIGHWAY
 MULTNOMAH COUNTY
 20% DESIGN PACKAGE
 Last updated: December 4, 2020
 pg 4

**I-5: ROSE QUARTER
IMPROVEMENT PROJECT**

**WILLIAMS BUS ONLY LANE
(BROADWAY TO WEIDLER):
BASE DESIGN
- TWO LANE WILLIAMS**

PACIFIC HIGHWAY
MULTNOMAH COUNTY
20% DESIGN PACKAGE

Last updated: December 4, 2020
pg 5



Legend

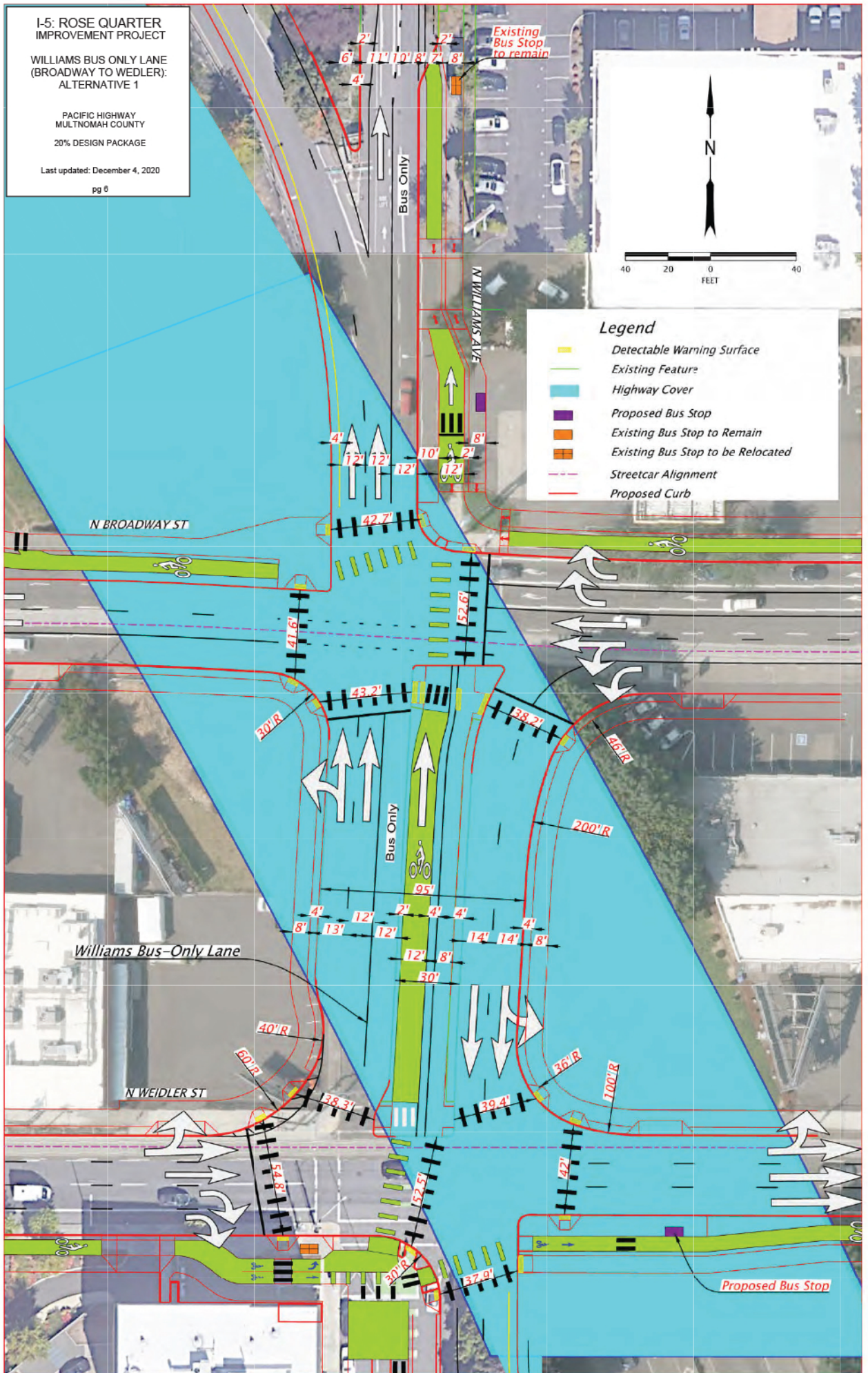
- Detectable Warning Surface
- Existing Feature
- Highway Cover
- Proposed Bus Stop
- Existing Bus Stop to Remain
- Existing Bus Stop to be Relocated
- - - Streetcar Alignment
- Proposed Curb

**I-5: ROSE QUARTER
IMPROVEMENT PROJECT**

**WILLIAMS BUS ONLY LANE
(BROADWAY TO WEDLER):
ALTERNATIVE 1**

PACIFIC HIGHWAY
MULTNOMAH COUNTY
20% DESIGN PACKAGE

Last updated: December 4, 2020
pg 6



Legend

- Detectable Warning Surface
- Existing Feature
- Highway Cover
- Proposed Bus Stop
- Existing Bus Stop to Remain
- Existing Bus Stop to be Relocated
- Streetcar Alignment
- Proposed Curb

N BROADWAY ST

Williams Bus-Only Lane

N WEDLER ST

Proposed Bus Stop



40 20 0 40
FEET

NE MARTIN LUTHER KING JR BLVD

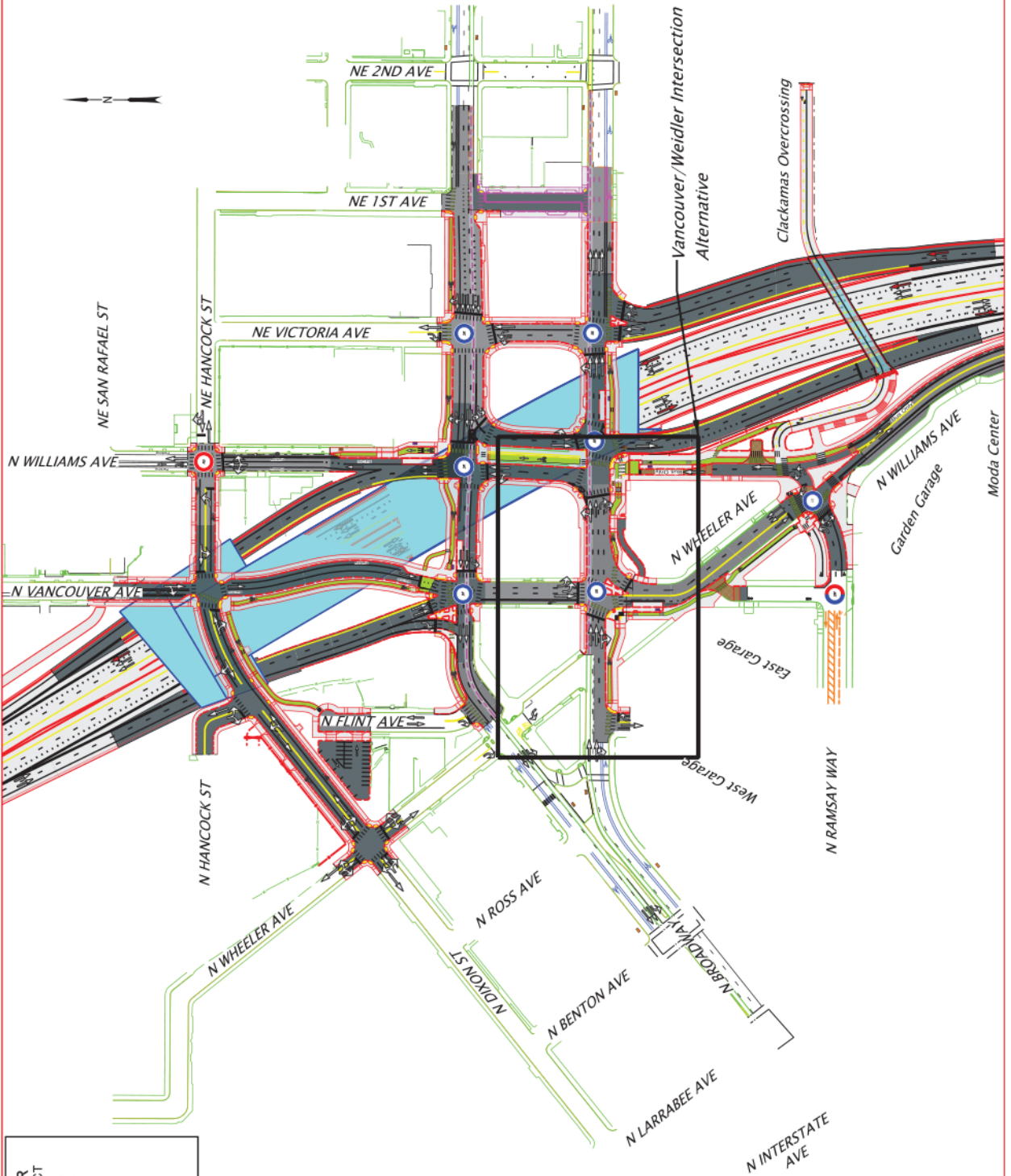
NE 3RD AVE

NE BROADWAY

NE WEIDLER ST

NE CLACKAMAS ST

NE WASCO ST

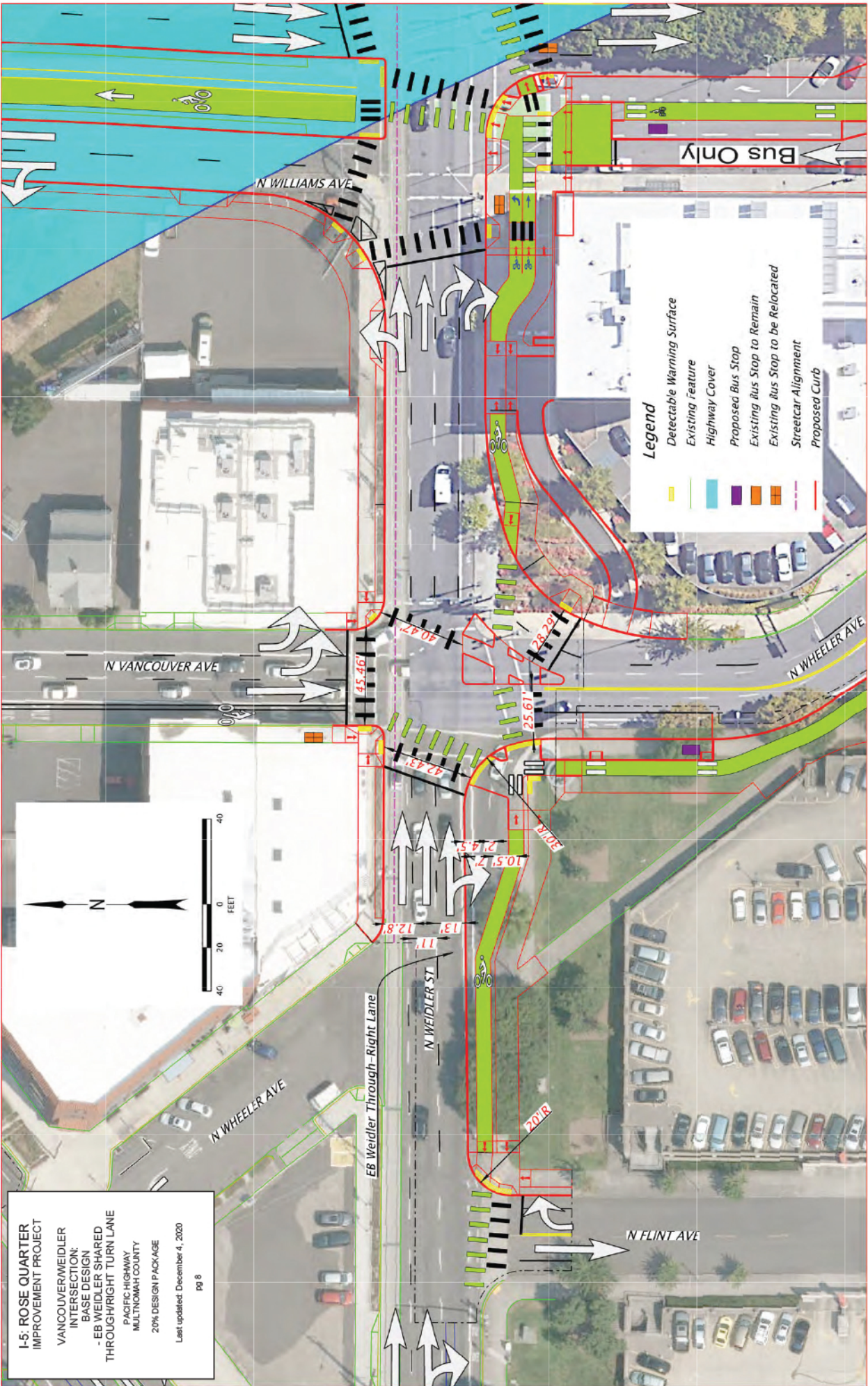


**I-5: ROSE QUARTER
IMPROVEMENT PROJECT
DESIGN ALTERNATIVE
KEY MAP**

PACIFIC HIGHWAY
MULTNOMAH COUNTY
20% DESIGN PACKAGE

Last updated: December 4, 2020

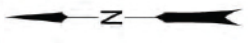
pg 7



Legend

- Detectable Warning Surface
- Existing Feature
- Highway Cover
- Proposed Bus Stop
- Existing Bus Stop to Remain
- Existing Bus Stop to be Relocated
- Streetcar Alignment
- Proposed Curb

I-5: ROSE QUARTER IMPROVEMENT PROJECT
 VANCOUVER/WEIDLER INTERSECTION:
 BASE DESIGN
 - EB WEIDLER SHARED THROUGH/RIGHT TURN LANE
 PACIFIC HIGHWAY MULTINOMAH COUNTY
 20% DESIGN PACKAGE
 Last updated: December 4, 2020
 PG 8



N WILLIAMS AVE

N VANCOUVER AVE

N WHEELER AVE

N WHEELER AVE

EB Weidler Through-Right Lane

N WEIDLER ST

N FLINT AVE

45.46'

42.43'

13'

12.8'

11'

10.5'

21.9.5'

40.42'

25.61'

20.0R

20.0R

20.0R

20.0R

20.0R

20.0R

20.0R

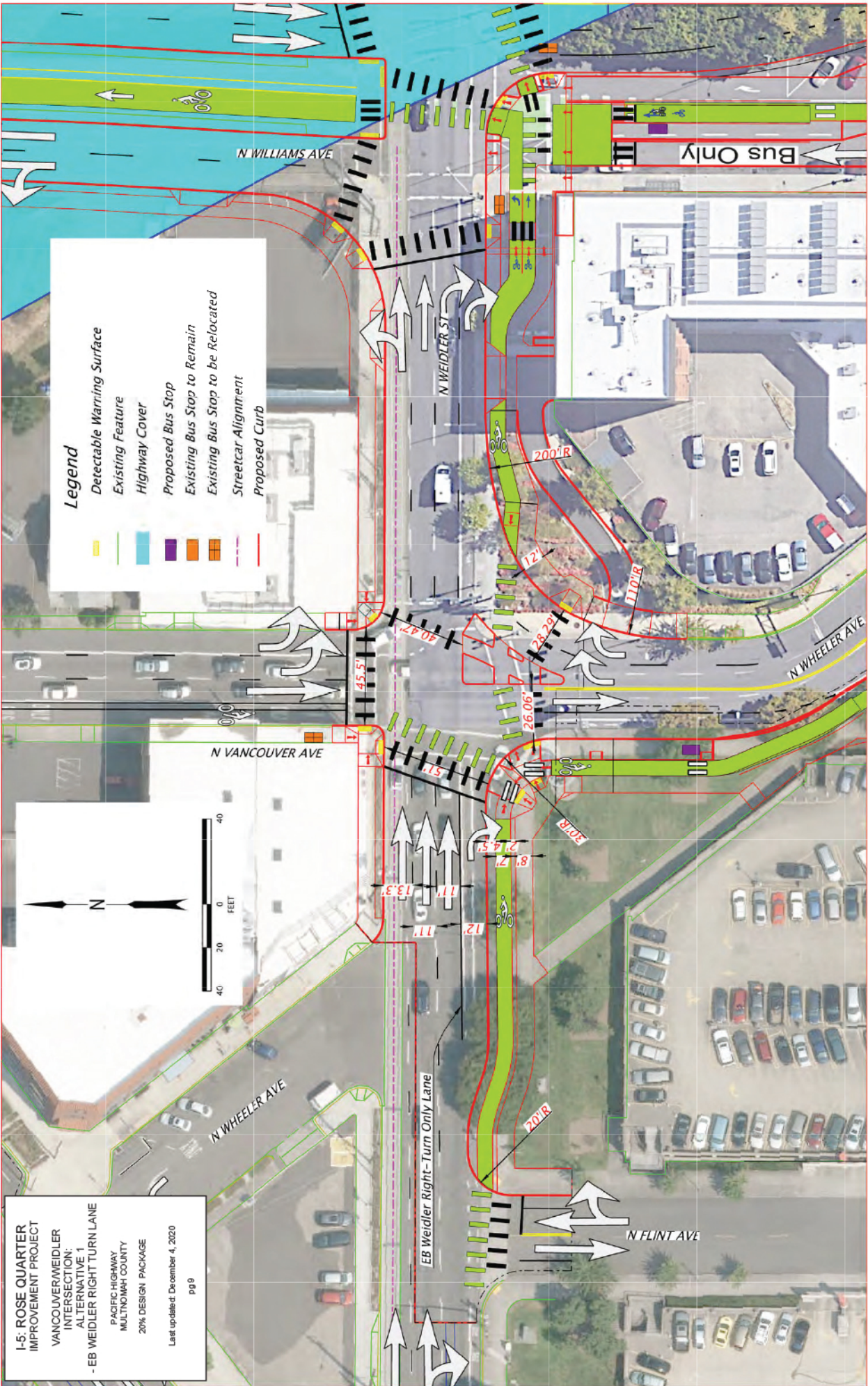
20.0R

20.0R

20.0R

20.0R

20.0R



Legend

- Detectable Warning Surface
- Existing Feature
- Highway Cover
- Proposed Bus Stop
- Existing Bus Stop to Remain
- Existing Bus Stop to be Relocated
- Streetcar Alignment
- Proposed Curb

North Arrow

Scale: 0, 20, 40 FEET

I-5: ROSE QUARTER IMPROVEMENT PROJECT
 VANCOUVER/WEIDLER INTERSECTION:
 ALTERNATIVE 1
 - EB WEIDLER RIGHT-TURN LANE

PACIFIC HIGHWAY MULTICOUNTY
 20% DESIGN PACKAGE

Last update: December 4, 2020
 pg 9

EB Weidler Right-Turn Only Lane

Bus Only

N VANCOUVER AVE

N WHEELER AVE

N FLINT AVE

N WILLIAMS AVE

N WEIDLER ST

N WHEELER AVE

40.42'

45.5'

13.3'

11'

11'

12'

8.2'

21.9.5'

26.06'

5.15'

11'

11'

12'

11'

11'

11'

11'

11'

200'R

12'

28.20'

200'R

50.8'

200'R

200'R

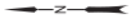
200'R

200'R

200'R

200'R

NE MARTIN LUTHER KING JR BLVD



NE 3RD AVE

NE BROADWAY

NE WEIDLER ST

NE CLACKAMAS ST

NE WASCO ST

Williams Cross Section and Bus Stop Location Alternatives (Hancock to Broadway)

NE SAN RAFAEL ST

NE HANCOCK ST

NE 2ND AVE

NE 1ST AVE

NE VICTORIA AVE

Clackamas Overcrossing

N WILLIAMS AVE

N VANCOUVER AVE

N WHEELER AVE

N WILLIAMS AVE

Moda Center

Garden Garage

East Garage

West Garage

N RAMSAY WAY

N HANCOCK ST

N WHEELER AVE

N FLINT AVE

N ROSS AVE

N DIXON ST

N BENTON AVE

N LARRABEE AVE

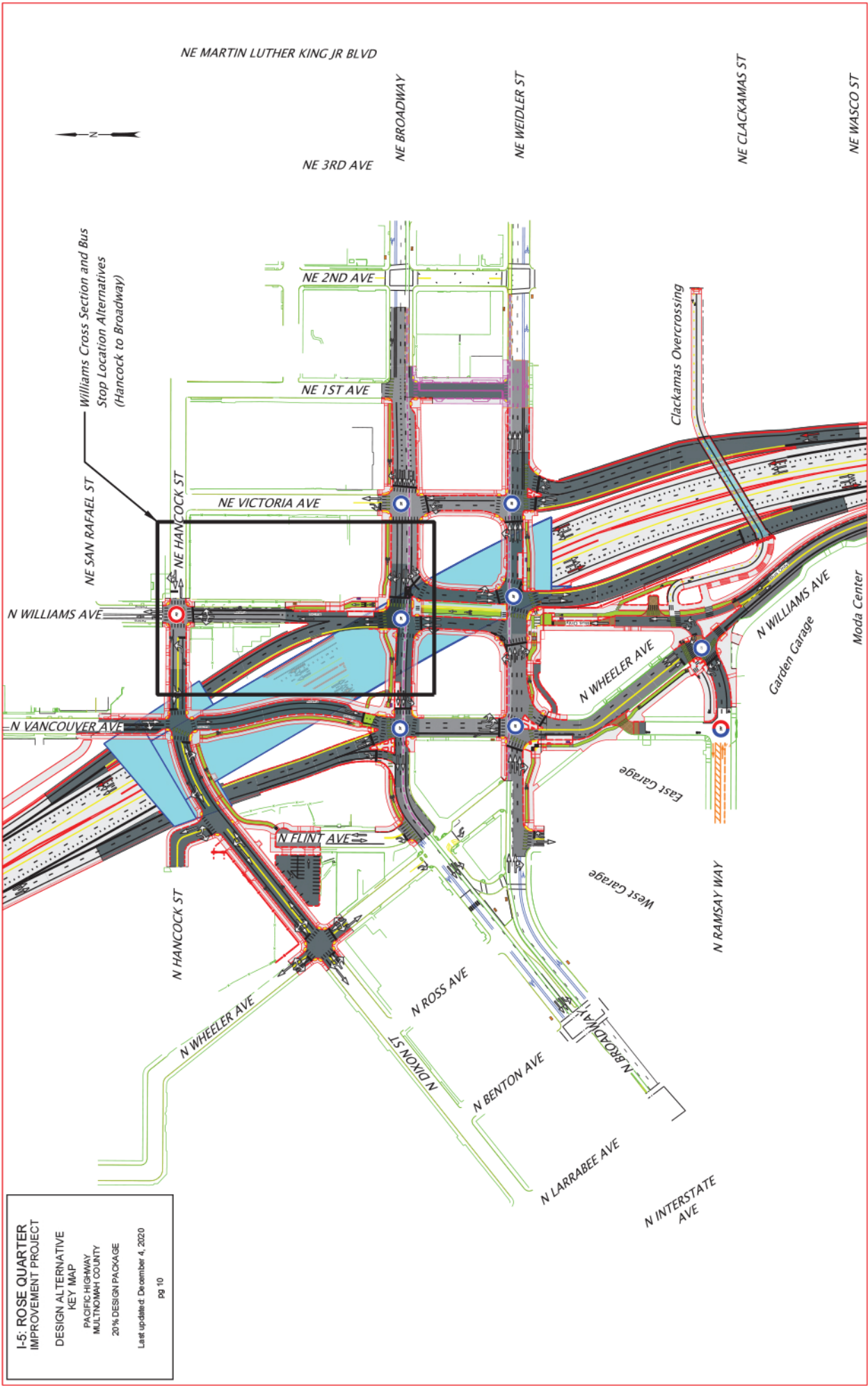
N INTERSTATE AVE

I-5: ROSE QUARTER IMPROVEMENT PROJECT DESIGN ALTERNATIVE KEY MAP

PACIFIC HIGHWAY MULTNOMAH COUNTY 20% DESIGN PACKAGE

Last updated: December 4, 2020

pg 10



N HANCOCK ST

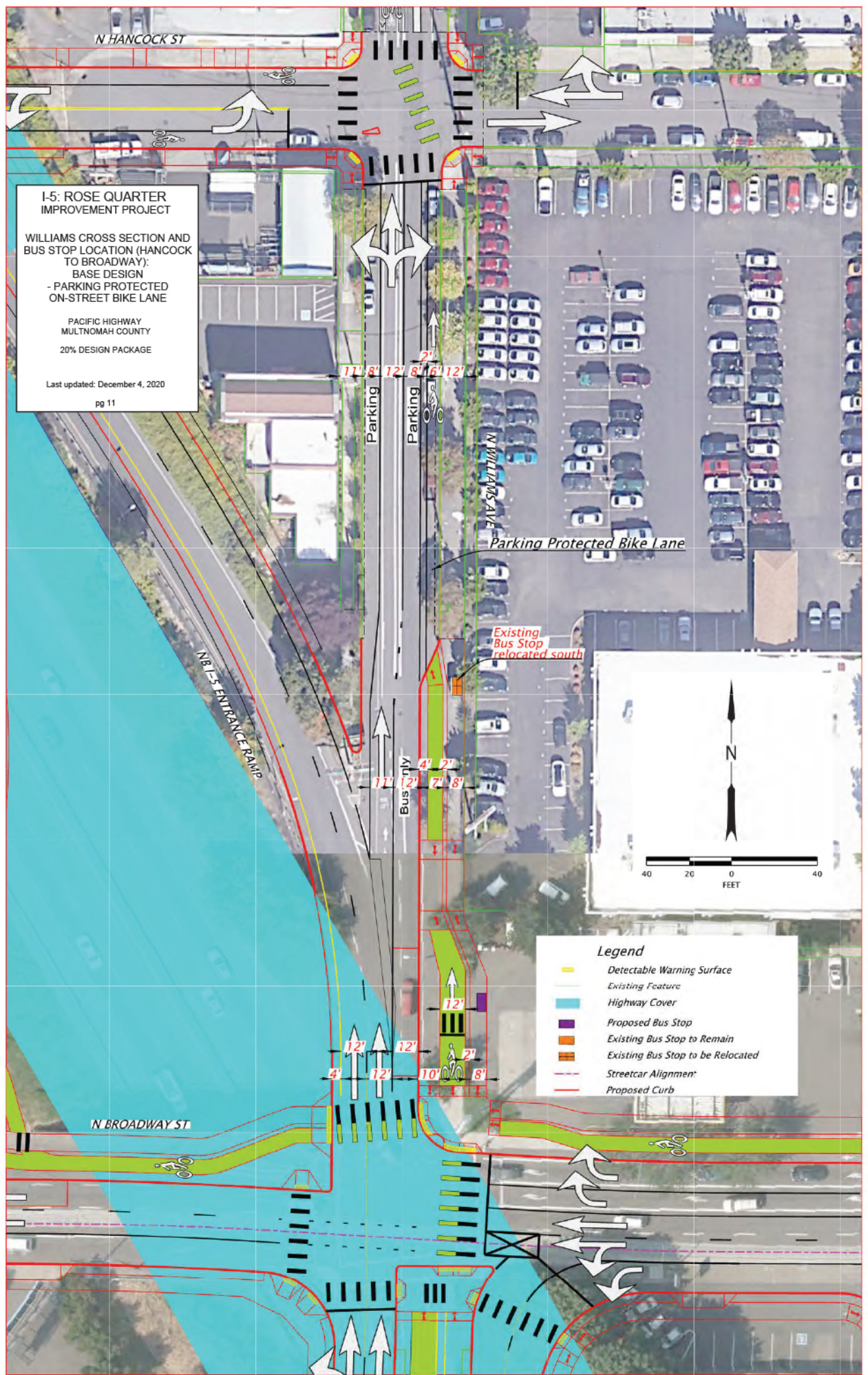
I-5: ROSE QUARTER IMPROVEMENT PROJECT

**WILLIAMS CROSS SECTION AND BUS STOP LOCATION (HANCOCK TO BROADWAY):
BASE DESIGN
- PARKING PROTECTED
ON-STREET BIKE LANE**

PACIFIC HIGHWAY
MULTNOMAH COUNTY
20% DESIGN PACKAGE

Last updated: December 4, 2020

pg 11



N HANCOCK ST

I-5: ROSE QUARTER IMPROVEMENT PROJECT








WILLIAMS CROSS SECTION AND BUS STOP LOCATION (HANCOCK TO BROADWAY): ALTERNATIVE 1 - PARKING PROTECTED ON-STREET BIKE LANE WITH EXISTING BUS STOP

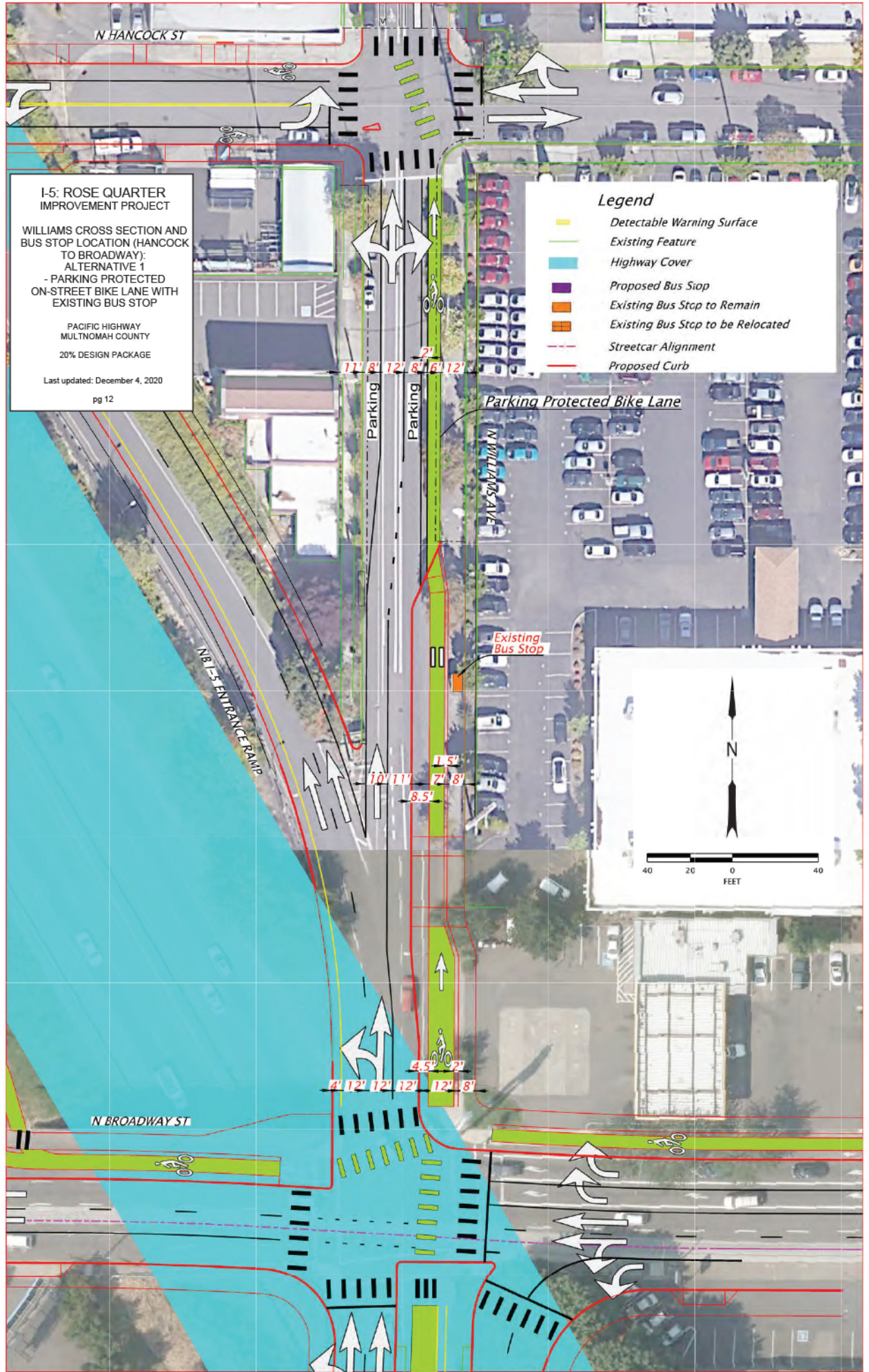
PACIFIC HIGHWAY MULTNOMAH COUNTY
20% DESIGN PACKAGE

Last updated: December 4, 2020

pg 12

Legend

-  Detectable Warning Surface
-  Existing Feature
-  Highway Cover
-  Proposed Bus Stop
-  Existing Bus Stop to Remain
-  Existing Bus Stop to be Relocated
-  Streetcar Alignment
-  Proposed Curb



N HANCOCK ST

I-5: ROSE QUARTER IMPROVEMENT PROJECT

WILLIAMS CROSS SECTION AND BUS STOP LOCATION (HANCOCK TO BROADWAY): ALTERNATIVE 2 - SIDEWALK LEVEL BIKE LANE

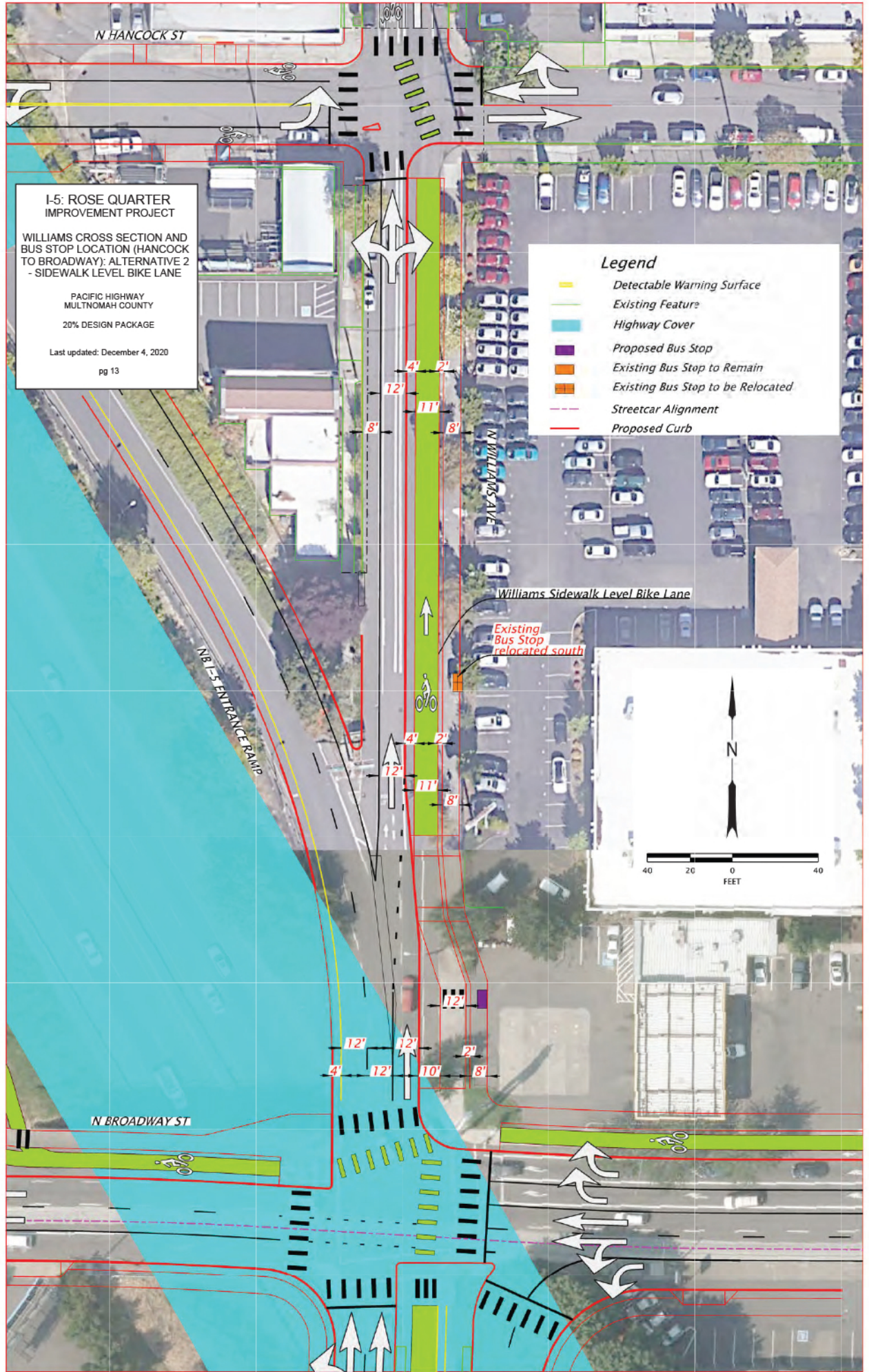
PACIFIC HIGHWAY
MULTNOMAH COUNTY
20% DESIGN PACKAGE

Last updated: December 4, 2020

pg 13

Legend

-  Detectable Warning Surface
-  Existing Feature
-  Highway Cover
-  Proposed Bus Stop
-  Existing Bus Stop to Remain
-  Existing Bus Stop to be Relocated
-  Streetcar Alignment
-  Proposed Curb



NB I-5 ENTRANCE RAMP

N WILLIAMS AVE

Williams Sidewalk Level Bike Lane

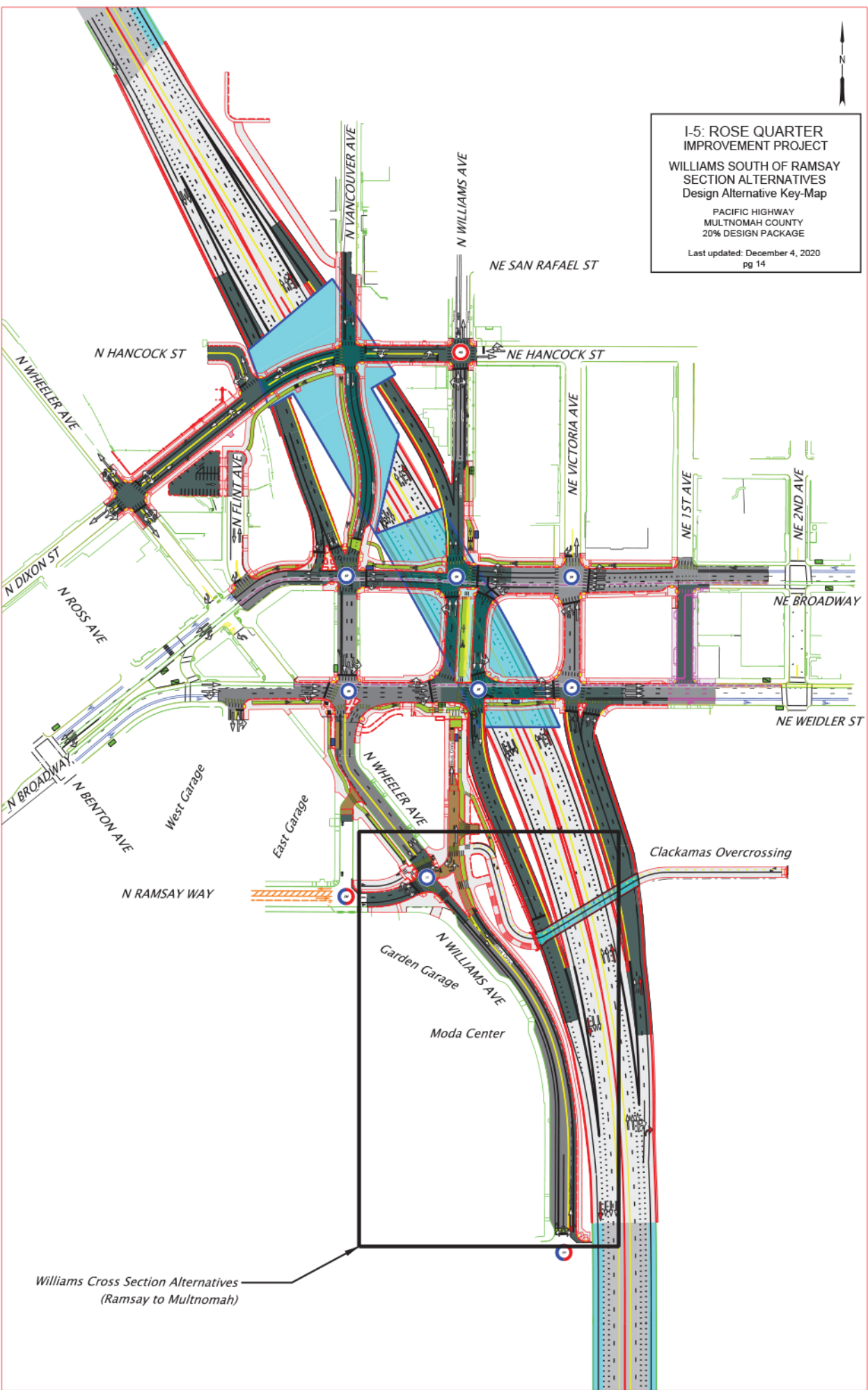
Existing Bus Stop relocated south

N BROADWAY ST

40 20 0 40
FEET



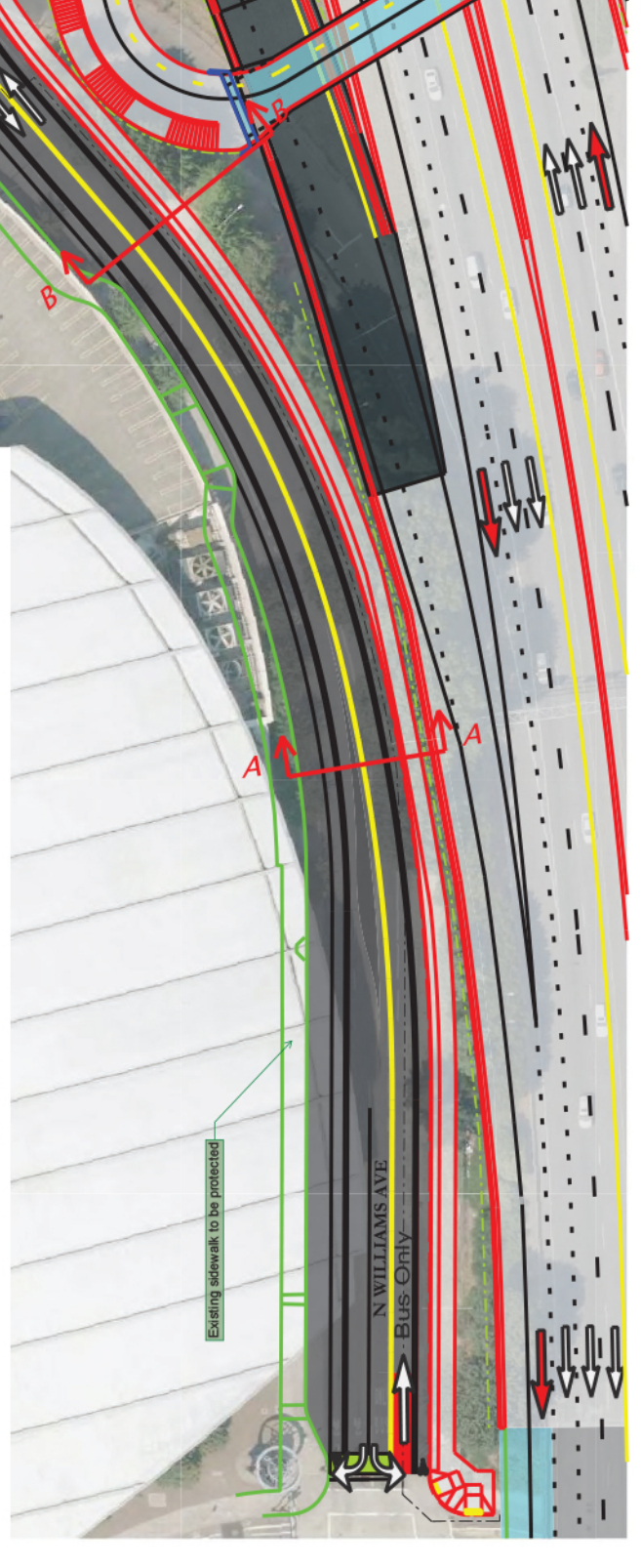
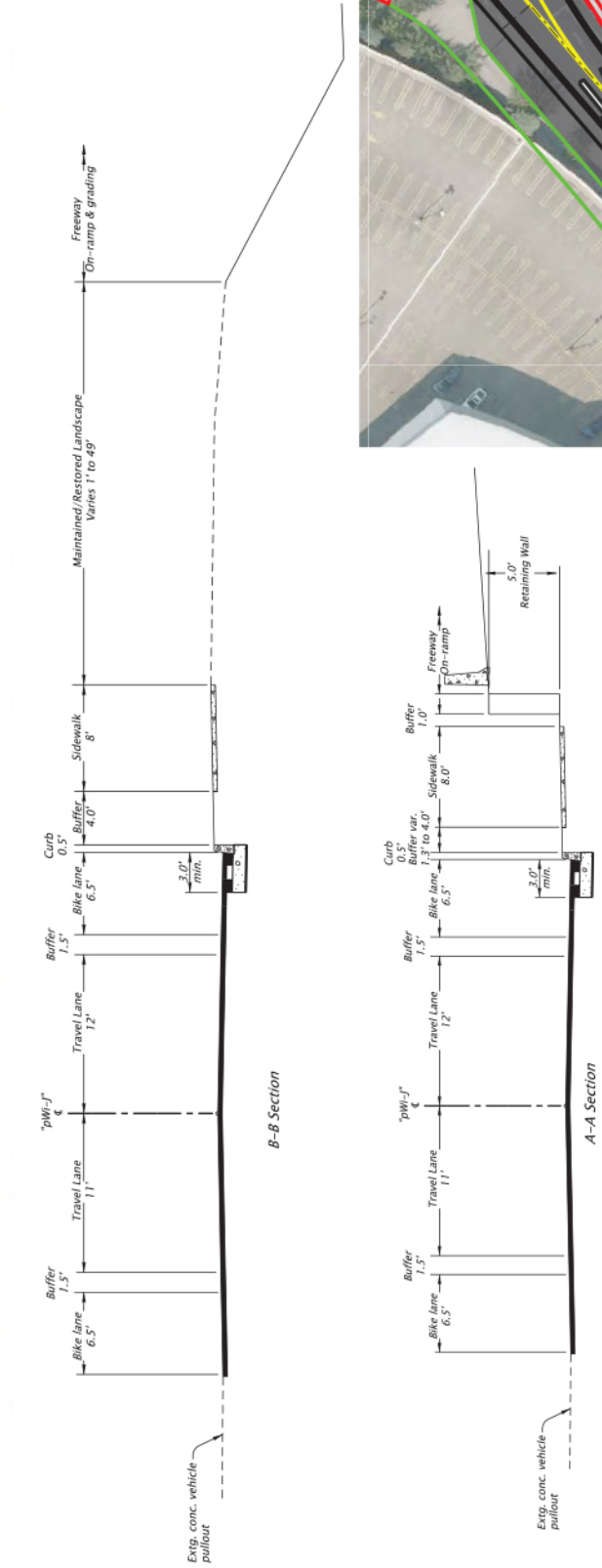
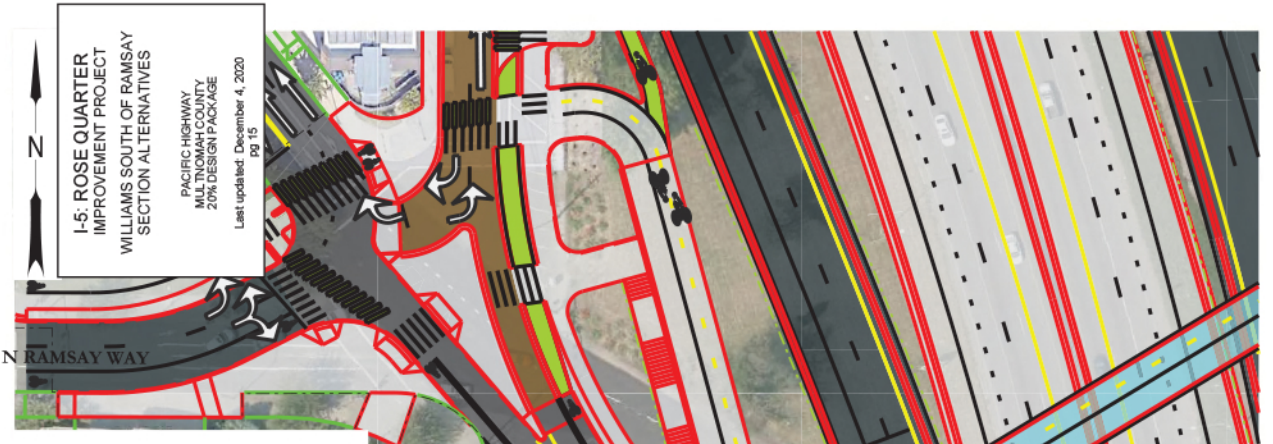
I-5: ROSE QUARTER
IMPROVEMENT PROJECT
WILLIAMS SOUTH OF RAMSAY
SECTION ALTERNATIVES
Design Alternative Key-Map
PACIFIC HIGHWAY
MULTNOMAH COUNTY
20% DESIGN PACKAGE
Last updated: December 4, 2020
pg 14



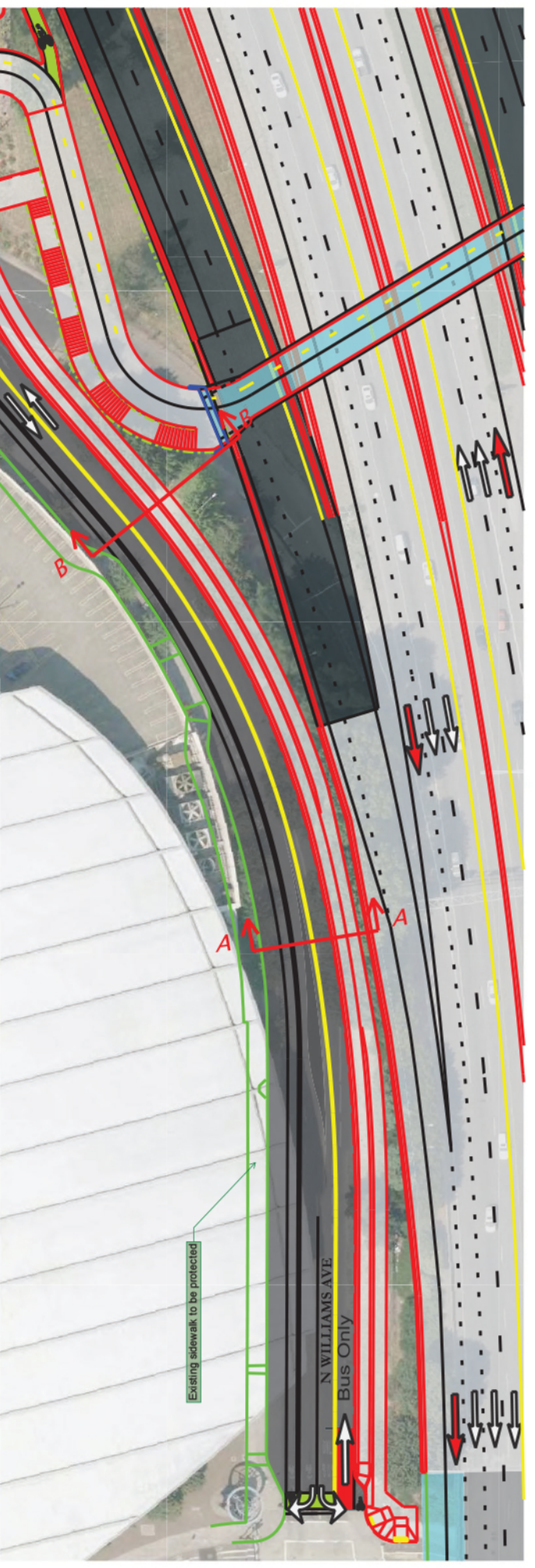
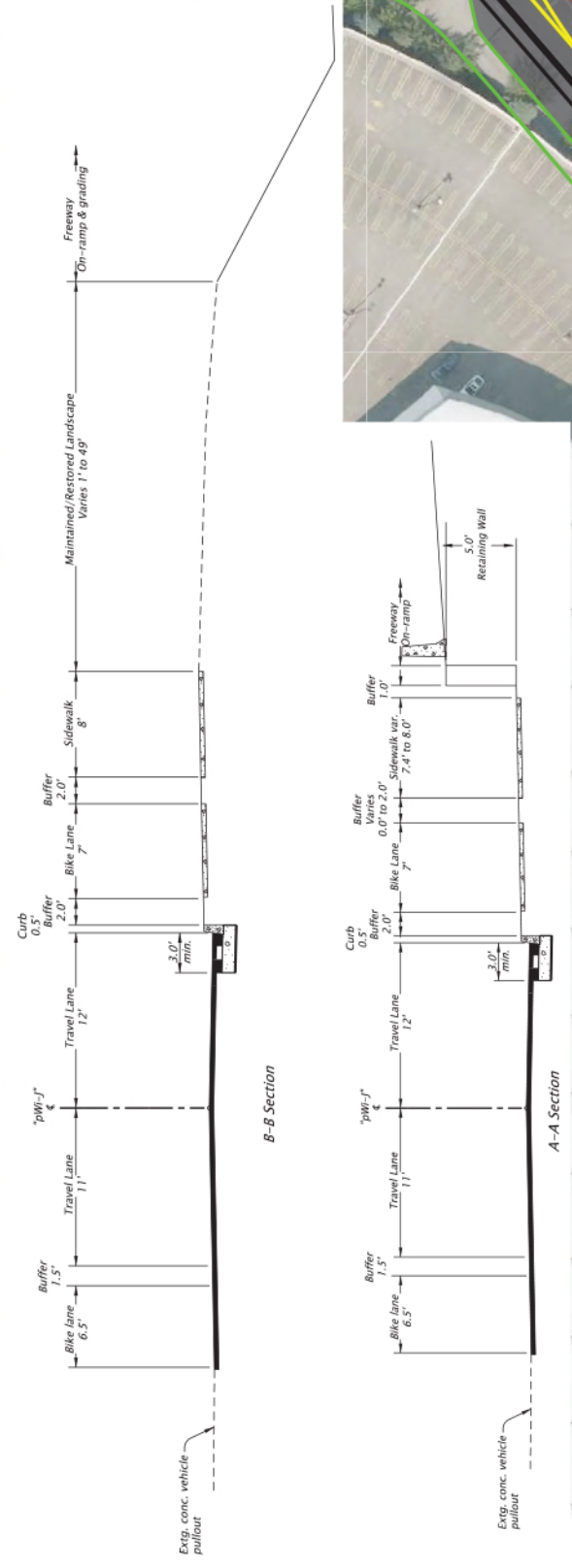
Williams Cross Section Alternatives
(Ramsay to Multnomah)

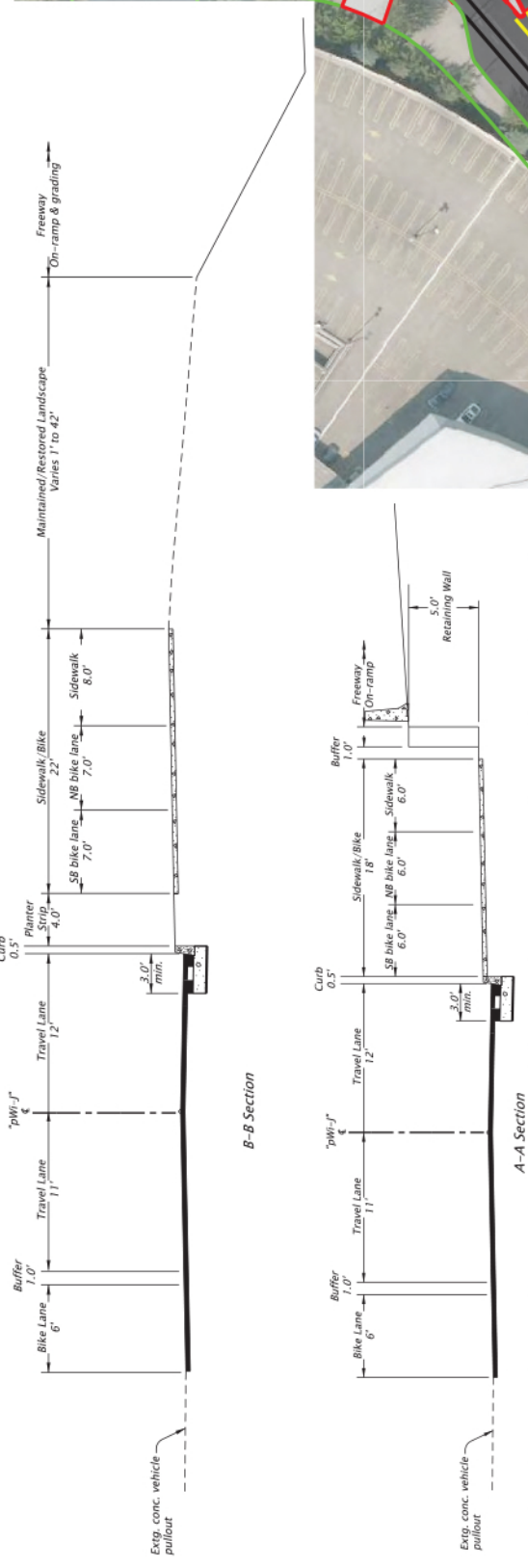
**I-5: ROSE QUARTER
IMPROVEMENT PROJECT
WILLIAMS SOUTH OF RAMSAY
SECTION ALTERNATIVES**

PACIFIC HIGHWAY
MULTINOMAH COUNTY
20% DESIGN PACKAGE
Last updated: December 4, 2020
pg. 15

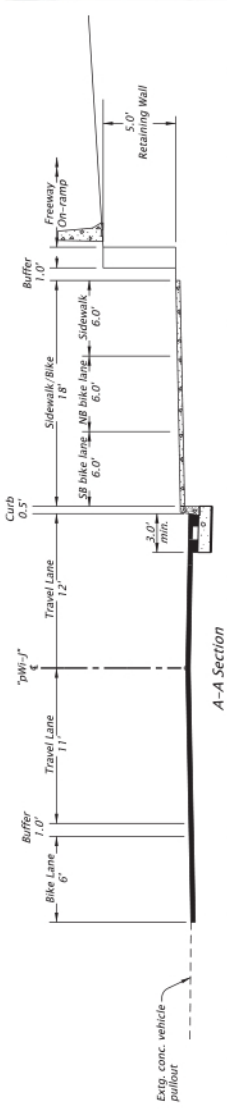


I-5: ROSE QUARTER IMPROVEMENT PROJECT
WILLIAMS SOUTH OF RAMSAY SECTION ALTERNATIVES
SIDEWALK LEVEL BIKE LANE DESIGN ALT.
 PACIFIC HIGHWAY MULTNOMAH COUNTY
 20% DESIGN PACKAGE
 Last updated: December 4, 2020
 Pg 16

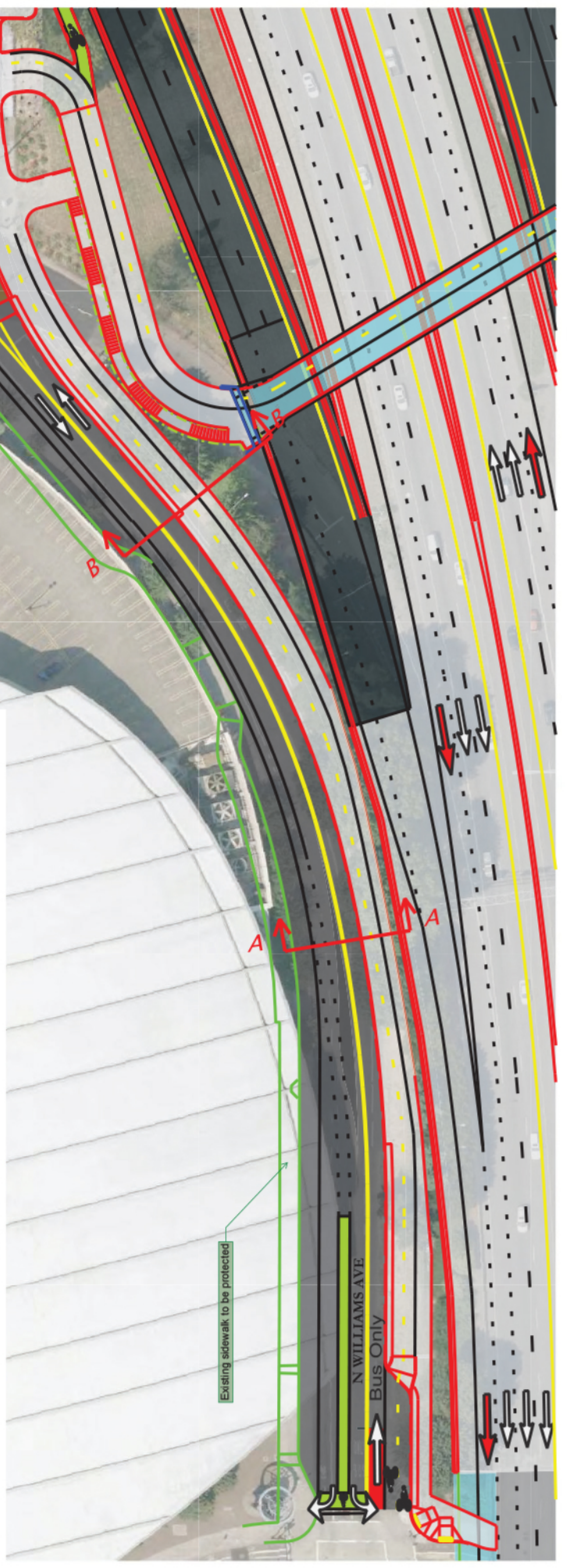
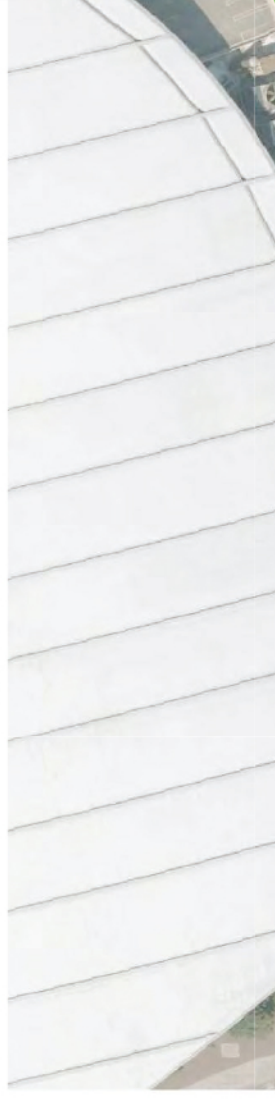




B-B Section



A-A Section



Existing sidewalk to be protected

N WILLIAMS AVE
Bus Only

This page is intentionally left blank.