

September 28,  
2020

ESC Meeting  
#1

ODOT // I-5 Rose Quarter Improvement Project

# Independent Cover Assessment

ZGF



September 28, 2020

# Agenda

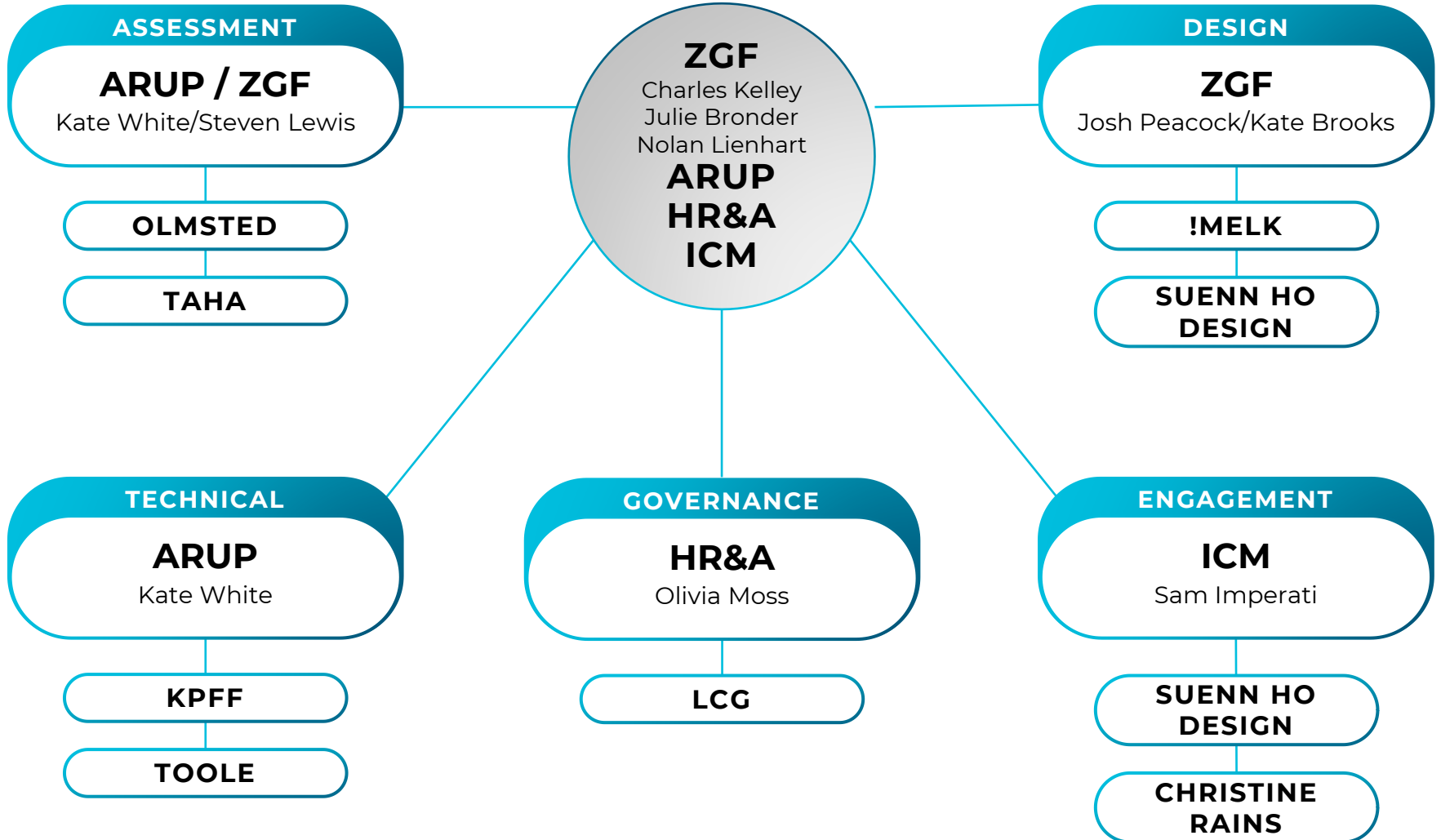
- 00 **Welcome + Setting the Stage**  
Sam Imperati
- 01 **Team**  
Nolan Lienhart
- 02 **Scope**  
Nolan Lienhart
- 03 **Process**  
Nolan Lienhart
- 04 **Independence**  
Sam Imperati
- 05 **Values + Outcomes**  
Steven Lewis
- 06 **Discussion + Questions**  
All

# Team



# Team Organization

## CORE TEAM





# Scope

# Why?

We gather to **take action toward righting the wrongs of the past.** We commit to move forward to create a project that is integrated into the **vision of a safer, more just and inclusive Albina community** and greater Portland Region. We work to establish a more predictable international transport system that supports the resiliency of rural and urban Oregon while managing demand in the I-5 corridor. We must ensure **historically marginalized communities benefit from the investment of this project.**

# Three Questions to be Answered

- 01** How can this project serve community aspirations on the highway covers and areas immediately adjacent to the highway covers, within area of potential impact as defined in the EA?
- 02** What modifications to the current design and configuration of the highway covers would be needed to reflect a broader community vision for development of the Project Area?
- 03** Are there other architectural and engineering considerations to feasibly promote economic development and growth potential, consistent with the community's vision?

# Scenarios

**Base Case**      The NEPA Environmental Assessment

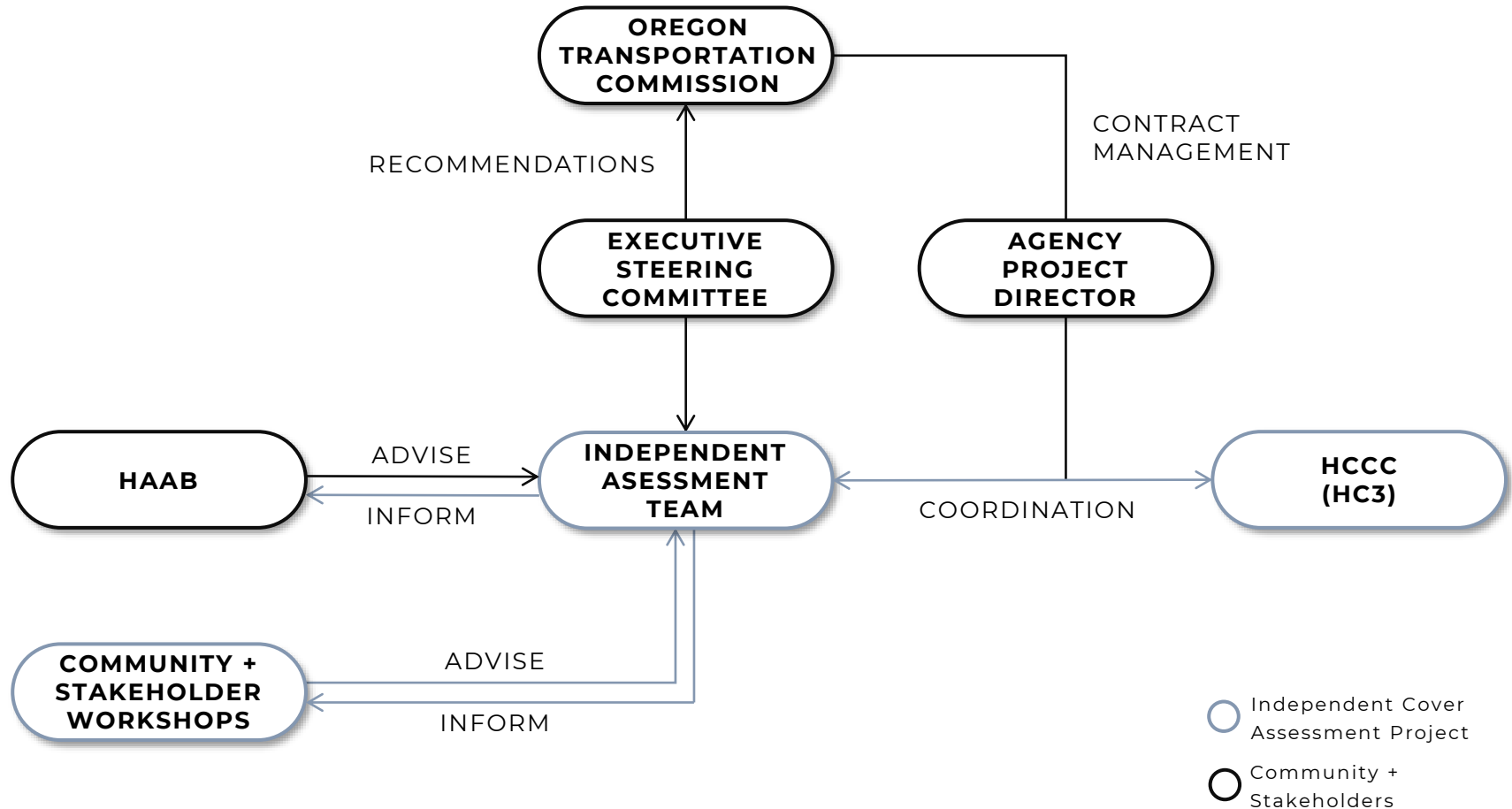
- 01**      Scenario One: Limited to the NEPA Environmental Assessment Area of Potential Impact (API)
- 02**      Scenario Two: May extend beyond the NEPA Environmental Assessment API.
- 03**      Scenario Three: Determined by the ESC.



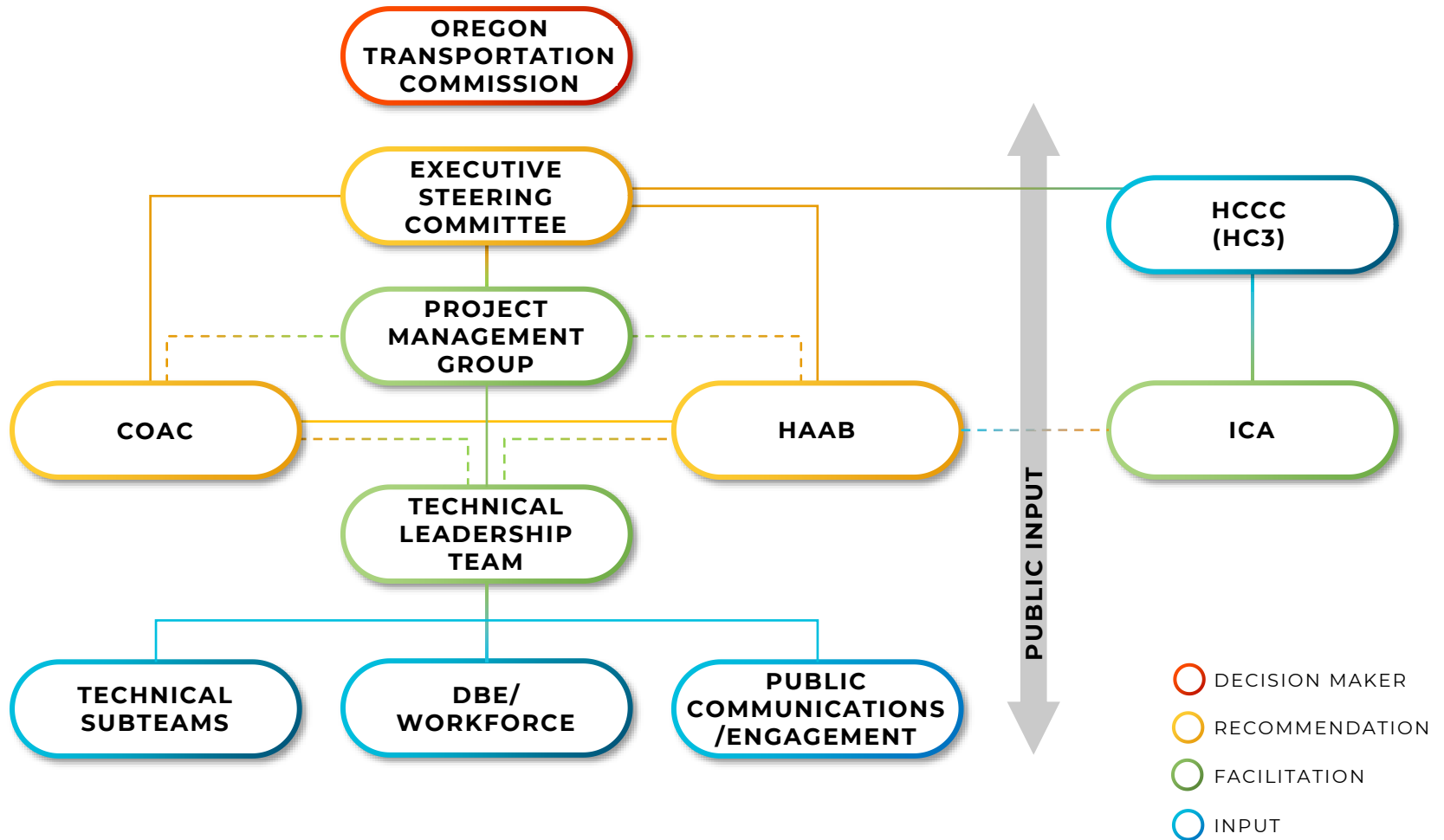


# Process

# Independent Cover Assessment Organizational Chart



# ICA Interface with RQIP Organizational Chart



# Executive Steering Committee

## ESC

RECOMMENDATION

Directing the Independent Highway Cover Assessment consultant team in assessing the highway cover design and recommending the highway cover design scenarios to be presented to the OTC for direction and approval.

### Work Sessions



# Highway Cover Coordinating Committee

## **HCCC (HC3)**



The HC3, with representatives from ODOT, Metro and PPS (and information made available to the City, County, and Albina Vision Trust) will serve as the staff working group to support our independent development and refinement of the three development scenarios and to review and provide input on the deliverables (to be considered by) the ESC and OTC. The HC3 (on behalf of the ESC) will provide a forum for the discussion of ICA work progression, schedule, change management, and other relevant topics.

# Historic Albina Advisory Board

## HAAB



Formerly “CAC” (Community Advisory Committee). Rose Quarter Improvement Project Historic Albina Advisory Board (HAAB) that directs the design of the Rose Quarter Improvement Project

### Work Sessions



# Community Workshops



- 01** Invitation to key organizations, stakeholders, and community members.
- 02** Online meetings with agenda to address the themes and topics in each work session.
- 03** Results will be summarized and included in the assessment and inform the scenarios.

## Work Sessions



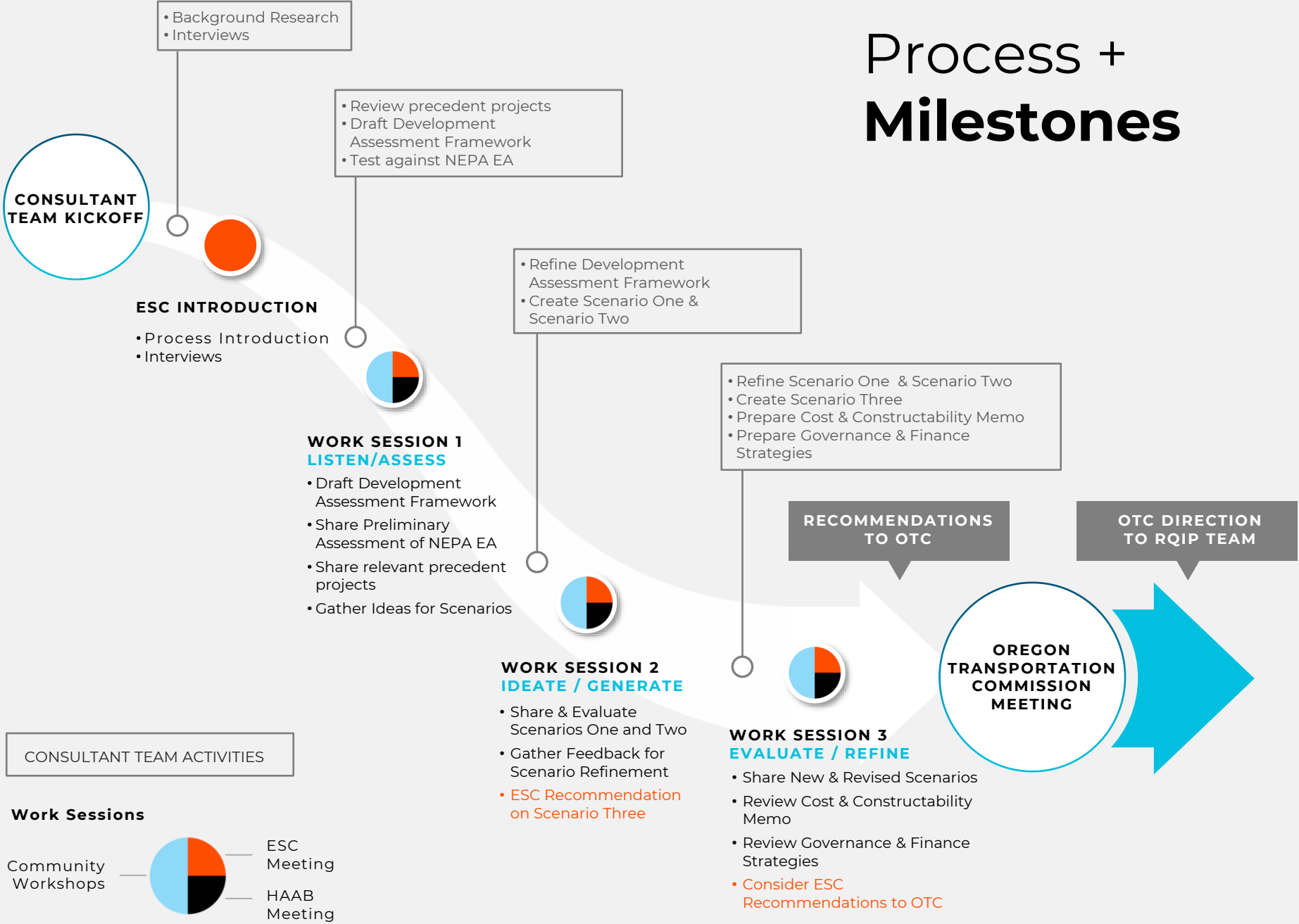
# Stakeholder Group Meetings



Third-party stakeholder meetings occur during work sessions or independent from work sessions to ensure marginalized voices are heard, and deepen understanding of critical pain points and shared opportunities.



# Process + Milestones



# Work Session 1.

## **Listen/Assess**

### Workshop and Committee Meeting Theme

“How can these covers be used to support community needs?” Topics:

- 01** What are the Community Values and desired outcomes?
- 02** What constraints and opportunities should guide creation of scenarios?
- 03** What metrics should be used to measure success?

(Includes ESC, HAAB, HC3, ICA team meetings, and two Community Workshops)

# Work Session 2.

## Ideate/Generate

**Workshop and Committee Meeting Theme - “Restorative Community Improvements”**

**Topics:**

- 01** How can a new experience and function support a restorative community on and around the highway covers?
- 02** What feasible improvements can the freeway project make to sustain an urban neighborhood for the historically impacted Albina community?
- 03** Should a third scenario be created to address additional opportunities to meet community priorities, or to address shortcomings in Scenario One and Two?

(Includes ESC, HAAB, HC3, ICA team meetings, and two Community Workshops)

# Work Session 3.

## **Evaluate/Refine**

**Workshop and Committee Meeting Theme**  
**“Making a Deal” Topics:**

- 01** What financial and operational partnerships and tools may be needed to finance and implement desired improvements?
- 02** How well does each scenarios serve the Community Vision and outcomes?

(Includes ESC, HAAB, HC3, ICA team meetings, and two Community Workshops)

An aerial photograph of a city, likely Independence, Missouri, featuring a river, a complex highway interchange, and various urban buildings. The image is overlaid with a teal color filter. The word "Independence" is written in large, white, sans-serif font across the center of the image.

# Independence

# ICA Team

## **Independence**

**Context, the contract provides the following:**

- 01** All reasonable efforts to maintain its professional independence.
- 02** Confer with the ESC and APD to support the ESC's deliberations and recommendations to the OTC.
- 03** The Consultant is solely responsible for the analyses.
- 04** HC3 has a coordination role; including ESC member staff to support independent assessment team in the development and refinement of information to be reported to the ESC and OTC.

# ICA Team

## **Independence**

### **Sam's Unique Role:**

Monitor the independence of the Consultant's review process and report to the ESC, HC3, and APD on compliance with the Facilitation Needs Assessment Report.

An aerial photograph of a city, likely Portland, Oregon, featuring a large, modern stadium with a curved roof in the foreground. A river flows through the city, with several bridges crossing it. The background shows a dense urban area and distant hills under a cloudy sky. The entire image is overlaid with a teal color filter.

# Values + Outcomes



# ESC's Values and Outcomes

As we look to future investments in the Albina area, including the I-5 Rose Quarter Improvement Project, we collectively seek to advance the following outcomes through our common set of values. With these values, we seek to build trust and foster collaborative partnerships. **For a successful project and complimentary investment in the Albina community, organizations with transportation, land use and development authority will need to build and maintain strong partnerships with each other and the community.**

- **Restorative Justice • Community Input and Transparent Decision Making**
- **Mobility Focused • Climate Action and Improved Public Health**



# Discussion

