

WELCOME COAC MEETING

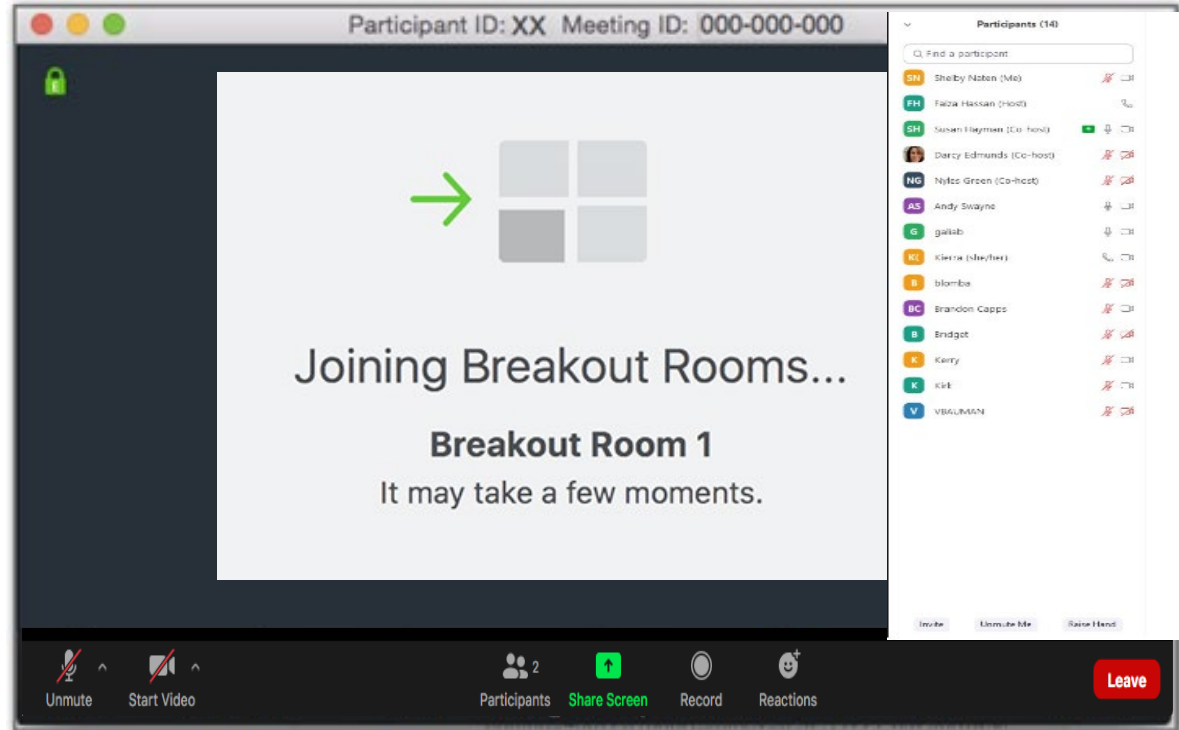
April 22, 2021





Zoom Participant Review

- » Zoom view available for Presenters and COAC members; the general public viewing via YouTube livestream
- » Please raise your hand to speak – please remain on mute until recognized
- » COAC: Please keep your video camera on
- » Others: Please keep your video off unless speaking



Technical issues?
Text or call Grace at: 503-479-8674



Agenda

1. Welcome, Meeting Platform and Ground Rules
2. Project Updates—Project Committee Updates
3. Overview COAC March 4 Meeting Summary Notes
4. Diversity Plan—Overview of *Greensheet* Process & COAC Discussion (Breakouts; COAC Reports Out)
5. Public Comments
6. Conclusion and Next Steps



Meeting Format and Overview

- General Public attendees (non-COAC members) will be in listen-mode.
- Today's meeting will be live streamed and recorded via YouTube and will be made public on ODOT's Project website, i5RoseQuarter.org.
- After the breakout group session, the General Public is invited to rejoin the meeting for the report-back summary and discussion, and public comment.

Technical issues?
Text or call Grace at: 503-479-8674



Meeting Format and Overview

- Due to technical limitations of livestreaming, members of the public are not able to listen to or view the breakout sessions in real time.
- At 5:42 p.m. COAC members will reconvene with the larger committee and report their summary from each breakout session.
- Recommendations from each breakout group will be presented and discussed publicly at that time.
- Recordings of the individual sessions will be posted online once available after the meeting.

Technical issues?
Text or call Grace at: 503-479-8674



Ground Rules and Facilitation

- Let everyone participate by listening to and respecting diverse views and opinions
- Listen with an open mind
- Value learning from different input
- Stay open to new ways of doing things
- Treat others constructively and respectfully



Ground Rules and Facilitation

- Respect the role of the facilitator to guide the group process
- Attack the problem, not the person
- Disagreement, frustrations and differences of opinion are acknowledged, explored and addressed

PROJECT UPDATES



OVERVIEW OF COAC MARCH 04 MEETING SUMMARY NOTES



OVERVIEW OF CM/GC GREENSHEET PROCESS & COAC DISCUSSION





Anticipated Outcomes

- Maximize opportunities and build capacity of Disadvantaged Business Enterprise (DBE) firms for current and future projects
- Furthering expertise by providing technical assistance and assist in certification for DBE firms
- Providing new opportunities by facilitating new relationships between DBE subcontractors and primes



Anticipated Construction

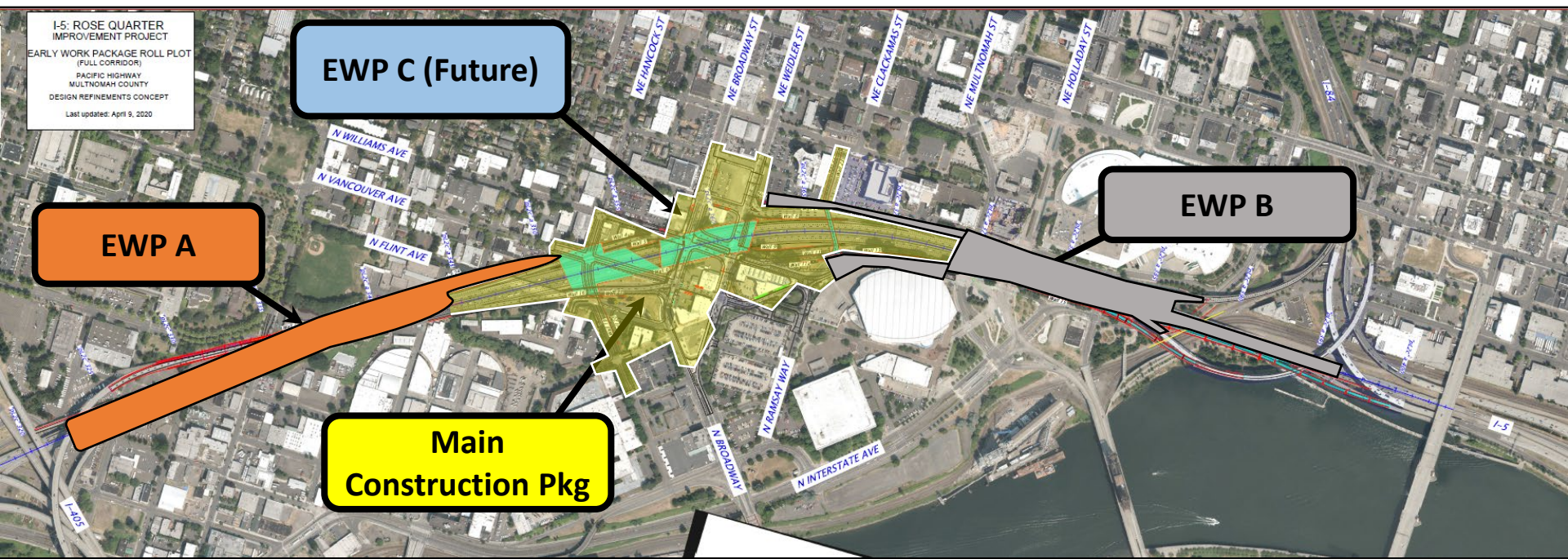
- Work divided into four packages
 - Early work package (EWP) A construction (North)
 - EWP B construction (South)
 - EWP C construction (Demolition, etc.)
 - Main construction work (Middle)
- Construction schedule 2023-2027
- Project total per 2020 *Cost to Complete* report: \$591-\$654 million*

**in 2025 dollars*



I-5 Rose Quarter Project

I-5: ROSE QUARTER
IMPROVEMENT PROJECT
EARLY WORK PACKAGE ROLL PLOT
(FULL CORRIDOR)
PACIFIC HIGHWAY
MULTNOMAH COUNTY
DESIGN REFINEMENTS CONCEPT
Last updated: April 9, 2020



- Package A:**
- 5 bridges
 - 7 walls
 - 2 Stormwater Fac
 - Ramp work
 - Mainline paving

- Package C:**
- Various demolitions

- Main Package:**
- I-5 cover
 - 12 walls
 - Lower I-5 mainline
 - Various city streets
 - Clackamas Bridge

- Package B:**
- 7 bridges
 - 5 walls
 - Ramp work
 - Mainline paving



What Are We Building - Structures

Highway Cover * (\$120M-\$150M) Main Package	Bridges (\$70M- \$90M) Packages A, B & Main	24 Walls (\$35M-\$45M) Packages A, B & Main
Cast-in-place (CIP) concrete structure	Cast-in-place concrete box girder	Mechanically stabilized earth (MSE)
	Drilled shaft	Cast-in-place concrete
* Preliminary, based off of 20%	Pile	Sound Attenuation
* Awaiting Independent Cover Assessment	Steel girder	
* Awaiting Oregon Transportation Commission direction	Pre-cast girder	



What Are We Building

Roadway (\$90M-\$110M) Packages A, B & Main	Streetscape (\$80M-\$90M) Main Package	Electrical / Signing / Lighting / Signals / ITS (\$10M-\$15M) Packages A, B & Main	Ancillary Scopes (\$40M-\$60M) Packages A, B & Main
Removals & demolition	Landscaping & aesthetic elements	Temporary and permanent lighting	Construction survey
Excavation & grading	Utilities	Variable message signage (VMS)	Maintenance of traffic (MOT)
Subgrade stabilization	Drainage	Traffic signals	Erosion Control
Reinforced concrete paving	Concrete sidewalks	Intelligent transportation systems (ITS)	
	Paving		

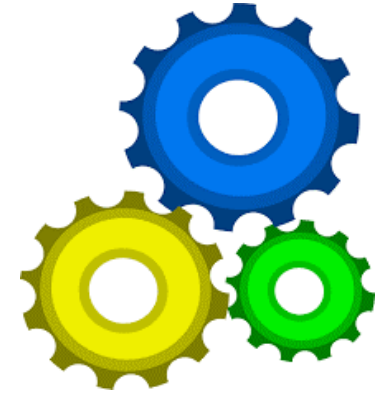


Preliminary Analysis

- Preliminary design
 - 20% design level
 - Assumptions where lacking details
- Awaiting Independent Cover Assessment (ICA)
- Local historical construction values
- Changing market conditions



Greensheet Process



Inputs

- Project scope
- DBE community

Process

- Tie scope to DBEs
- Apply successful experience
- Use local knowledge
- Consider current conditions

Outputs

- DBE subcontracting opportunities
- Capacity building opportunities
- Mini-Construction Manager/General Contractor (Mini-CM/GC)/priming opportunities



20% Greensheet Example

1st Tier
Subcontracting
for DBEs

Capacity
Building

Mini – CM/GC

B	D	E	F	G	H	I	J	K	L	M	N
1		HAMILTON SUNDT		I5 Rose Quarter Improvement Project							
2		A JOINT VENTURE		Preliminary Cost Estimate: 20%							
3		IN ASSOCIATION WITH RAIMORE									
6	Biditem	Description	Bid Quantity	Unit	Total Cost	Likely Subcontracted	Likely DBE	Potential DBE	DBE MCMGC	MCMGC Self-Perform	MCMGC 2nd Tier DBE
267	240000	DRILLED SHAFT REINFORCEMENT, GRADE 60	1	LS	186,551	167,896		167,896			
280	253000	REINFORCEMENT, GRADE 60	200,600	LB	500,903	450,813		450,813			
299	272000	SURFACE PREPARATION	1	LS	83,745	83,745		83,745			
300	273000	COATING APPLICATION	1	LS	55,830	55,830		55,830			
301	274000	COATING MATERIALS	1	LS	13,958	13,958		13,958			
302	275000	CONCRETE SLOPE PAVING	1,030	SQ F	38,596						
303	276000	POTENTIAL FOUNDATION IMPROVEMENT (BENT 9)	1	EACH	434,840						
330	598 - Retaining Walls & Sound Walls										
331	303000	RETAINING WALL, WALL 1 (CANTILEVER SOLDIER PILE	2,175	SF	619,876	619,876			619,876	185,963	123,975
332	304000	RETAINING WALL, WALL 2a (CANTILEVER SOLDIER PIL	5,066	SF	1,590,202	1,590,202			1,590,202	477,061	318,040
333	305000	RETAINING WALL, WALL 2b (ELIOT WALL, FOR DETAIL	6,630	SF	8,041,953	1,608,391	321,678				
334	306000	RETAINING WALL, WALL 3B (SOLDIER PILE WALL)	4,000	SF	1,500,639	1,500,639			1,500,639	450,192	300,128
335	307000	RETAINING WALL, WALL 3T (SOLDIER PILE WALL WITH	3,025	SF	2,583,909	2,583,909			2,583,909	775,173	516,782
336	308000	RETAINING WALL, WALL 3 (LIGHTWEIGHT BACKFILL)	1,500	CUYD	487,503	487,503			487,503	146,251	97,501
337	308050	RETAINING WALL, WALL 3 NCW (NORTH COVER WIN	2,540	SF	1,629,402	325,880	65,176				
338	309000	RETAINING WALL, WALL 4 (CANTILEVER SOLDIER PILE	3,650	SF	2,723,041	544,608	108,922				
339	313000	RETAINING WALL, WALL 7 (CANTILEVER SOLDIER PILE	4,435	SF	1,304,053	1,304,053			1,304,053	391,216	260,811
340	314000	RETAINING WALL, WALL 8 (SOLDIER PILE TIE-BACK)	6,350	SF	1,643,415	1,643,415	328,683				
341	315000	RETAINING WALL, WALL 9 (SOLDIER PILE TIE-BACK)	7,715	SF	1,941,010	1,941,010	388,202				
342	316000	RETAINING WALL, WALL 11 (MSE)	3,660	SF	1,176,776	1,176,776	1,176,776				
343	317000	RETAINING WALL, WALL 11a (MSE)	558	SF	118,152	118,152	118,152				
344	318000	RETAINING WALL, WALL 11b (MSE)	1,474	SF	283,429	283,429	283,429				
345	319000	RETAINING WALL, WALL 12 (CANTILEVER SOLDIER PIL	6,965	SF	1,821,487	1,821,487			1,821,487	546,446	364,297



DBE Opportunities

- 1st tier subcontracting opportunities
 - Earthwork, grading, trucking
 - Electrical
 - Walls
 - Drainage
 - Landscaping
 - Asphalt paving
 - Construction survey
 - Maintenance of traffic
 - Erosion control



DBE Opportunities

- Capacity building/expanded opportunities
 - Reinforcing steel
 - Bridge demolition
 - Signage
 - Painting and coating
 - Variable message signage/ITS
 - Roadway barriers/attenuators



DBE Opportunities / Mini-CM/GC

- Mini prime: intent of Mini-CM/GC
- 3 to 5 Firms
- Scopes TBD, likely include streetscape, walls



General DBE Buckets

- Overall DBE: \$145M-\$175M
 - 1st tier - \$65M-\$75M
 - Capacity building - \$25M-\$35M
 - Mini-CM/GC - \$55M-\$65M



Building Support for the Process

- Well established methodology
- Early identification of scope
- Extensive outreach
- Leverage relationships



Next Steps Greensheet Tool

- Mini CM/GC
- Advance EWP A and B
 - Greensheet tool based on 30% design level
- Apply workforce analysis

BREAKOUT GROUPS





Breakout Group Process

- Designate group's spokesperson for report out.
- COAC members and facilitators will automatically be brought to their assigned breakout groups.
- At 5:42 p.m. COAC members, facilitators and presenters will be brought back to the main session.



Breakout Groups

Group Number	Facilitator
Group #1	Bill Bruce
Group #2	Jeff Moreland



Breakout Question to COAC

With the assumption that \$145M-\$175M worth of DBE contracting is unprecedented, what recommendation can COAC make to improve in connecting these project scopes and values with contractors, while meeting community expectations?

BREAKOUT GROUPS

* We'll reconvene at 5:42 p.m. *

- Livestream observers may provide written comments to info@I5RoseQuarter.org with the subject line “*COAC Public Comment*”;
- Verbal comments can be submitted via Voicemail at [503-470-3127](tel:503-470-3127);
- There will be an opportunity to provide a brief oral comment near the end of the meeting; and
- All written comments received will be added into the meeting record.





Breakout Question to COAC

With the assumption that \$145M-\$175M worth of DBE contracting is unprecedented, what recommendation can COAC make to improve in connecting these project scopes and values with contractors, while meeting community expectations?



DBE Scopes of Work (all types)

- Earthwork, grading, trucking
- Electrical
- Walls
- Drainage
- Landscaping
- Asphalt paving
- Construction survey
- Maintenance of traffic
- Erosion control
- Reinforcing steel
- Bridge demolition
- Signage
- Painting and coating
- Variable message signage/ITS
- Roadway Barriers/attenuators
- Streetscapes
- Walls

WELCOME BACK

**COAC REPORTS OUT
AND DISCUSSION**



PUBLIC COMMENTS





Due to the unprecedented logistical and public health challenges presented by COVID-19, public comment will proceed as follows :

VERBAL

- » Live Call: Zoom dial-in number: **971-247-1195** enter Meeting ID: **838 2563 9732** Passcode: **218776**. You'll be placed in a virtual waiting room until time to speak
- » Voicemail: **503-470-3127**
- » Speakers will have 1 minute for comments; state your name and speak slowly
- » Speakers can also state "I wish to remain anonymous"

WRITTEN

- » Email: info@I5RoseQuarter.org
- » Submit via project website: i5RoseQuarter.org
- » In subject line input: "COAC Public Comments"

All comments and questions will become part of the public record.

CONCLUSION AND NEXT STEPS

