

WELCOME!

HISTORIC ALBINA ADVISORY BOARD MEETING

- *Choose your phone or computer speakers/microphone for audio. If you use your phone, please mute your computer speakers to prevent sound feedback.*
- *Board members will be muted at the start of the meeting and when not speaking.*
- *This meeting is being live captioned. Public observers will remain muted. To provide public comment, please be ready to dial: **(971) 247-1195**.*
- *If you experience technical difficulties, call or text **(503) 479-8674** and assistance will be provided as soon as possible. Thanks!*





Agenda

- » Welcome, Introduction, Agenda Review
- » Public Comment
- » Project Updates
 - » Director's Update
 - » Recap: Board Input
- » Highway Infrastructure Design Considerations
- » Restorative Justice Project Value and Board Charter Update
- » Next Steps



7 Principles of Agreement

1. Your voice matters
2. Speak your truth
3. Listen for understanding
4. Deal with issues not with people
5. Experience discomfort
6. Remain respectfully engaged
7. Expect & accept non-closure

PUBLIC COMMENT





Public Comment

- » Raise your hand if you wish to make a public comment
- » Please mute your computer to avoid background noise
- » Focus your comments on today's meeting topics
- » Speakers have up to 1 minute for their comment and will be muted at "time"
- » To provide more extensive comments, see options on page 1 of your agenda

To make a live comment via phone, dial: 971-247-1195

Meeting ID:

893 8304 3856

Passcode: 124184

1. Dial ***9** to raise your hand.
2. After you are invited to speak, dial ***6** to unmute yourself.

PROJECT UPDATES





Director's Update





Recap: Board Input and Questions

- Track Board input, concerns and recommendations
- Determine Board recommendation influence on local agreements
- Support mentorship opportunities for Disadvantaged Business Enterprise Contractors
- Support workforce development by trade (in particular)
- Support college career path educational advocacy opportunities
- Consider *JumpTown* in undercrossing designs
- Consider impacts to houseless people in design treatments
- Activate undercrossings through design (e.g., space for shop stand)

QUESTIONS AND ANSWERS



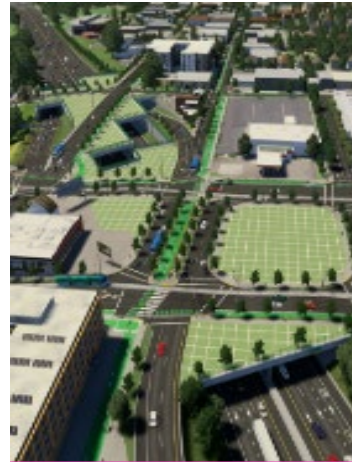
HIGHWAY INFRASTRUCTURE DESIGN CONSIDERATIONS





Project Elements for HAAB Guidance

(revised for Hybrid 3)



Highway Cover



**Multimodal Local
Street
Improvements**



**Highway Transition
Zone Treatments**



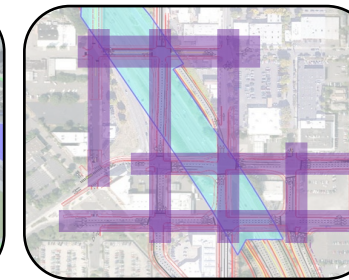
**Highway
Undercrossings**



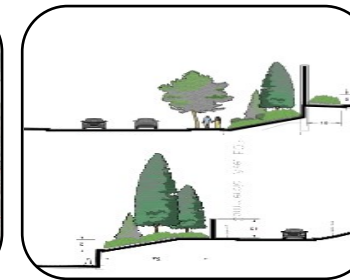
Cover



Streets

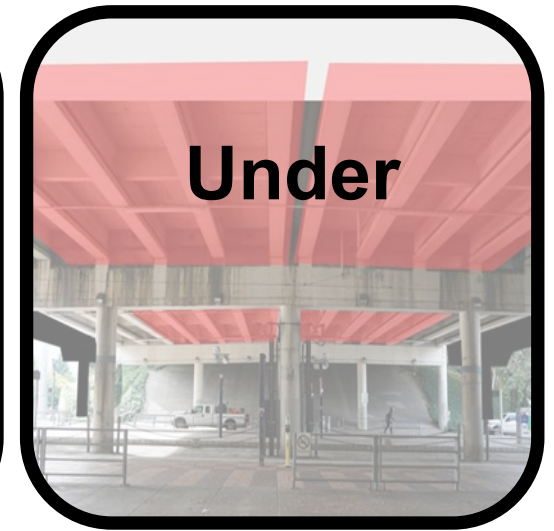
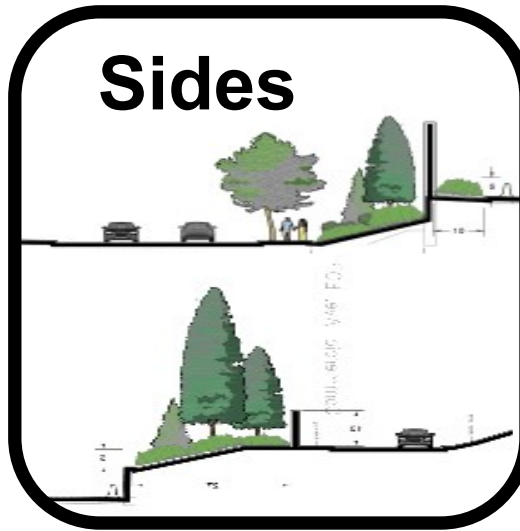


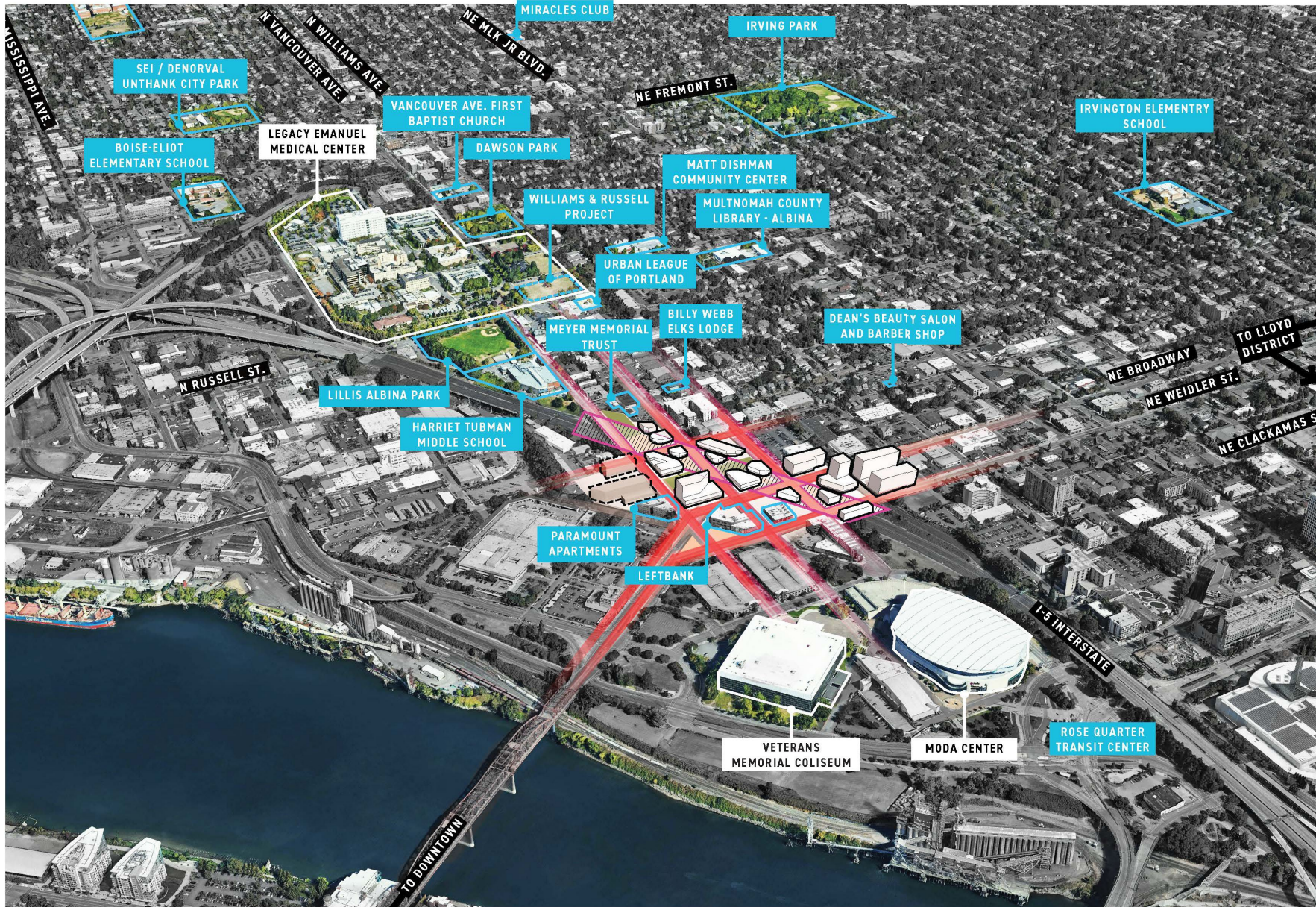
Sides



Under







A NEW GATEWAY AT A HISTORICAL CENTER

The location of the Albina highway cover is important in the context of the Central City. The highway cover is planned at the center of Broadway and Weidler at Williams and Vancouver, a historically important node in Northeast Portland and the Black Historic Albina community neighborhood. Broadway serves as a gateway to the neighborhood and is an important east-west connector between NE Portland and west across the Willamette River.

The location of the highway cover is also an important center in which to restore Black community-oriented services and activities where they historically thrived. The heart of Albina was a commercial, institutional and social spine for the community. The neighborhood was dominated by small-scale streets, and walkable community services were distributed throughout. It can be restored as a crossroads to and from Black community-oriented institutions, churches, community centers, places of work and living, and the location of burgeoning activity led by members of Portland's Black community.

Developing the highway cover at this location can be an opportunity to understand and then address Black community-oriented priorities, form a means for the Black community to own and control land, and provide the resources to cultivate places and activities that serve and meet community aspirations and long-term goals.

The highway cover project can serve as one piece of a larger community effort to reestablish Lower Albina as a center of Black identity and culture in Portland.

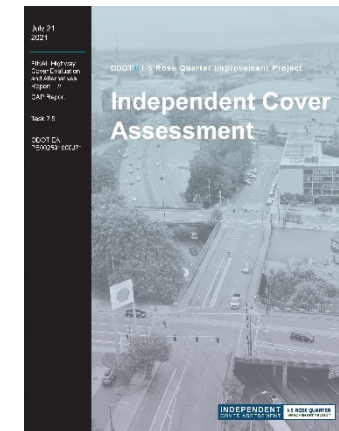


Figure 2: The cover stitches back the land once severed by the highway.



Neighborhood Framework

The Neighborhood Framework is a synthesis of the ideas the community expressed about Lower Albina's future in the public record, in previous plans and in our public engagement process. It describes how community aspirations can be supported within a physical design framework, congruent with the Central City 2035 Plan.

The Neighborhood Framework includes the Black Historic Albina community's top ten program priorities for community wealth, health, and cohesion on and around the cover. It proposes principles to organize surface streets, blocks, and land for development, while considering exposure to air and noise pollution. It identifies the role of important streets and places across the highway cover. In so doing, it establishes how development, open space, and design elements would work together to ensure that the connections and the continuity of experience along those connections can sustain the community's vision in this neighborhood. It is part of the road map for aiding participation by ODOT, the City of Portland, and other stakeholders necessary for developing in Portland's Central City.

This Neighborhood Framework should be used as a guide for future development decisions to achieve the community's envisioned outcomes.

"We want it all-and it's just a small portion of what we deserve."

— COMMUNITY MEMBER

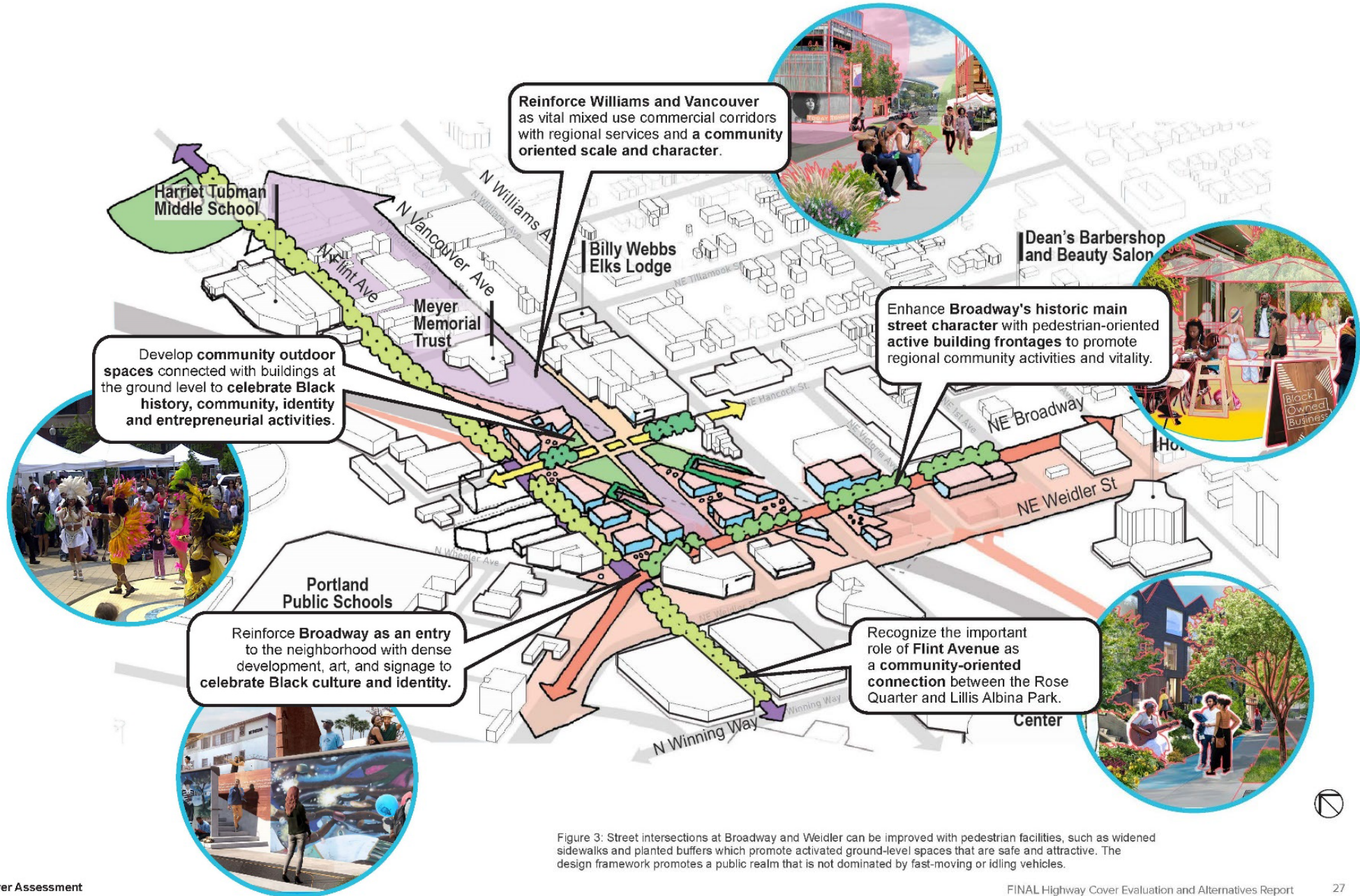
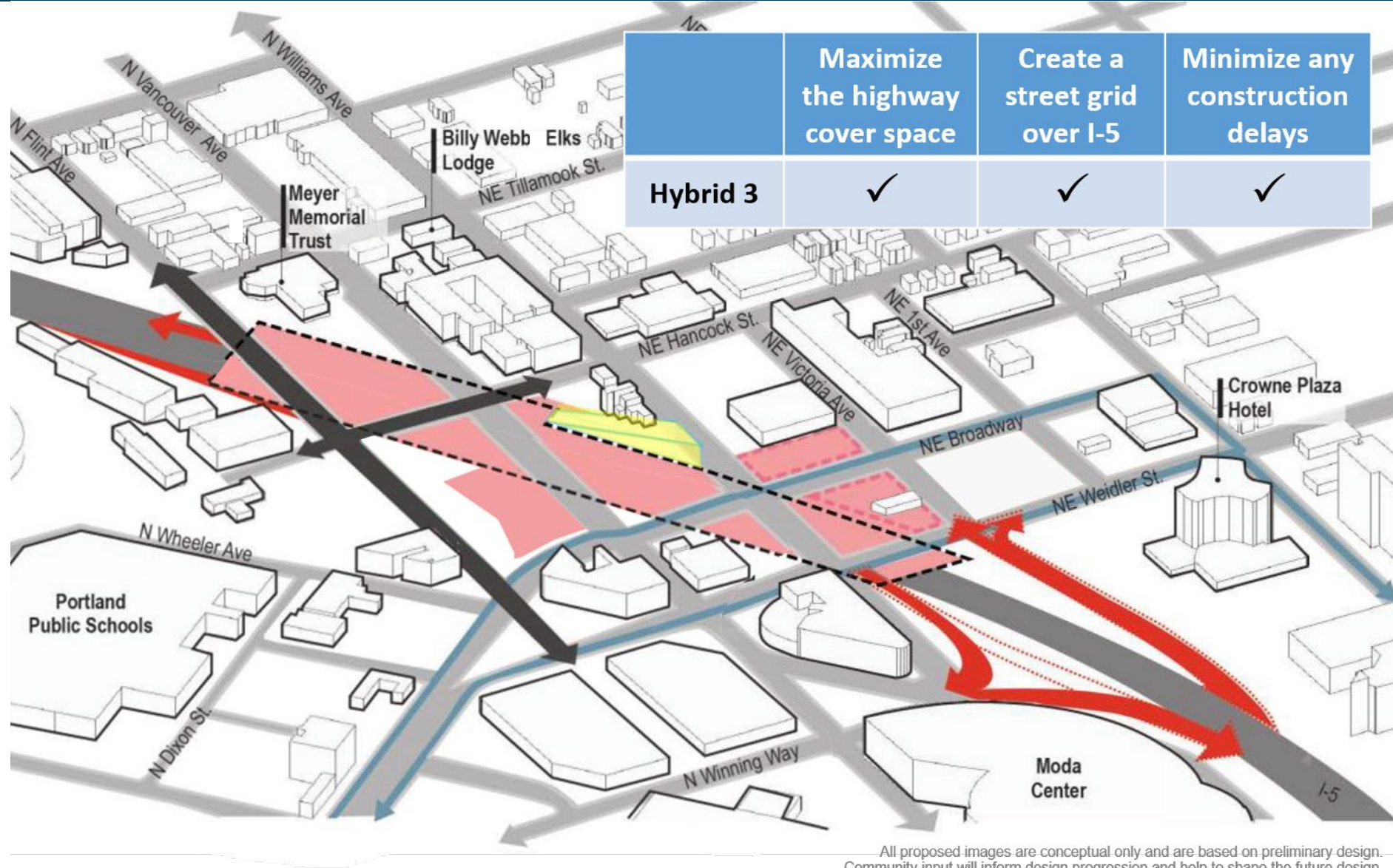


Figure 3: Street intersections at Broadway and Weidler can be improved with pedestrian facilities, such as widened sidewalks and planted buffers which promote activated ground-level spaces that are safe and attractive. The design framework promotes a public realm that is not dominated by fast-moving or idling vehicles.



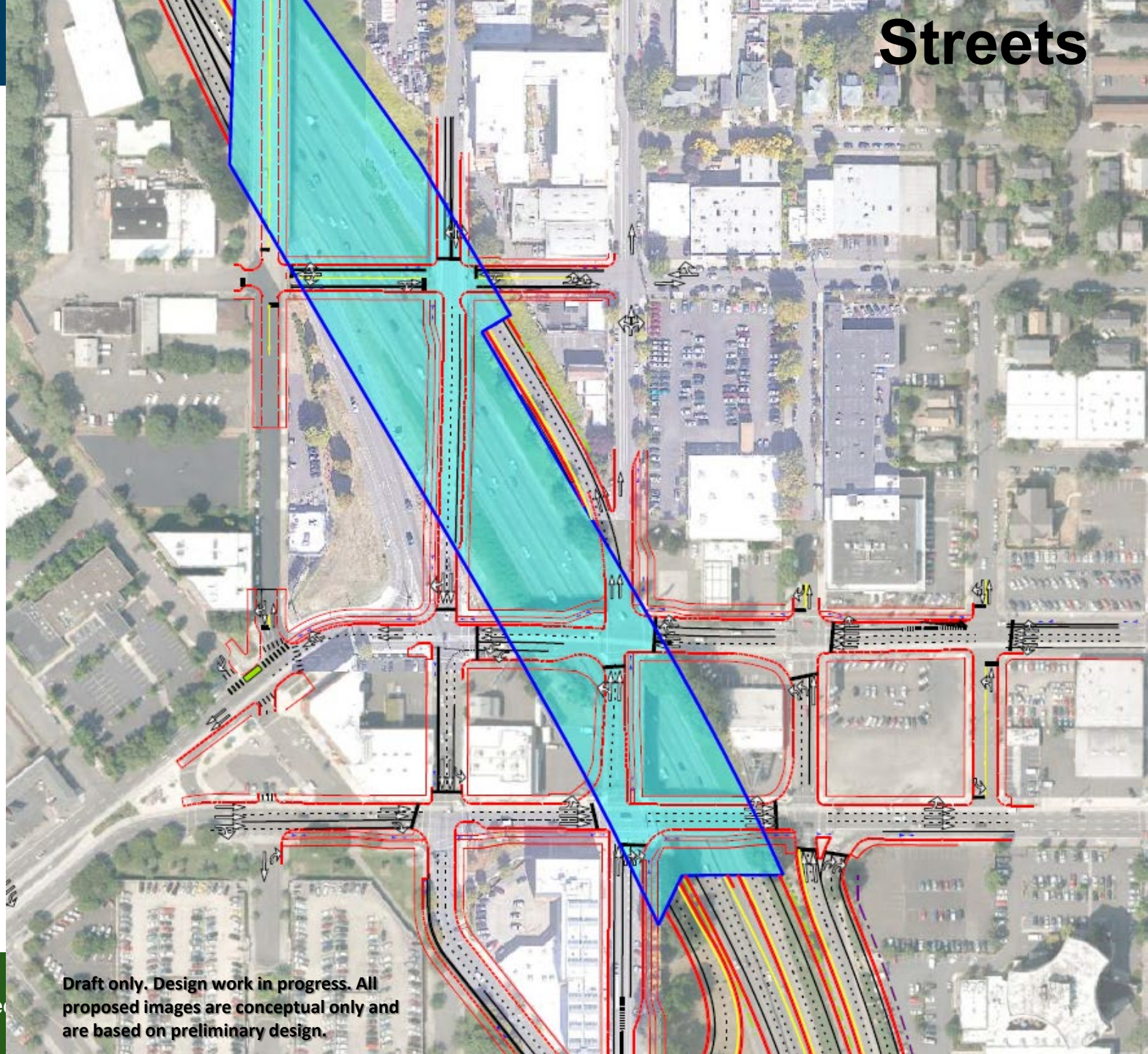
All proposed images are conceptual only and are based on preliminary design. Community input will inform design progression and help to shape the future design.



Multimodal Streets

(revised for Hybrid 3)

Streets



Draft only. Design work in progress. All proposed images are conceptual only and are based on preliminary design.



N Williams Avenue

Pedestrian classification

Major City Walkway

Bicycle classification

Major City Bikeway

Transit classification

Major Transit Priority Street

Freight classification

Local Service Truck Street

Design classification

Neighborhood Main Street

Emergency classification

Major Emergency Response

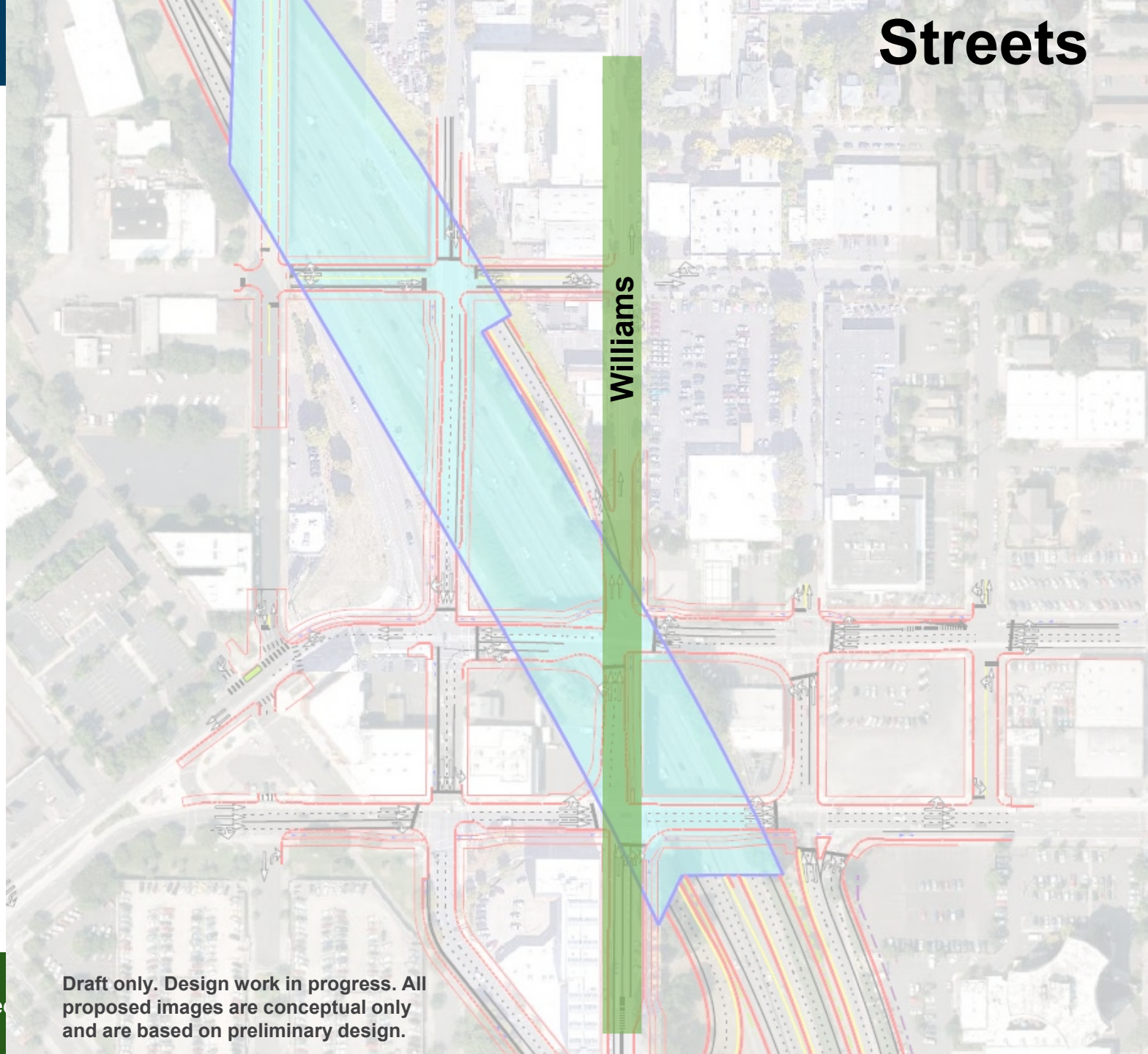
Traffic classification

Traffic Access Street (CCTMP only)

Greenscape classification

No

Streets



Draft only. Design work in progress. All proposed images are conceptual only and are based on preliminary design.



N Vancouver Avenue

Pedestrian classification

Major City Walkway

Bicycle classification

Major City Bikeway

Transit classification

Major Transit Priority Street

Freight classification

Local Service Truck Street

Design classification

Neighborhood Corridor

Emergency classification

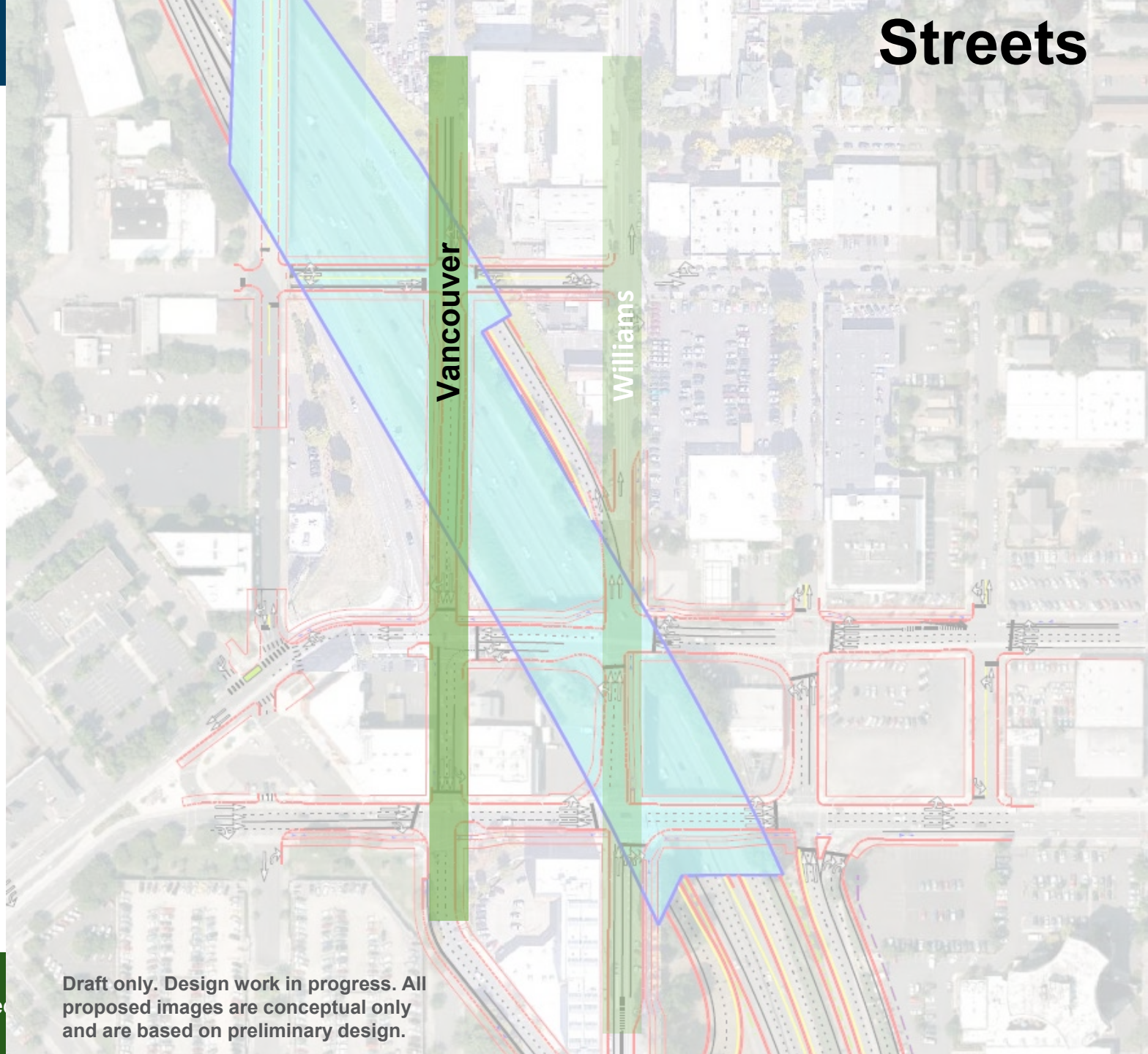
Major Emergency Response

Traffic classification

Traffic Access Street (CCTMP only)

Greenscape classification

No



Draft only. Design work in progress. All proposed images are conceptual only and are based on preliminary design.



N Flint Avenue

Pedestrian classification

City Walkway

Bicycle classification

City Bikeway

Transit classification

Local Service Transit Street

Freight classification

Local Service Truck Street

Design classification

Local Street

Emergency classification

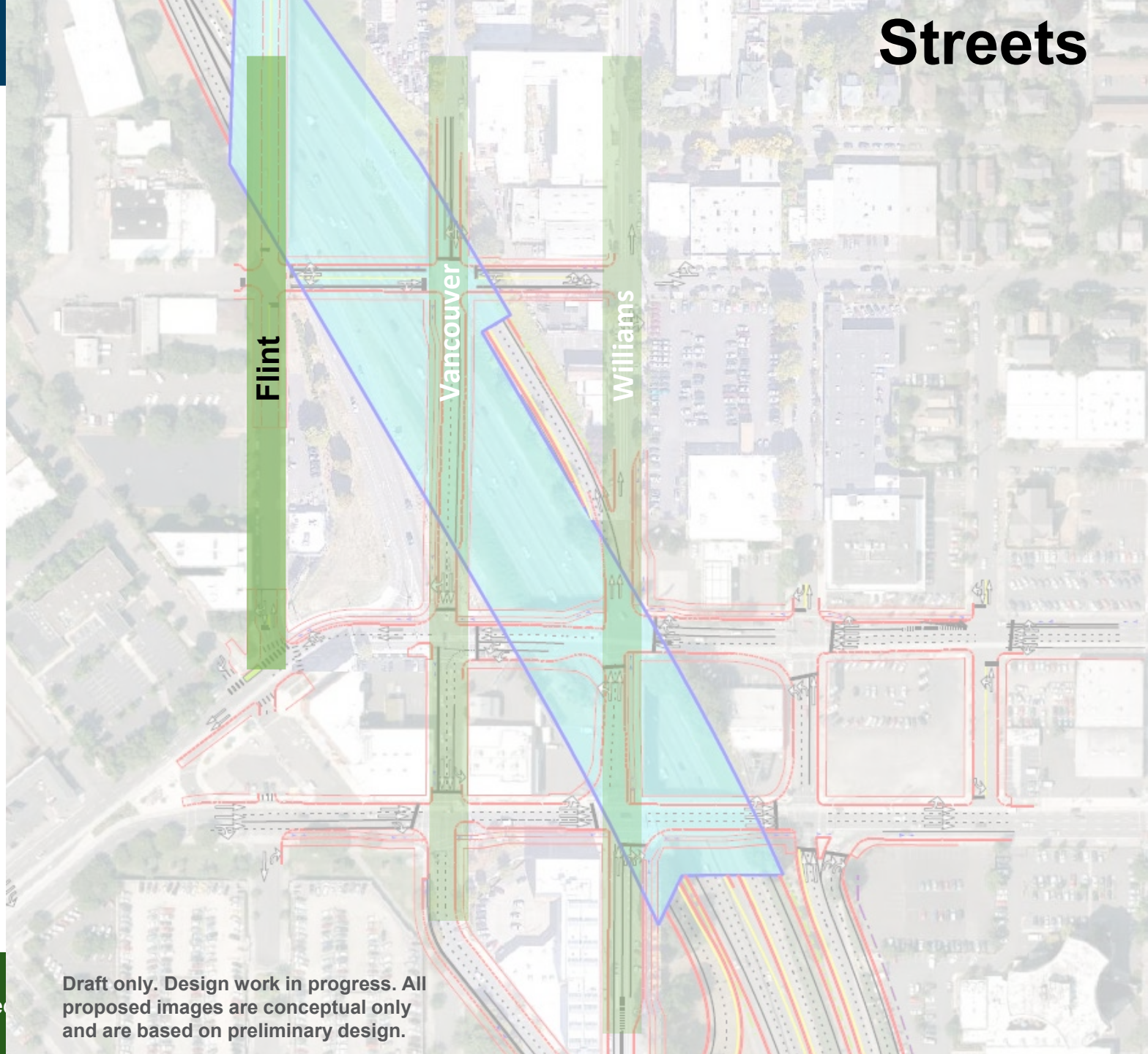
Major Emergency Response

Traffic classification

Local Service Traffic Street

Greenscape classification

No



Draft only. Design work in progress. All proposed images are conceptual only and are based on preliminary design.



NE Victoria Avenue

Pedestrian classification

Local Street

Bicycle classification

Local Service Bikeway

Transit classification

Local Service Transit Street

Freight classification

Local Service Truck Street

Design classification

Local Street

Emergency classification

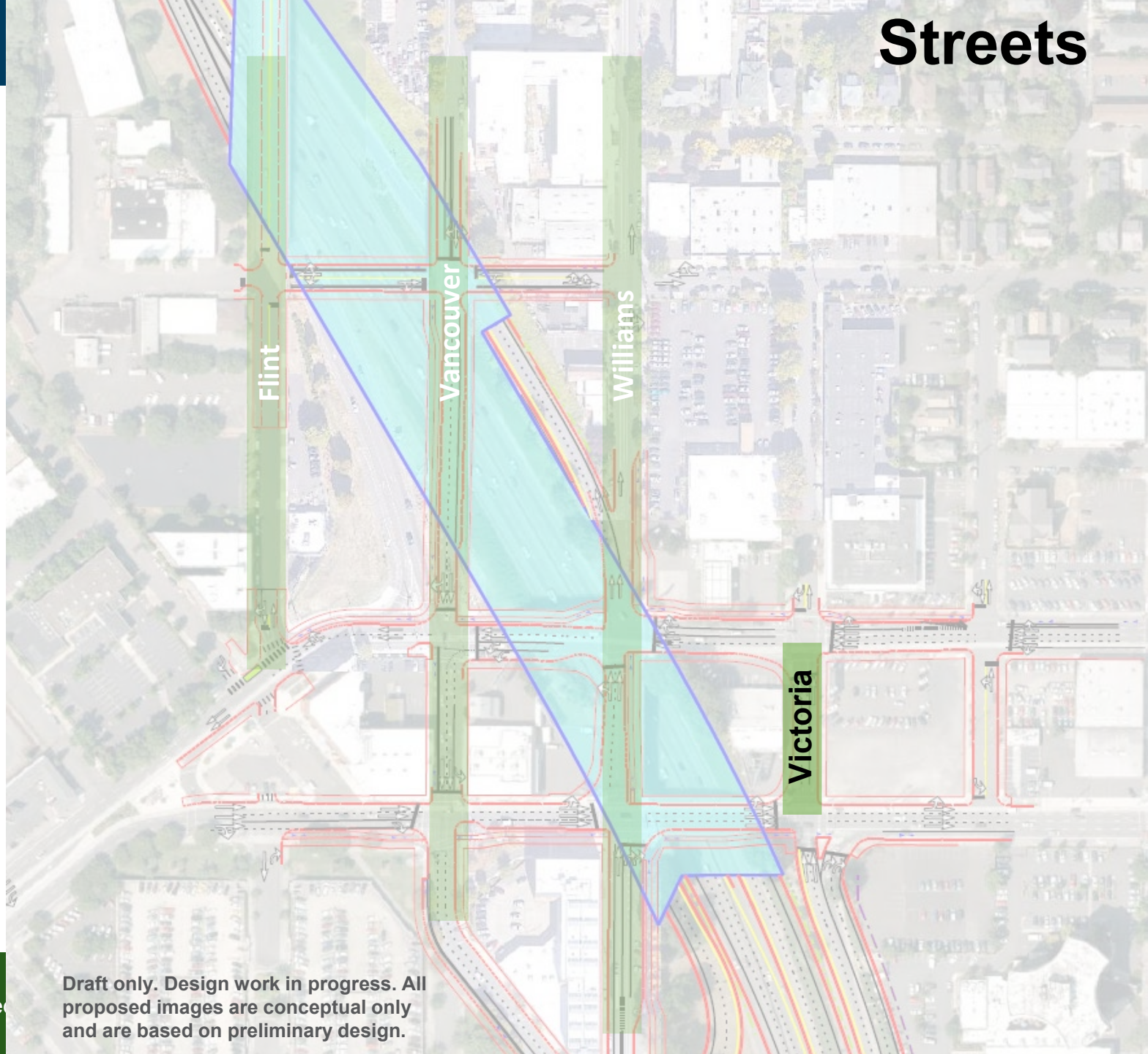
Minor Emergency Response

Traffic classification

Local Service Traffic Street

Greenscape classification

No



Draft only. Design work in progress. All proposed images are conceptual only and are based on preliminary design.



N Broadway

Pedestrian classification

Major City Walkway

Bicycle classification

Major City Bikeway

Transit classification

Major Transit Priority Street

Freight classification

Major Truck Street

Design classification

Civic Main Steet

Emergency classification

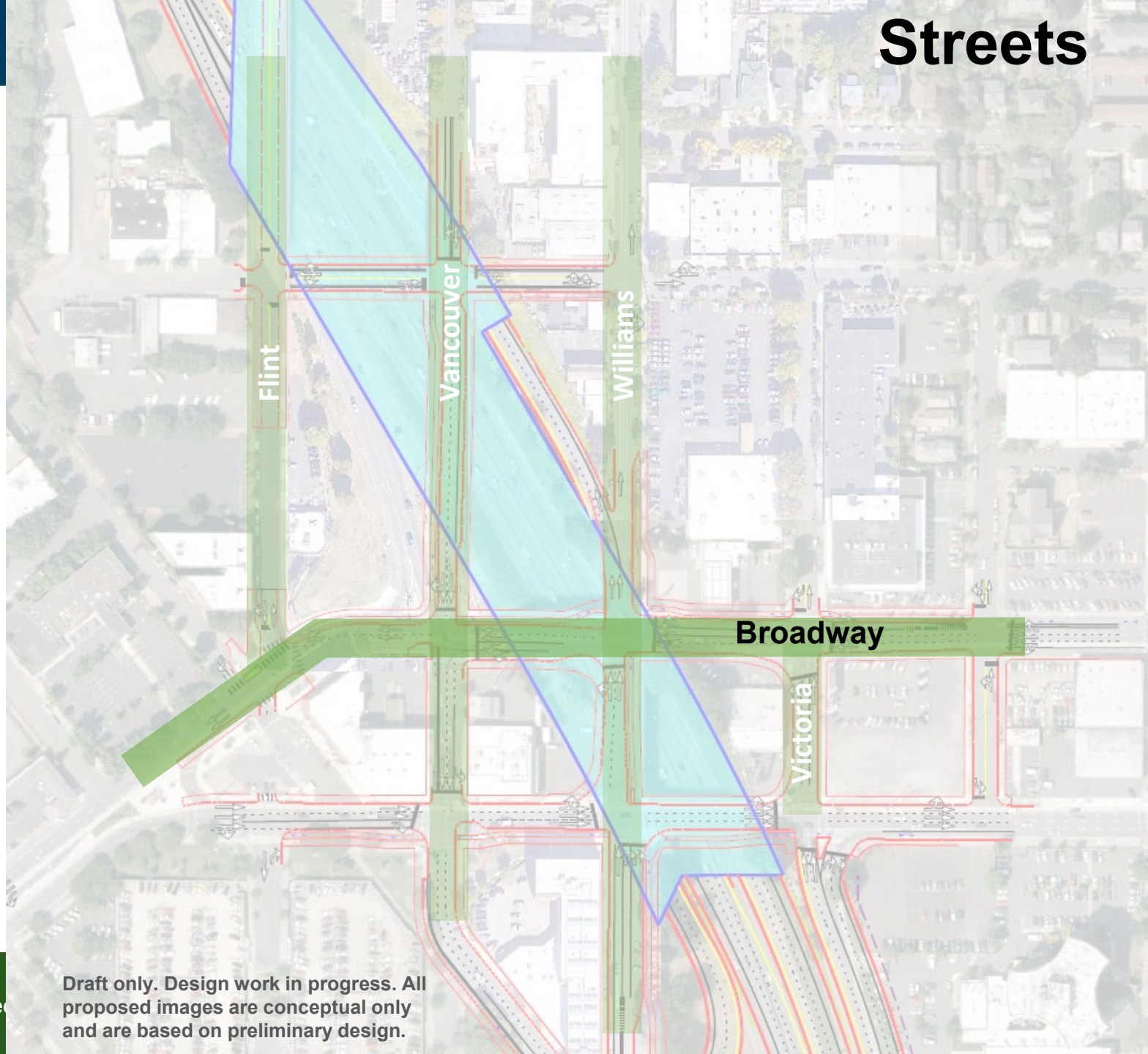
Major Emergency Response

Traffic classification

Major City Traffic Street

Greenscape classification

No



Draft only. Design work in progress. All proposed images are conceptual only and are based on preliminary design.



N Weidler Street

Pedestrian classification

Major City Walkway

Bicycle classification

Major City Bikeway

Transit classification

Major Transit Priority Street

Freight classification

Major Truck Street

Design classification

Civic Corridor

Emergency classification

Major Emergency Response

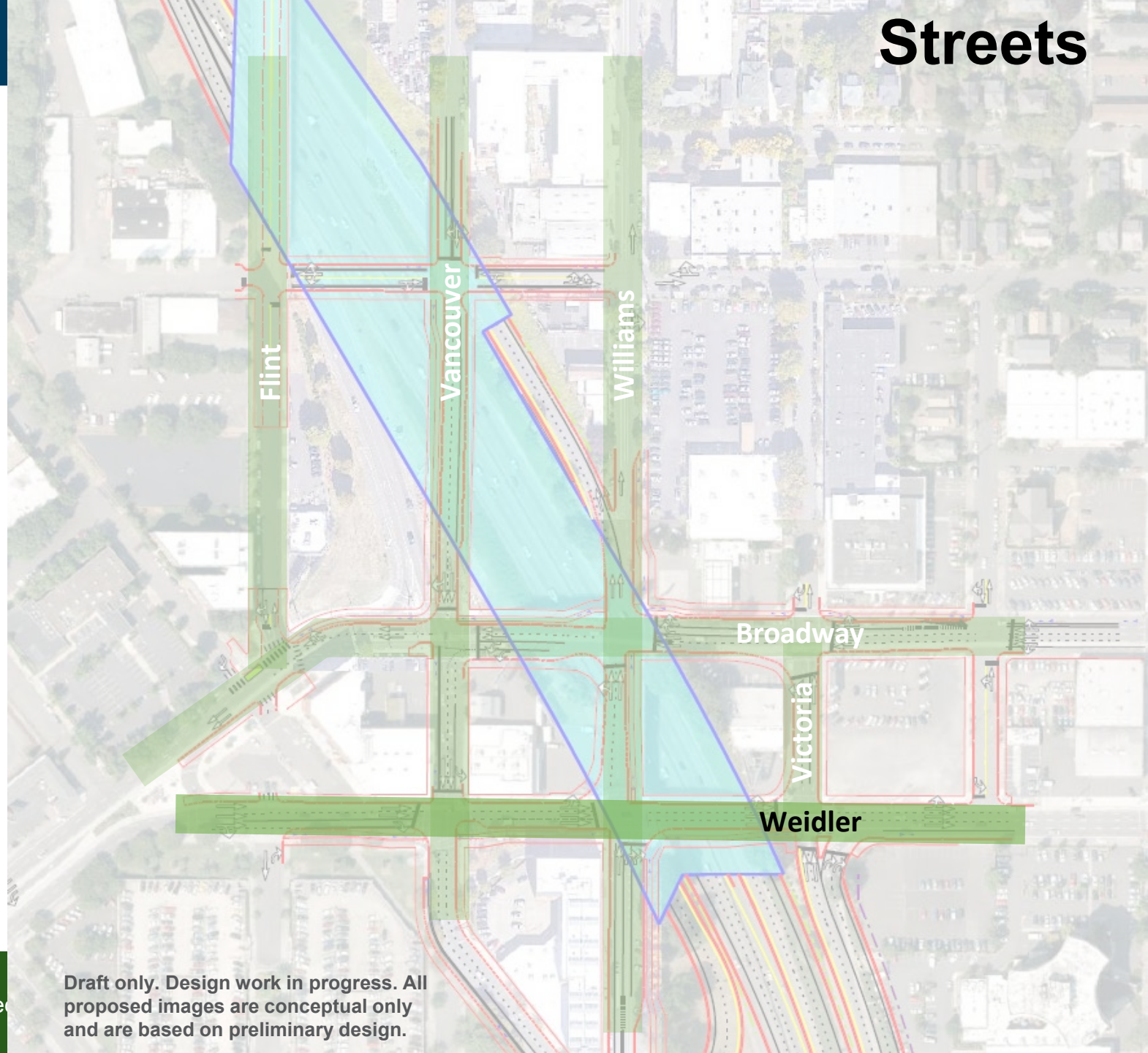
Traffic classification

Major City Traffic Street

Greenscape classification

No

Streets



Draft only. Design work in progress. All proposed images are conceptual only and are based on preliminary design.



N Hancock Street

Pedestrian classification

Neighborhood Walkway

Bicycle classification

Local Service Bikeway

Transit classification

Local Service Transit Street

Freight classification

Local Service Truck Street

Design classification

Local Street

Emergency classification

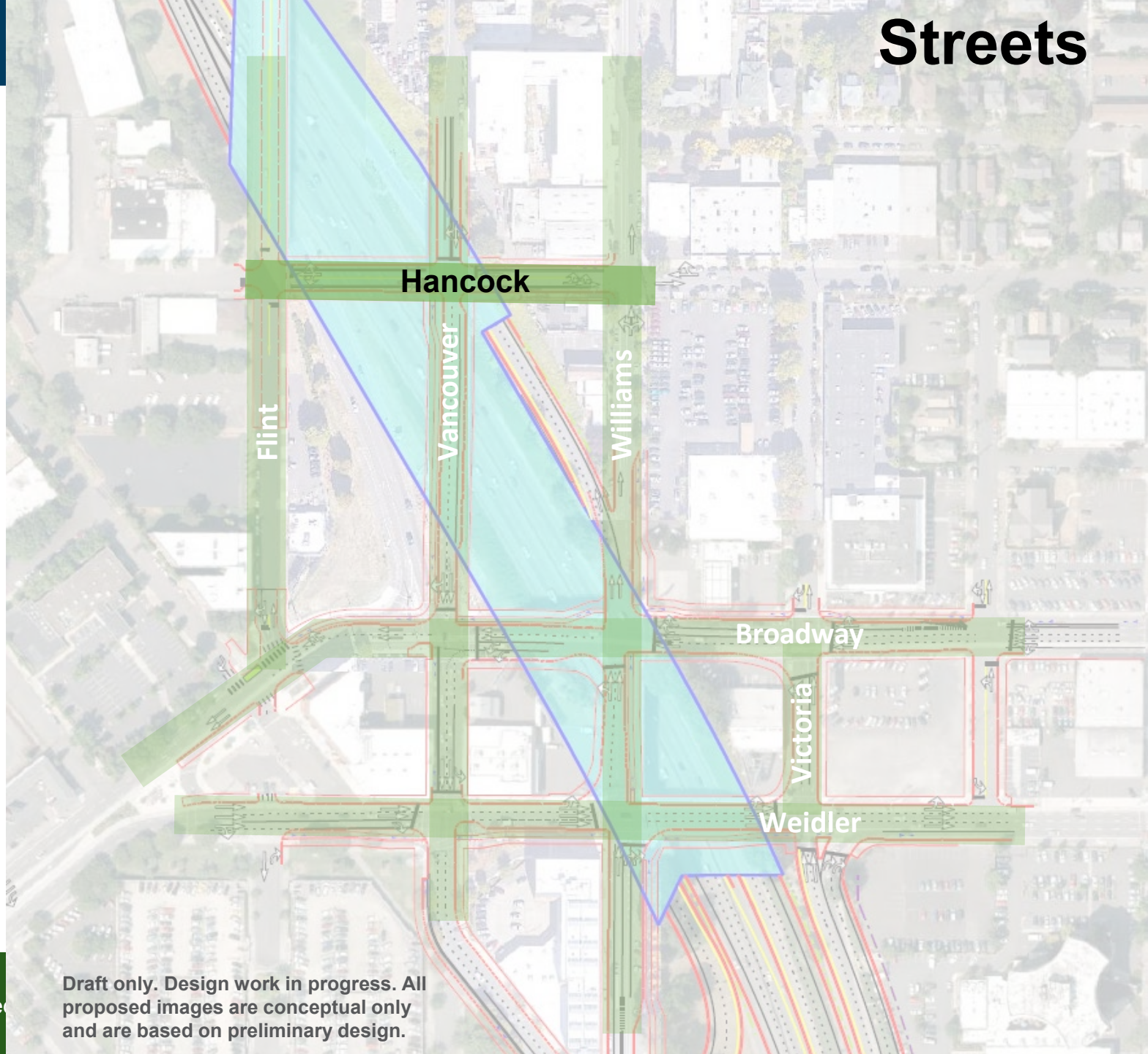
Minor Emergency Response

Traffic classification

Local Service Traffic Street

Greenscape classification

No

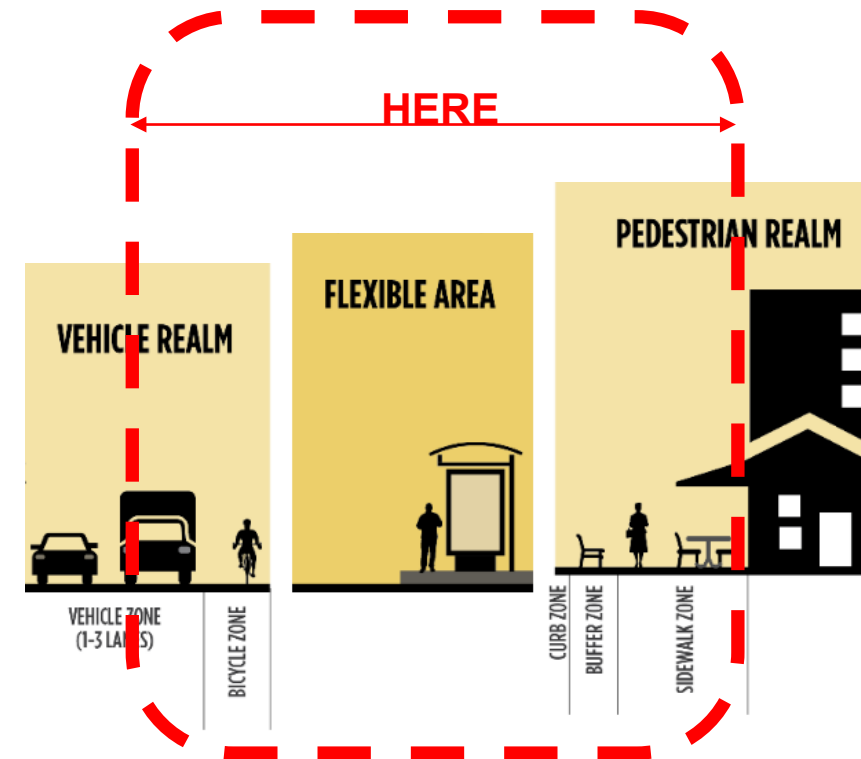


Draft only. Design work in progress. All proposed images are conceptual only and are based on preliminary design.



Elements of the public realm on streets that we will focus on together.

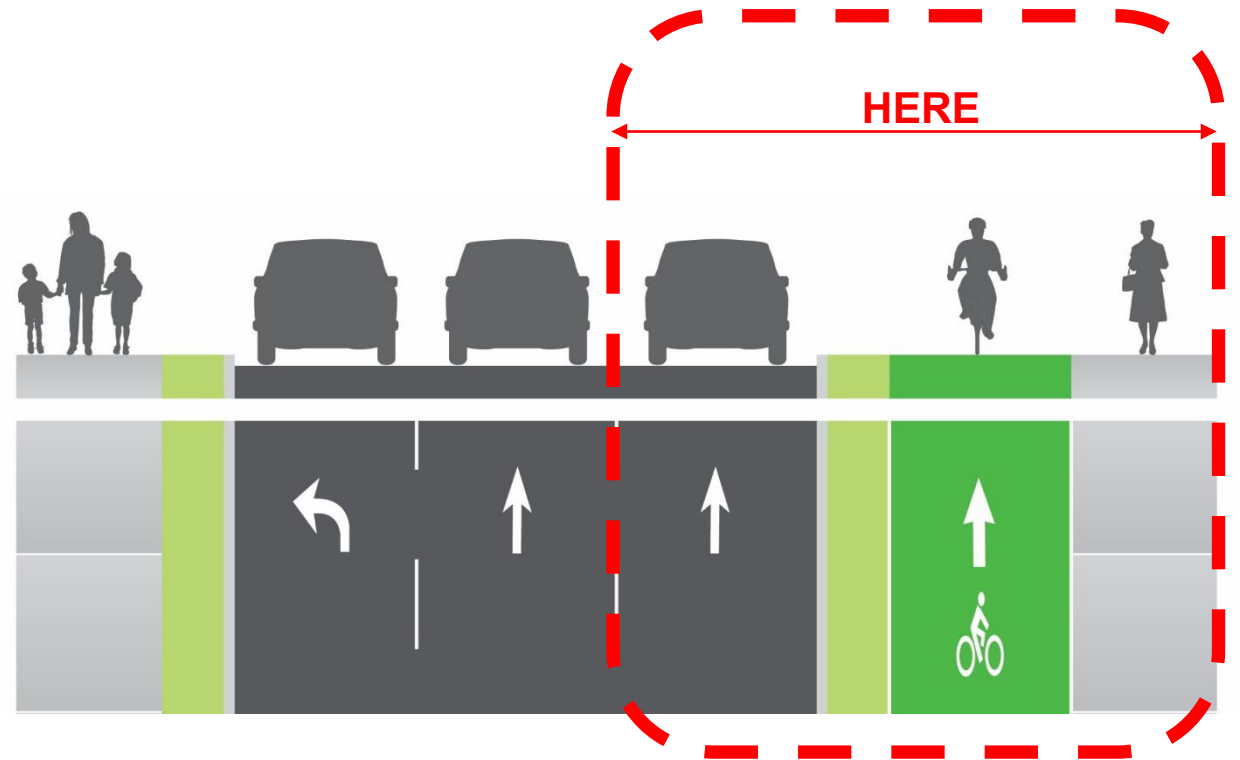
- › **Pedestrian facilities and character:**
sidewalk material and width, crossings, lighting, signage, furnishings, street trees, placement and relation to the street
- › **Transit facilities:**
stop design and amenities, placement and relation to the street and signal and street priority elements
- › **Bicycle facility design and placement**
- › **Development-supportive frontages:**
on-street and accessible parking, loading or drop-off zones, extend, and activation and relation to the streetscape





Elements of the public realm on streets that we will focus on together.

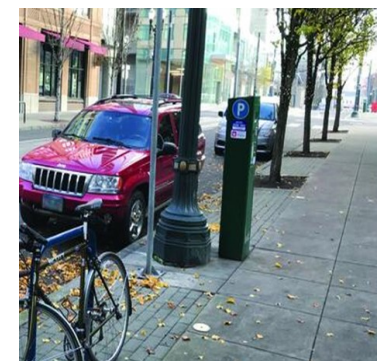
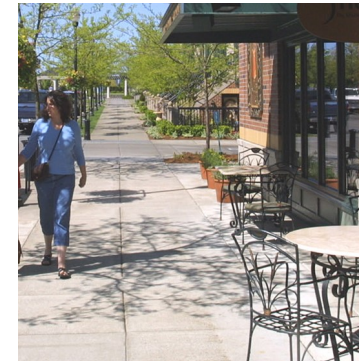
- › **Pedestrian facilities and character:**
sidewalk material and width, crossings, lighting, signage, furnishings, street trees, placement and relation to the street
- › **Transit facilities:**
stop design and amenities, placement and relation to the street and signal and street priority elements
- › **Bicycle facility design and placement**
- › **Development-supportive frontages:**
on-street and accessible parking, loading or drop-off zones, extend, and activation and relation to the streetscape





Elements of the public realm on streets that we will focus on together.

- › **Pedestrian facilities and character:**
sidewalk material and width, crossings, lighting, signage, furnishings, street trees, placement and relation to the street
- › **Transit facilities:**
stop design and amenities, placement and relation to the street and signal and street priority elements
- › **Bicycle facility design and placement**
- › **Development-supportive frontages:**
on-street and accessible parking, loading or drop-off zones, extend, and activation and relation to the streetscape



Streets



We will work together on the expression of the **Green Loop** within the project area



Undercrossings Modified in the Project

N Russell Street

NE Multnomah Street

NE Holladay Street
(aka Rose Quarter Transit Center)

NE Lloyd Boulevard



What Did We Hear?

- You are interested in exploring ideas of how to make these places **superb** and **safe**.
- You want to explore all under-crossings **equally**, not ready to prioritize or de-prioritize any.
- You are interested in the **best solutions** and ideas happening from **around the world** not just in Oregon.



N Russell Street

- Explore at least 2 options
- Improve the “hallway” pass-through experience
- Embrace a larger underside area for movement and play



Under



Under



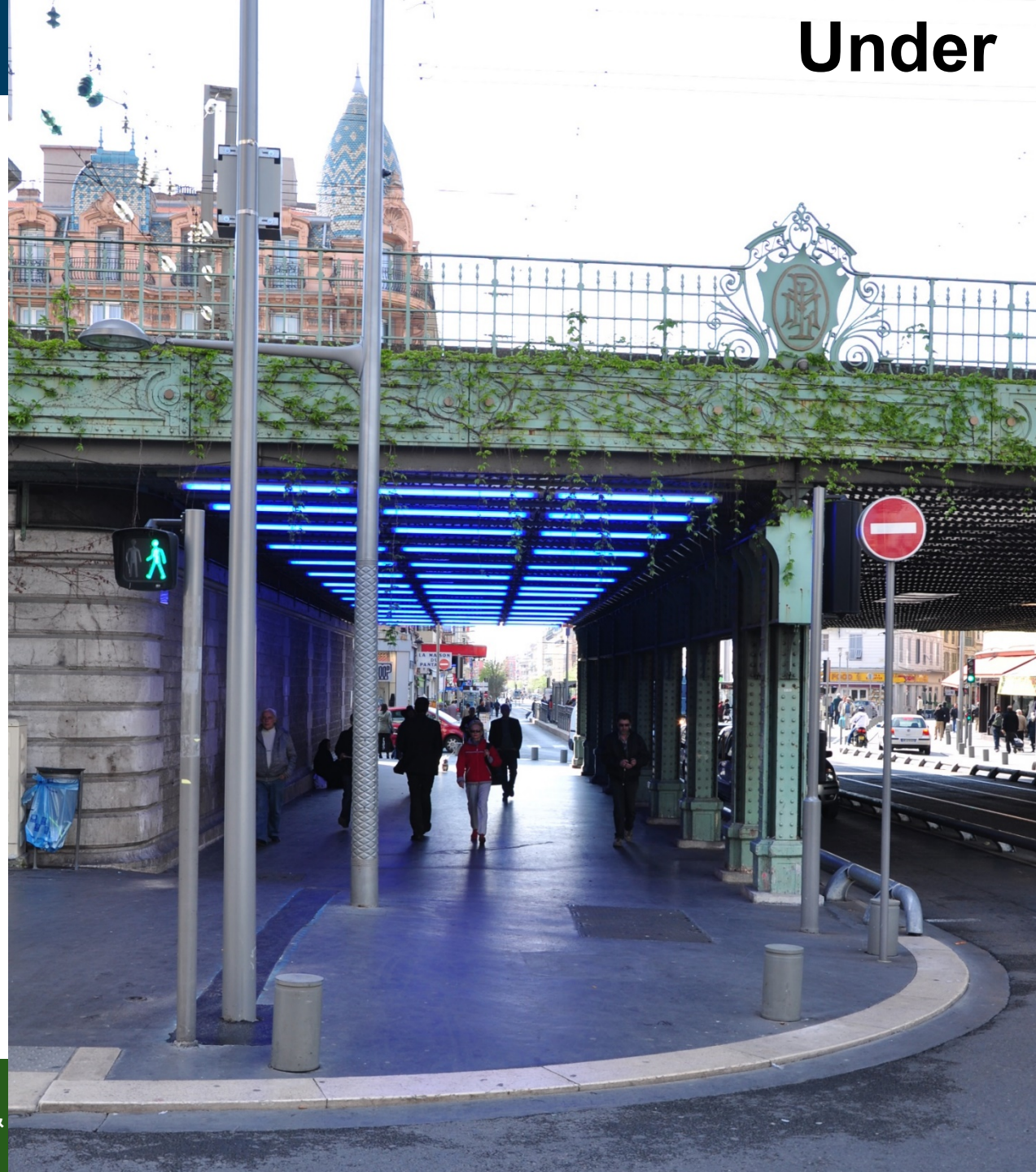


NE Multnomah Street

- Build on the work developed during the **JumpTown** proposal for Rose Quarter redevelopment
- Improve the “hallway” and pass-through experience



Under



&



GODSCHIEPDE
REGENBOGEN
KOOGENWEESH
ETPADVOORWI
EHETOOGNIET
OPZICHELFG
ERICHTHOUDT
MAAROPBUURS
CHAPNAASTEN
LIEFDENIETO
PWELVAART
AROPWEL

WIJNDENWATER
MAARDEWIND
ETMEESTWANT
HOEDIEWINST
WERDINDEWIE
KSLAGLANGSH
ETWATERKIEL
HOUTLINZAA
DGRAANAAND
OEGVOORKAPE
RVLOOTENSTI
ETSELVRAGEN

DA
NS
HE
TO
RU
ER
DE
EI
AN
WE

V
ET
P
O
N
I
S
S
E
E
S
T
A

Under

NE Holladay Street Rose Quarter Transit Center



Enriching the transit waiting experience and adding commercial activity and opportunity where the most people will already be

Under

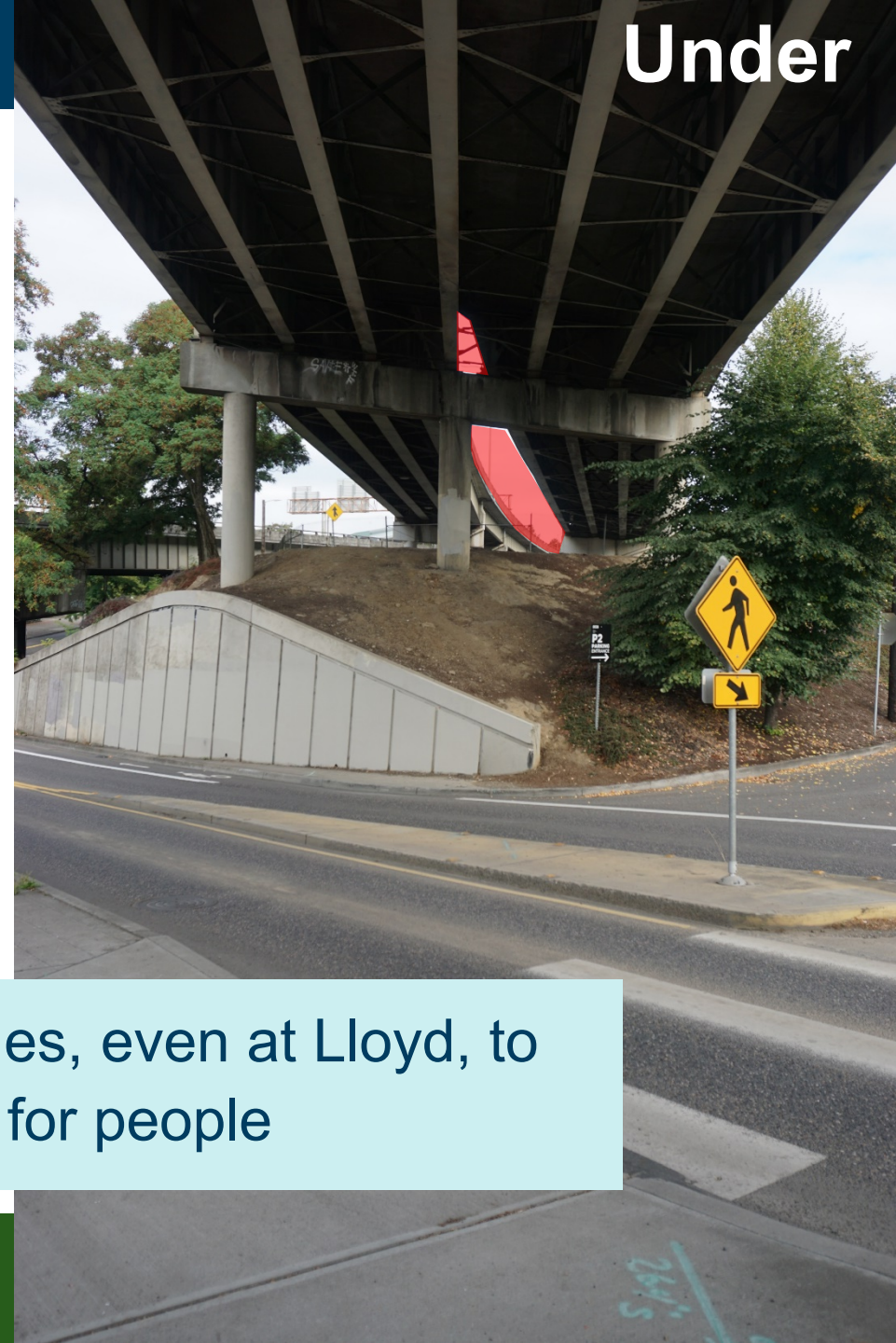
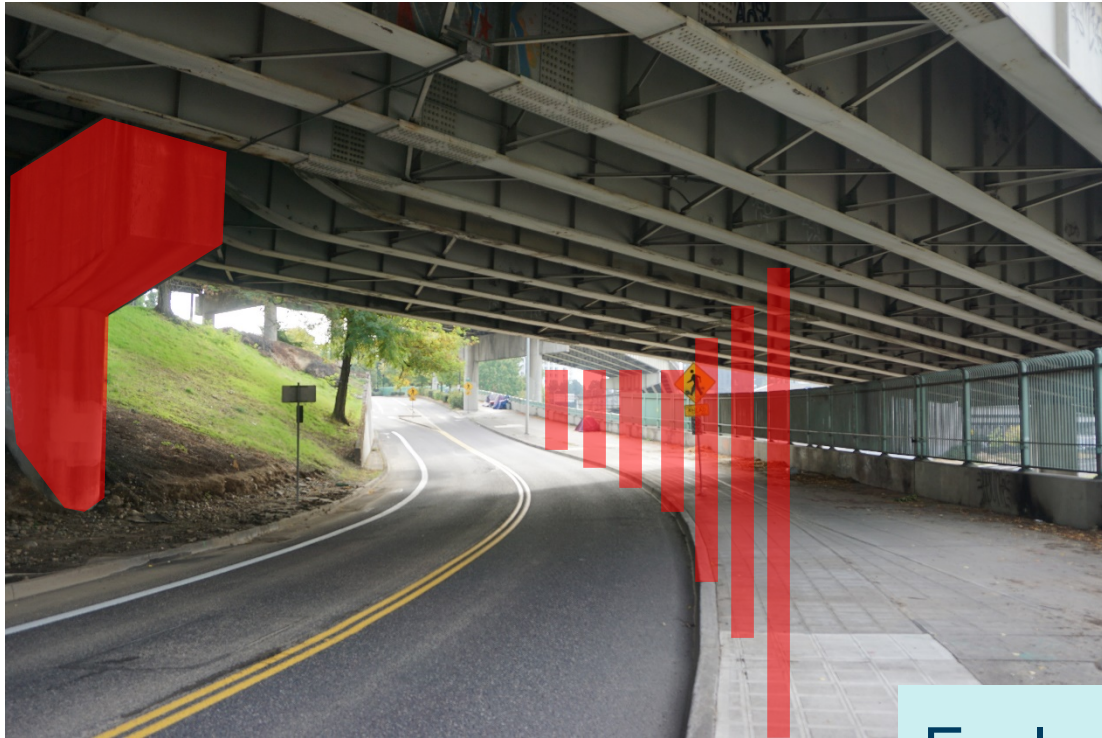


Under





NE Lloyd Boulevard



Explore all possibilities, even at Lloyd, to make a better place for people



477

Before I die I die...

- Before I die I want to *have sex w/ a tom cat*
- Before I die I want to *LIVE A TRASHY LIFE*
- Before I die I want to *Get Back to LOVE!*
- Before I die I want to *LOVE MYSELF*
- Before I die I want to *Live My Life to the fullest*
- Before I die I want to *FIND TRUE LOVE & MARRY*
- Before I die I want to *SAVE THE WORLD*
- Before I die I want to *HAVE GOOD SEX AND DRINK BEER*

DOLE'S





NE Oregon Street



- Additional undercrossing to be considered equally with the others
- Located between Rose Quarter Transit Center and NE Lloyd Boulevard

Did we hear you correctly?



We can work more collaboratively, together.

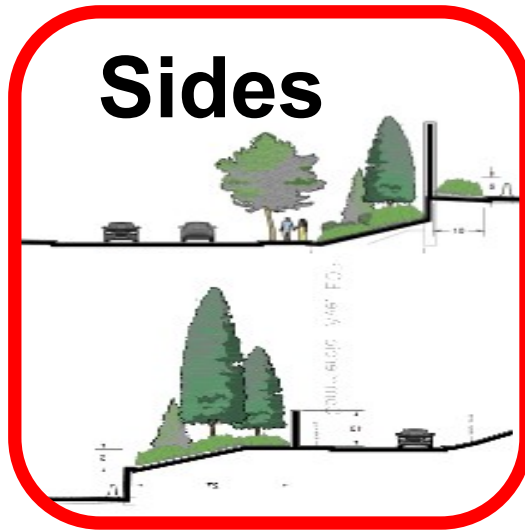
- More time with you to collaborate, listen and learn on wide variety of urban design topics
- Virtual, for now, so we'll utilize some easy tools to support our collaboration
- Working time together, like “office hours”, NOT more presentations from us to you
- A loose agenda driven by “walk-in” interests and topics from members and the Board workplan

Design Collaboration Forums

- **Who:** Board members and Project Team
- **What:** 90-minute work sessions
- **When:** 1st week of the month
Day and time TBD
- **Where:** Virtual Meeting (for now)

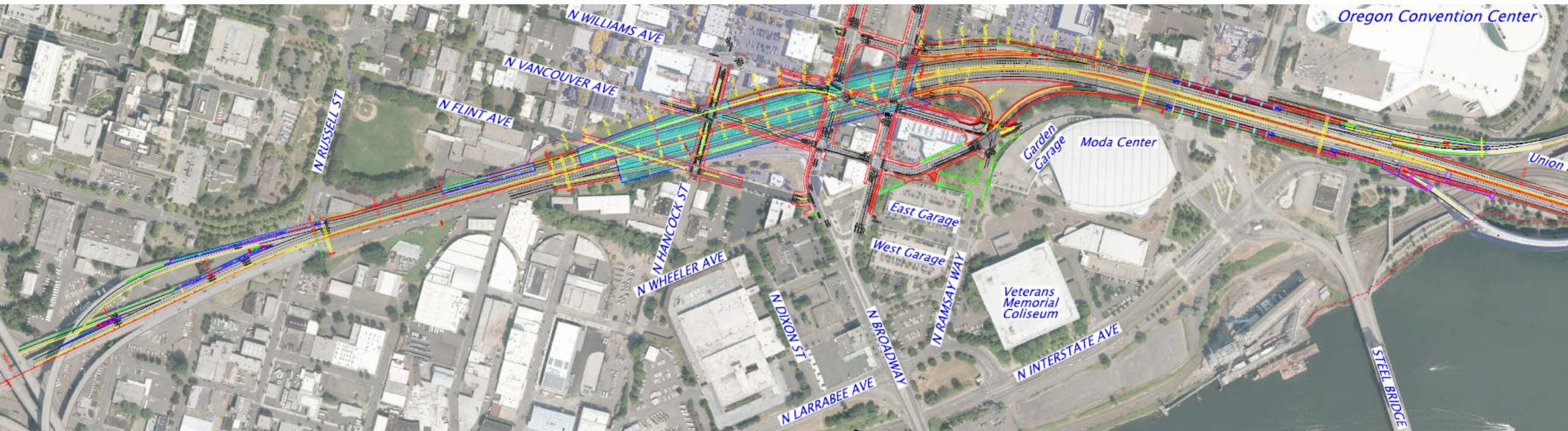
HIGHWAY EDGES AS EXPRESSION





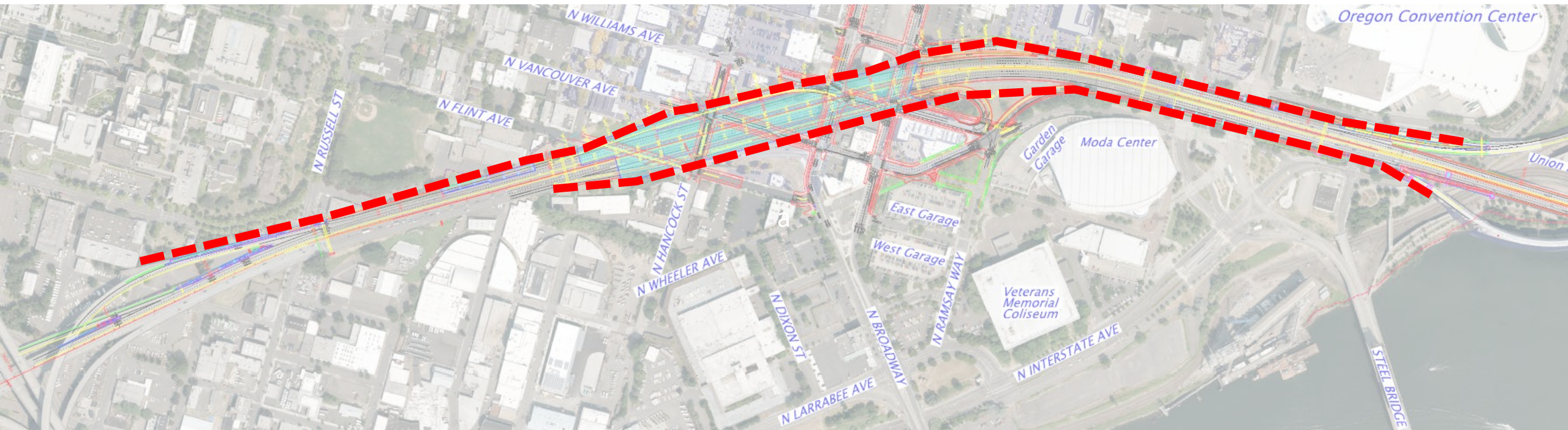


This is generally a long, thin project...





...so the sides matter to how the project feels when built.



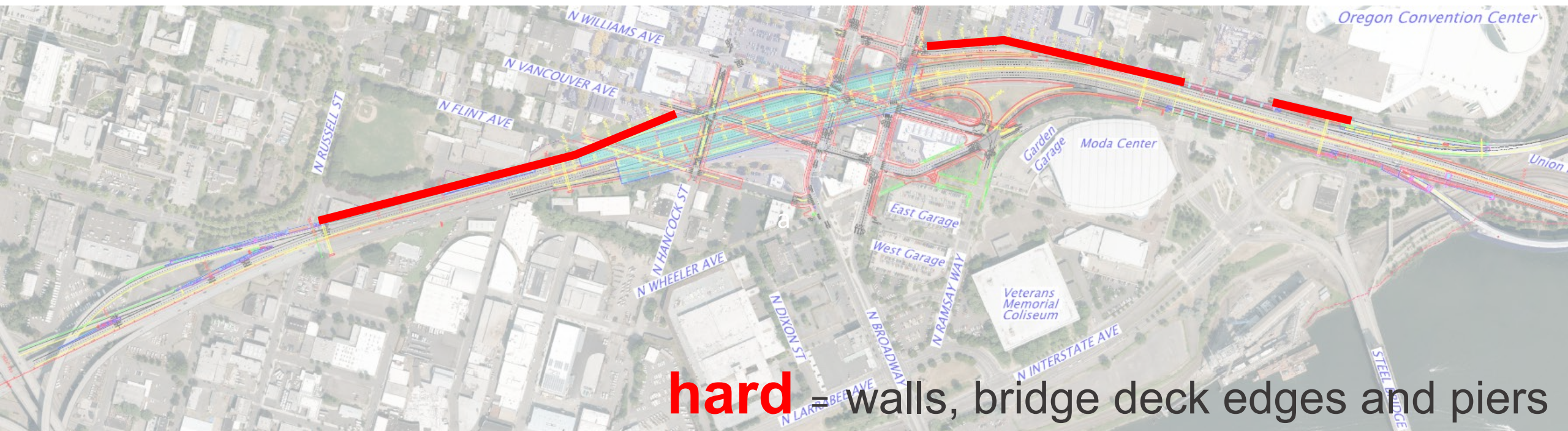


There are two primary edge conditions...



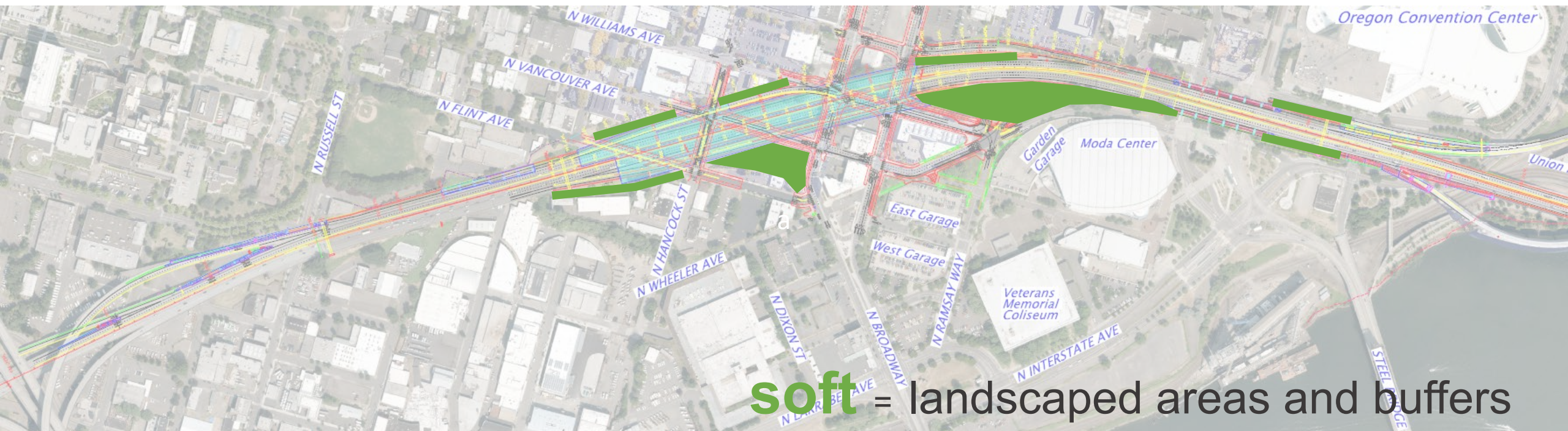


There are two primary edge conditions...



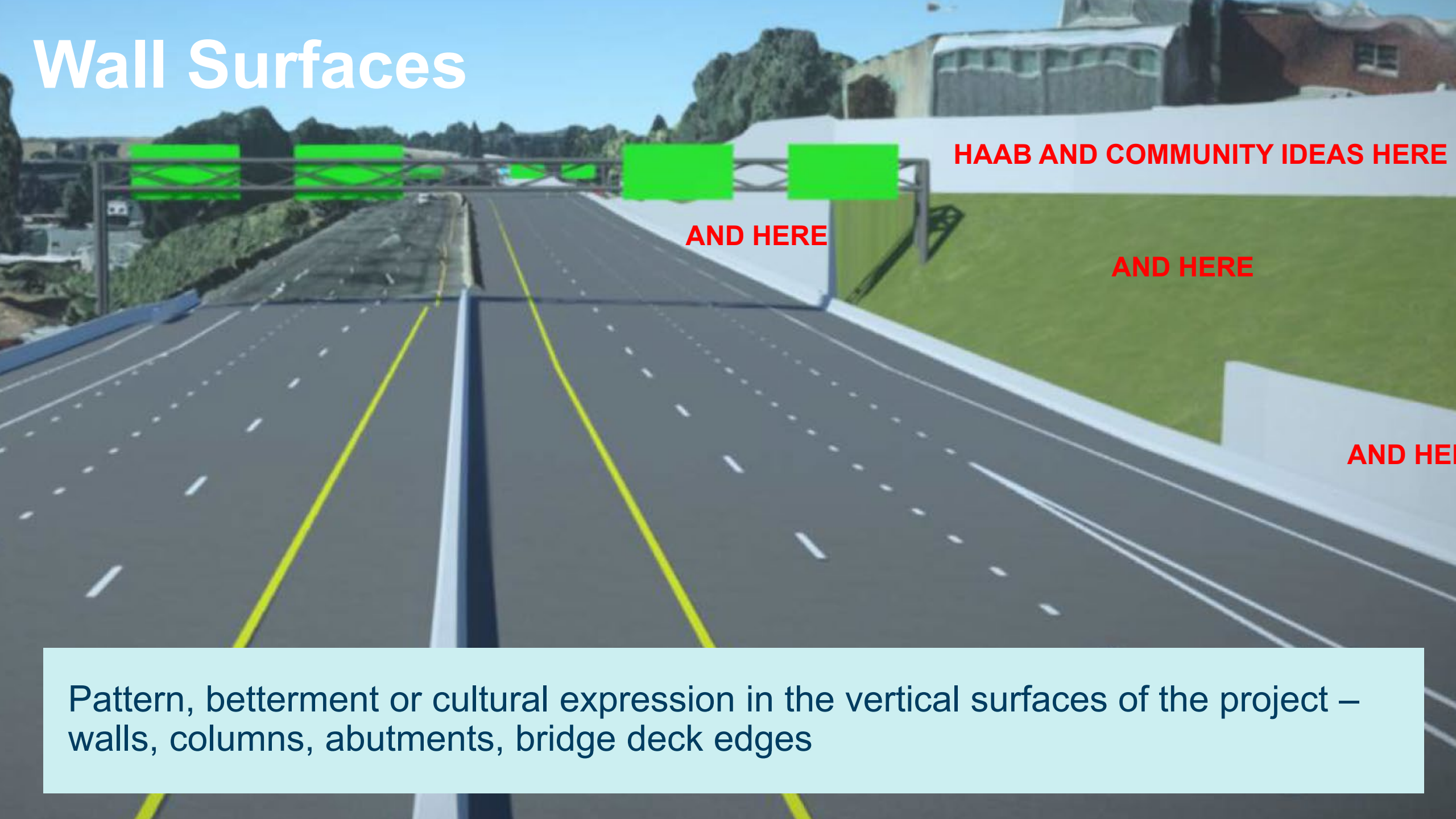


There are two primary edge conditions...



soft = landscaped areas and buffers

Wall Surfaces



HAAB AND COMMUNITY IDEAS HERE

AND HERE

AND HERE

AND HERE

Pattern, betterment or cultural expression in the vertical surfaces of the project – walls, columns, abutments, bridge deck edges

Wall Surfaces



Wall Surfaces



Wall Surfaces

AND HERE

HAAB AND COMMUNITY IDEAS HERE

Pattern, betterment or cultural expression in the vertical surfaces of the project – walls, columns, abutments, bridge deck edges

Wall Surfaces





Walls and landscapes, together



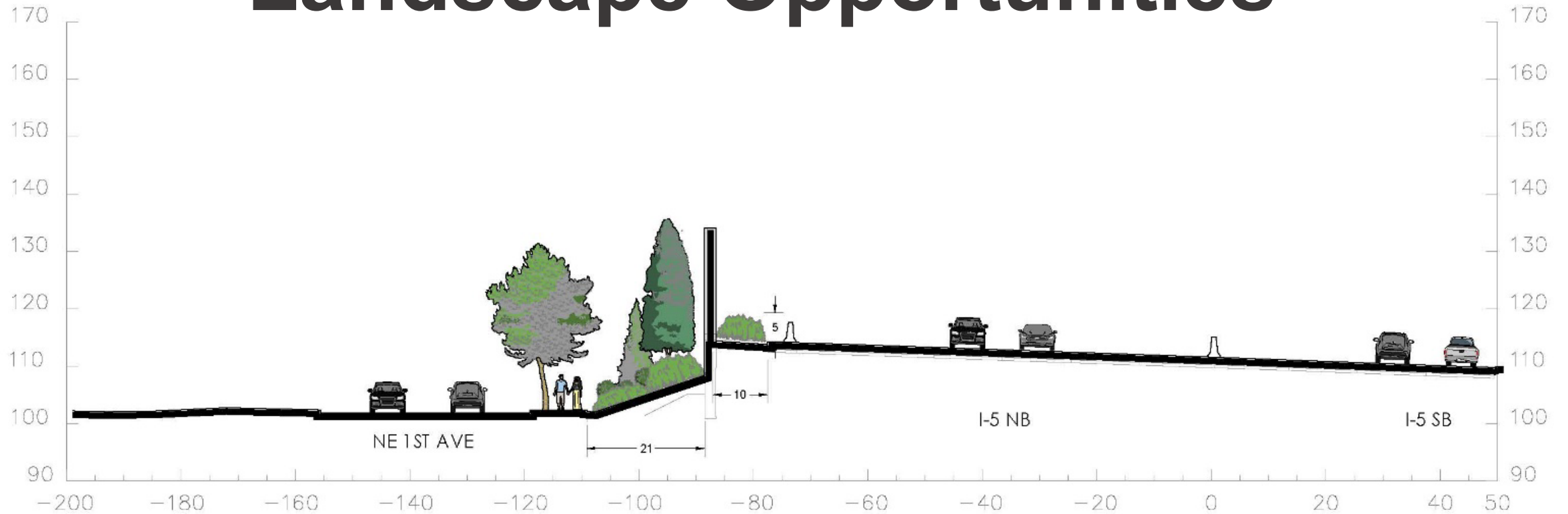


Landscape Opportunities





Landscape Opportunities





Portals







SUPPORT WOMEN

Structural Surfaces

**PATTERNS AND MORE
HERE**

Pattern, betterment or cultural expression in the vertical surfaces of the project – walls, columns, abutments, bridge deck edges



Sides



Are you interested in working more together on these major walls, overall infrastructure patterns and landscapes?

QUESTIONS AND ANSWERS



RESTORATIVE JUSTICE PROJECT VALUE AND BOARD CHARTER UPDATE





Restorative Justice: Aim

Aim: Advance social and racial equity resulting in positive change.

What do we mean?

This process is committed to elevating the voices of and providing benefit to the historically impacted Albina community.

This process is committed to identifying, encouraging and, where appropriate, facilitating opportunities for agency partnerships to spur pathways for wealth generation.

This process is committed to recognizing the generational wealth and opportunity taken from the historic Albina community, specifically Portland's Black community, due to the construction of public and private developments including: I-5, the Moda Center, Veteran's Memorial Coliseum, the Convention Center, Legacy Emanuel Hospital, and other urban renewal.



Restorative Justice: Outcomes #1

Aim: Advance social and racial equity resulting in positive change.

Desired Outcomes

- Acknowledge the impacts of these developments on the community to earn community trust and advance short-and long-term actions that aim to create community stability, economic wealth and opportunity in Albina.
- Increase access to:
 - Decision-makers and decision-making processes for communities that have and still are experiencing systematic racism
 - Family wage jobs, healthcare, and education
 - Affordable housing to own and rent
 - Affordable business space



Restorative Justice: Outcomes #2

Aim: Advance social and racial equity resulting in positive change.

Desired Outcomes

- Provide opportunities for wealth generation through agency partnerships to provide a forward-leaning project where Black-owned business can thrive and spur pathways for wealth generation.
- Use development opportunities to foster public and private partnerships.
- Maximize Disadvantaged Business Enterprise opportunities at every phase of the project to gain jobs, build capacity, and address specific minority contracting needs in Portland.
- Benefit those historically harmed through actions taken.



Historic Albina Advisory Board

- *Do the aims resonate with you?*
- *Do the outcomes resonate with you?*
- *Are there outcomes that are missing?*
- *Are there outcomes that should be revised or replaced?*

DISCUSSION





Board Charter: Responsibilities

- Project design responsive to community needs, public health and aesthetic
- Connections between the highway and local streets and paths to improve movement for people
- Advice and feedback on equitable community engagement strategies
- Recommend ways to minimize community impacts during construction
- Adopt Project performance metrics
- Advise on elevated issues from COAC and elevate relevant issues to COAC
- Inform and advise on how project connections with other community efforts that contribute to restorative justice in the Albina community



Board Charter Update: Responsibilities

- Receive regular informational briefings on:
 - Highway cover governance and programming (separate from the project)
 - Structural design details
 - Project funding and financing plan
 - Project design and construction schedule

DISCUSSION



NEXT STEPS





Upcoming Future Considerations

- Shape the project performance measures
- Shape highway infrastructure design (e.g., overcrossings, landscaping)
- Direction on highway and local streets solutions
- Feedback on community impacts
- Shape the 30% design package

THANK YOU!

www.i5rosequarter.org

