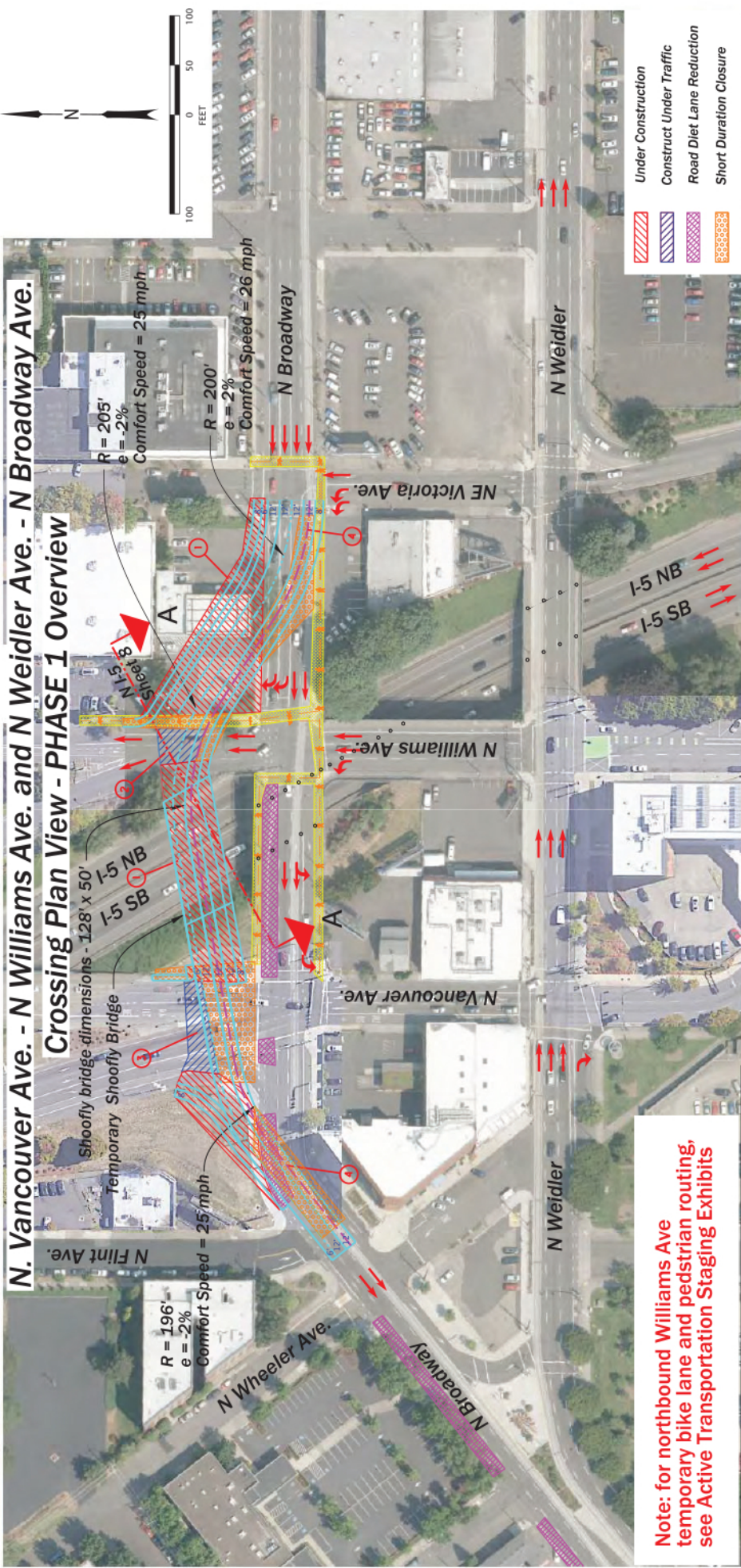


Appendix Q. Maintenance of Traffic Exhibits

This page is intentionally left blank.



N. Vancouver Ave. - N Williams Ave. and N Weidler Ave. - N Broadway Ave.
Crossing Plan View - PHASE 1 Overview

Note: for northbound Williams Ave temporary bike lane and pedestrian routing, see Active Transportation Staging Exhibits

South Cover Assumed Construction Sequence:

- 1) Phase 1, Stage 1: Construct temporary shoofly "off road" improvements. Begin construction of Temporary Shoofly Bridge. (See sheet 2)
- 2) Phase 1, Stage 2: Construct temporary Williams Avenue intersection improvements and complete eastern temporary bridge abutments (under lane reduction and limited duration full closure) (See sheet 3)
- 3) Phase 1, Stage 3: Construct temporary Vancouver Ave/I-5 SB Exit/Broadway intersection improvements (under lane reduction and limited duration full closure). Construct temporary signal work associated with interim streetcar alignments. (See sheet 3)
- 4) Phase 1, Stage 4: Construct temporary streetcar track connections on Broadway Ave (under lane reduction and limited duration full closure). Reopen to traffic in final configuration. (See sheet 4)

Assumptions:

- Maintain 2 WB lanes on Broadway and 3 EB lanes on Weidler St during construction.
- Flint and Vancouver bridges still in service in existing locations.
- Some construction activities may require short to medium duration street or ramp closures.
- Streetcar operates on existing tracks with short-duration interruptions to install temporary alignments.
- SB off ramp and NB on ramp may require limited duration closures during Streetcar track installation.

COMFORT SPEEDS SHOWN BASED ON HDM Table 3-5

HDR ENGINEERING, INC.
 1050 SW 6TH AVENUE, SUITE 1800
 PORTLAND, OR 97204-1134
 503.423.3700

I-5: ROSE QUARTER SEC. IMPROVEMENT PROJECT
 PACIFIC HIGHWAY
 MULTNOMAH COUNTY

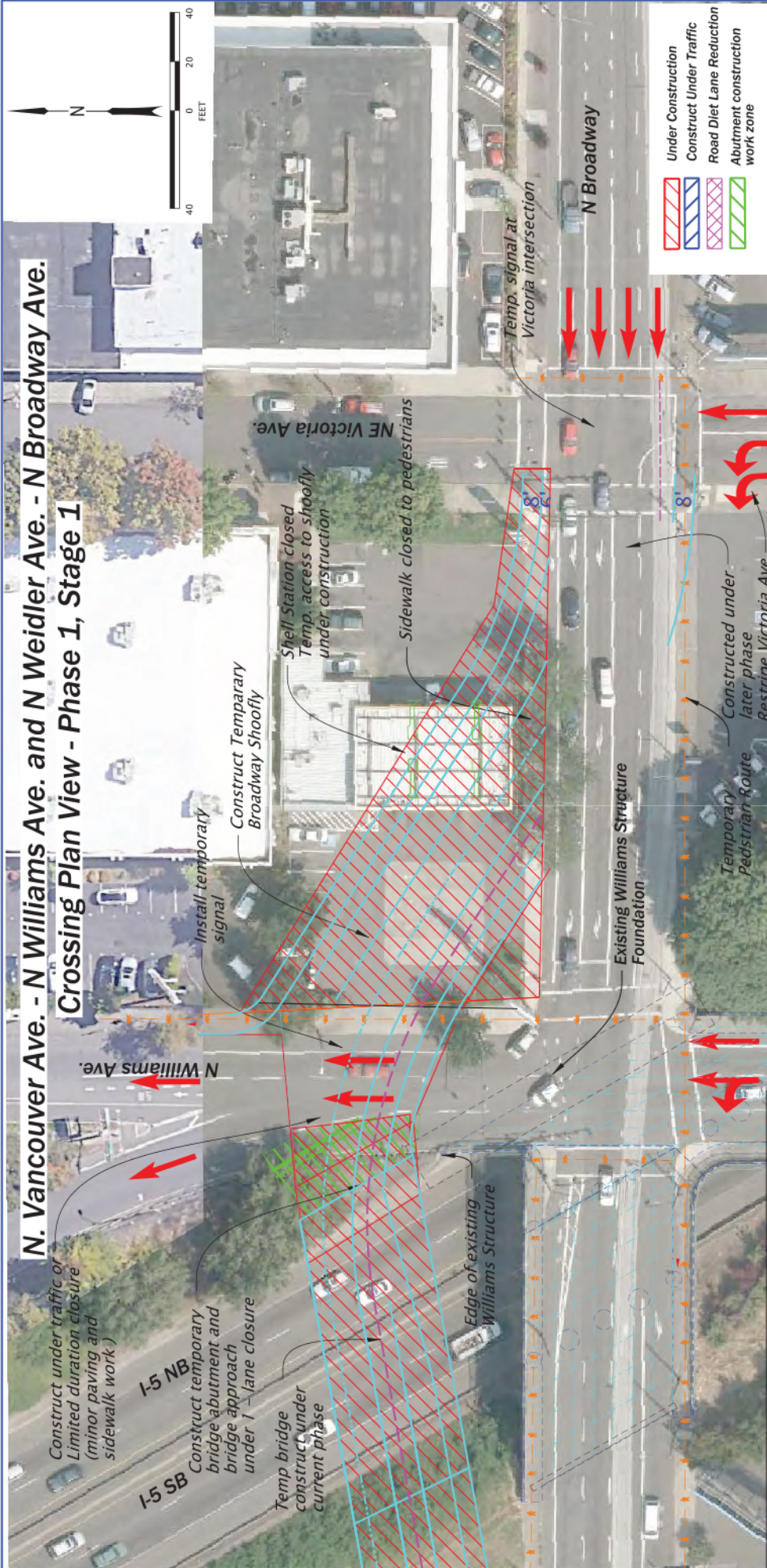
Designer: Amy Salisbury
 Reviewer: Simon Eng
 Checker: Colette Snuffin

SOUTH COVER STAGING

SHEET NO. 1

CONCEPT DESIGN INFORMATION ONLY

N. Vancouver Ave. - N Williams Ave. and N Weidler Ave. - N Broadway Ave. - N Broadway Ave. Crossing Plan View - Phase 1, Stage 1



South Cover Assumed Construction Sequence:



- 1) Construct temporary access through the Shell Gas Station to the WB Shoofly Structure
- 2) Reroute pedestrians to the south side of Broadway Street
- 3) Construct temporary Broadway shoofly bridge

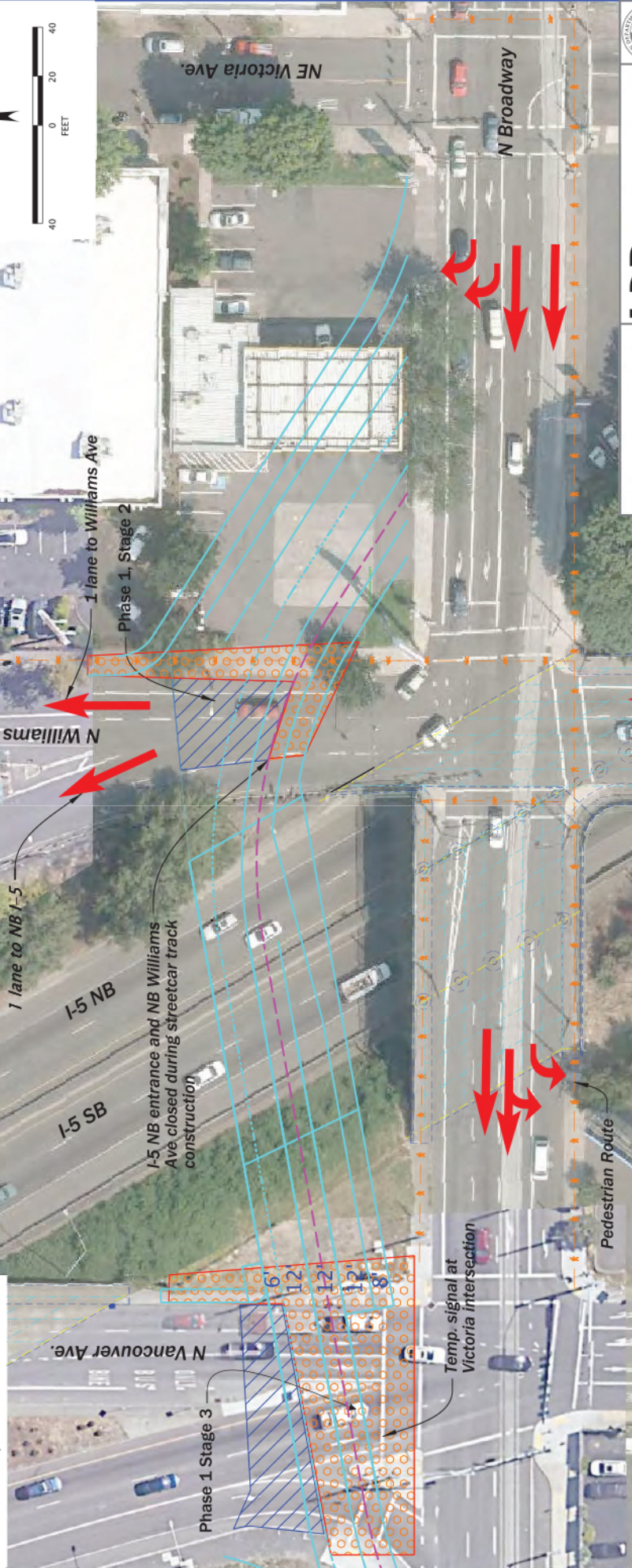
CONCEPT DESIGN
ACCEPTANCE PLANS
INFORMATION ONLY

	HDR ENGINEERING, INC. 1050 SW 6TH AVENUE, SUITE 1800 PORTLAND, OR 97204-1134 503.423.3700
	I-5: ROSE QUARTER SEC. IMPROVEMENT PROJECT PACIFIC HIGHWAY MULTNOMAH COUNTY
Designer: Amy Salisbury Drafter: Amy Salisbury	Reviewer: Simon Eng Checker: Colleen Swaffin
SOUTH COVER STAGING	
SHEET NO. 2	

N. Vancouver Ave. - N Williams Ave. and N Weidler Ave. - N Broadway Ave. - N Broadway Ave.

Crossing Plan View - Phase 1, Stage 2 & 3

-  Construct Under Traffic
-  Use temporary lane reductions or limited duration closures to complete abutment construction



- South Cover Assumed Construction Sequence:**
- 1) Phase 1, Stage 2: Complete construction of temporary Broadway @ Williams Ave intersection and temporary streetcar tracks under limited duration full closure
 - 2) Phase 1, Stage 3: Complete construction of temporary Vancouver/I-5 SB exit/Broadway intersection and temporary streetcar tracks under limited duration full closure.



HDR ENGINEERING, INC.
1050 SW 6TH AVENUE, SUITE 1800
PORTLAND, OR 97204-1134
503.423.3700

SOUTH COVER STAGING

SHEET NO. 3

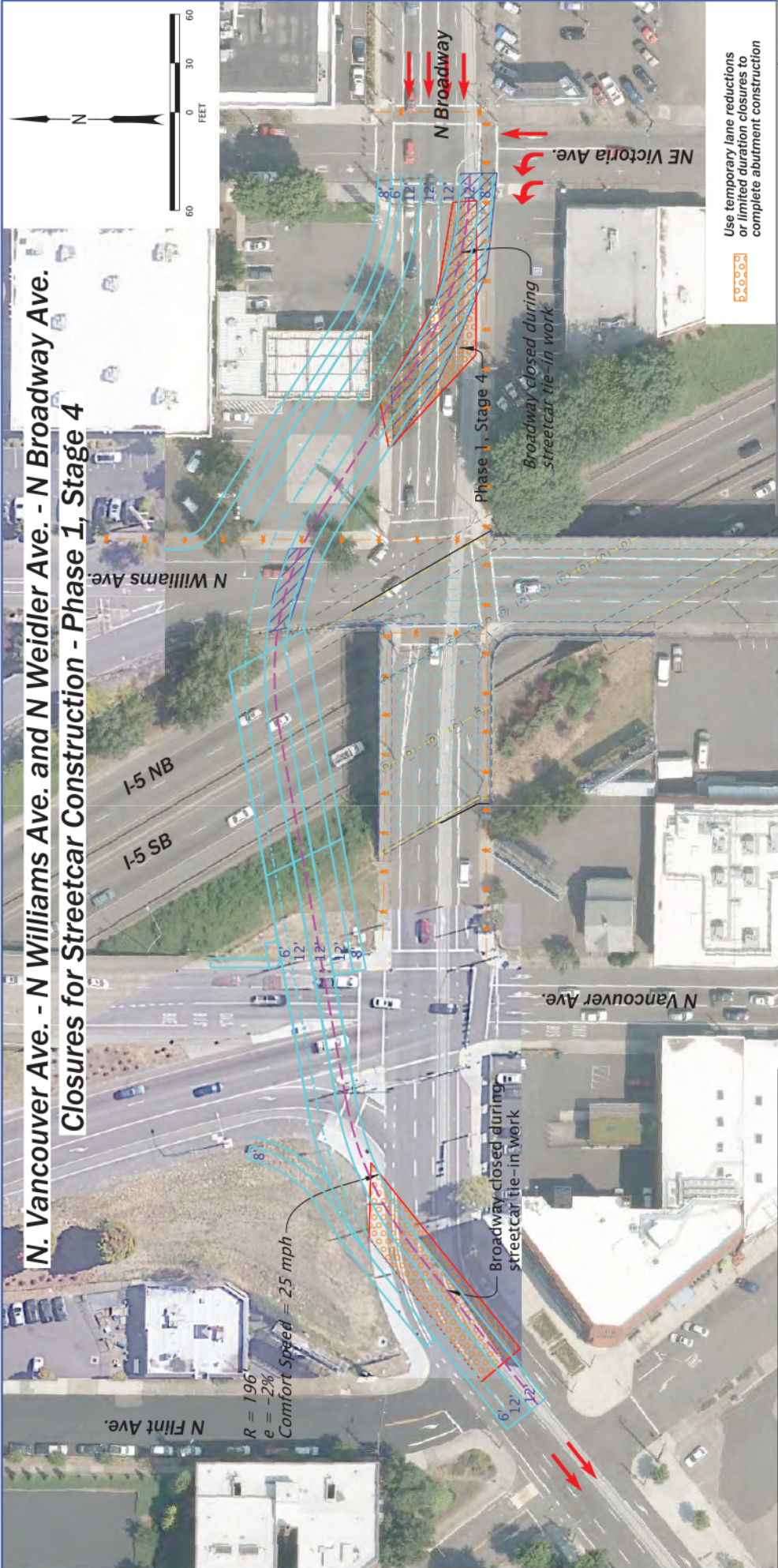
I-5: ROSE QUARTER SEC. IMPROVEMENT PROJECT

PACIFIC HIGHWAY MULTNOMAH COUNTY

Designer: Amy Salisbury
Reviewer: Simon Eng
Checker: Colette Snuffin

CONCEPT DESIGN
INFORMATION ONLY

N. Vancouver Ave. - N Williams Ave. and N Weidler Ave. - N Broadway Ave. Closures for Streetcar Construction - Phase 1, Stage 4



N Flint Ave.

R = 196'
e = -2%
Comfort Speed = 25 mph

I-5 NB
I-5 SB

N Williams Ave.

N Vancouver Ave.

NE Victoria Ave.

N Broadway

Phase 1, Stage 4
Broadway closed during streetcar tie-in work

Broadway closed during streetcar tie-in work

South Cover Assumed Construction Sequence:

- 1) Construct temporary streetcar track connections on Broadway Ave (under lane reduction and limited duration full closure)
- 2) Reopen to traffic in final configuration

Assumptions:

Assumes WB access to I-5 entrance ramp can be maintained.
Assumes short duration closure of WB Broadway at Vancouver Ave to construct Streetcar track tie-ins or additional temp widening to maintain one WB lane of travel.

CONCEPT DESIGN
INFORMATION ONLY

Use temporary lane reductions or limited duration closures to complete abutment construction

HDR ENGINEERING, INC.
1050 SW 5TH AVENUE, SUITE 1800
PORTLAND, OR 97204-1134
503.423.3700

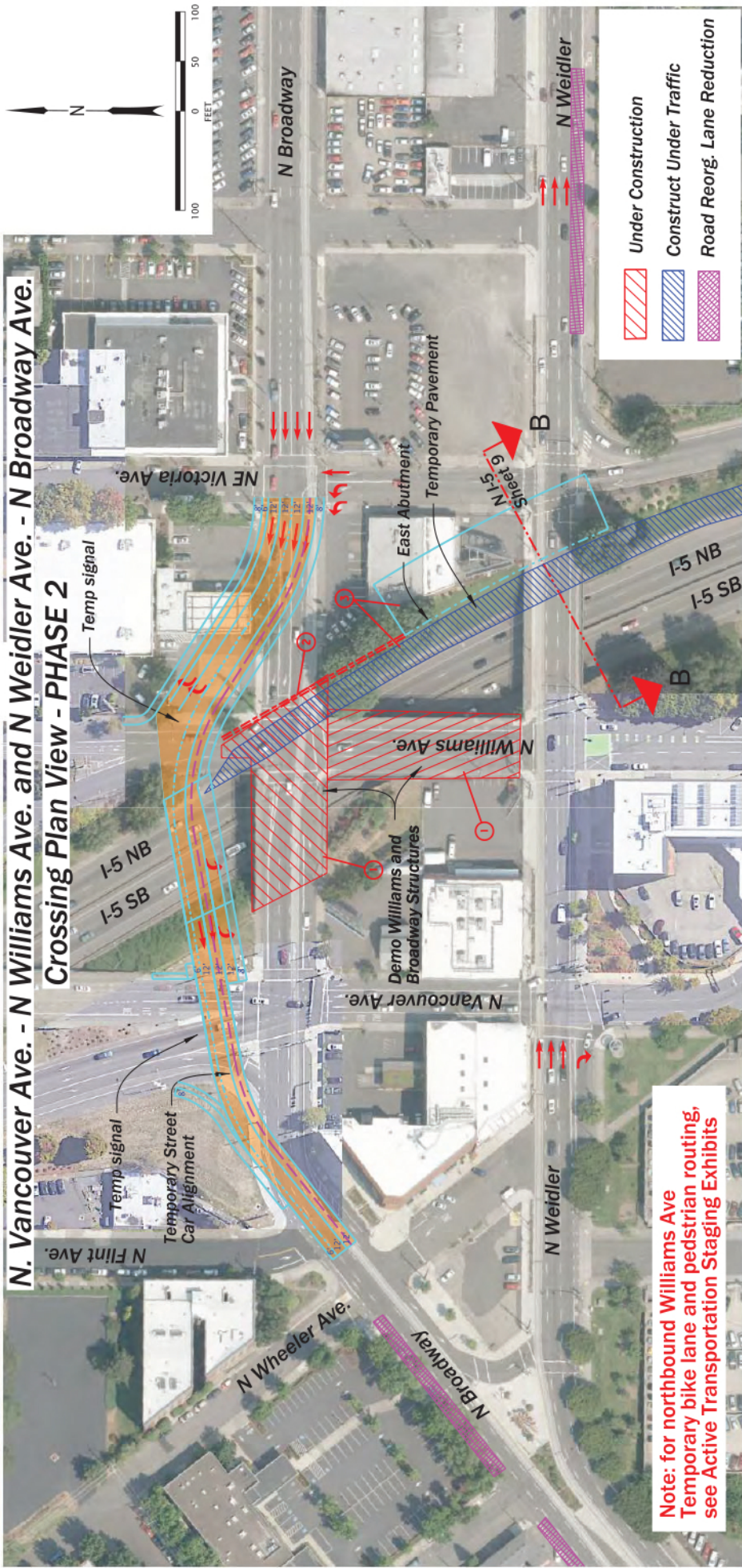
I-5: ROSE QUARTER SEC.
IMPROVEMENT PROJECT
PACIFIC HIGHWAY
MULTNOMAH COUNTY

Designer: Amy Salisbury
Reviewer: Simon Eng
Checker: Colette Snuffin

SOUTH COVER STAGING

SHEET NO. 4

**N. Vancouver Ave. - N Williams Ave. and N Weidler Ave. - N Broadway Ave.
Crossing Plan View - PHASE 2**



**Note: for northbound Williams Ave
Temporary bike lane and pedestrian routing,
see Active Transportation Staging Exhibits**

- Under Construction
- Construct Under Traffic
- Road Reorg. Lane Reduction

COMFORT SPEEDS SHOWN BASED ON HDM Table 3-5

South Cover Assumed Construction Sequence:

- 1) Close NB Williams Ave from Broadway to Weidler
Demo existing Broadway/Williams Bridge.
- 2) Construct portion of new eastern wall
- 3) Construction temporary wall and temporary NB pavement widening.

Assumptions:

- Maintain 2 WB lanes on Broadway and 3 EB lanes on Weidler St during construction.
- NB Williams St closed between Broadway and Weidler St.
- Two lanes in each direction will be maintained on I-5 during cover construction with local streets operating on temporary snooty structures.
- Temporary widening occurs at existing freeway grade (Subject to contractor preference).
- Detour NB Williams traffic to Victoria



HDR ENGINEERING, INC.
1050 SW 6TH AVENUE, SUITE 1800
PORTLAND, OR 97204-1134
503.423.3700

I-5: ROSE QUARTER SEC.
IMPROVEMENT PROJECT

PACIFIC HIGHWAY
MULTICOUNTY COUNTY

Designer: Amy Galloway
Reviewer: Shari King
Drafter: Amy Galloway
Checker: Corinne Smuffin

**CONCEPT DESIGN
INFORMATION ONLY**

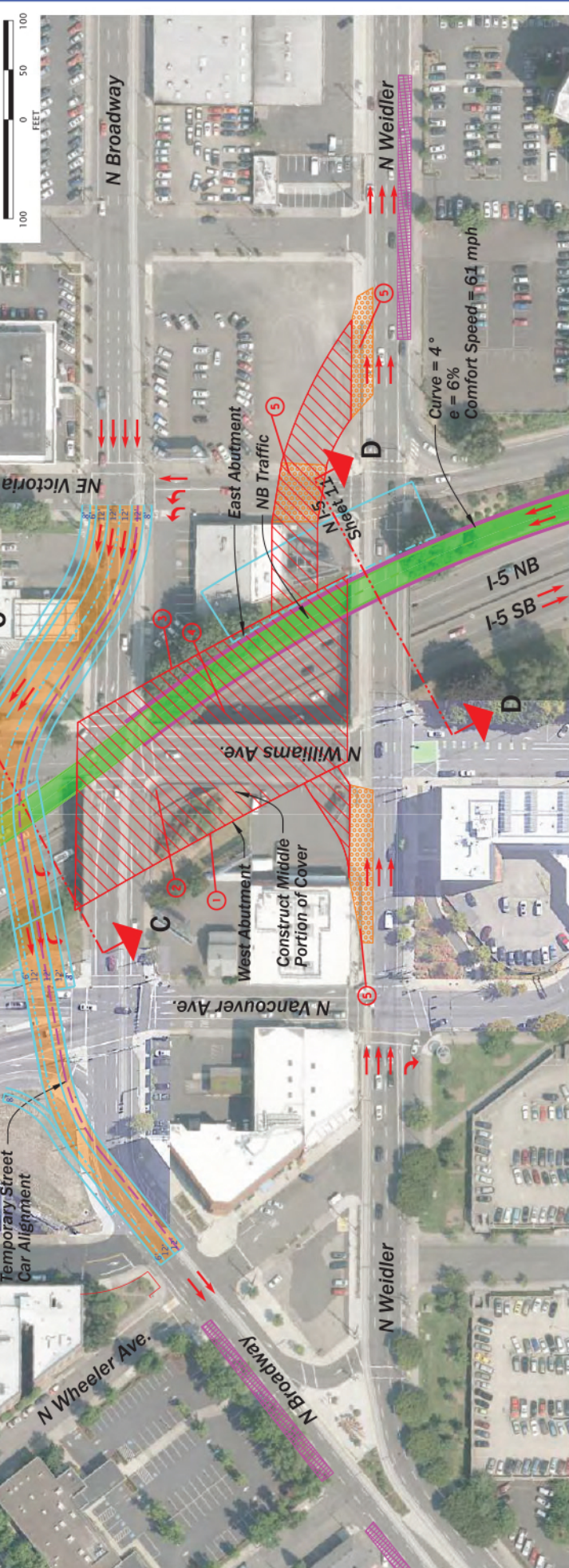
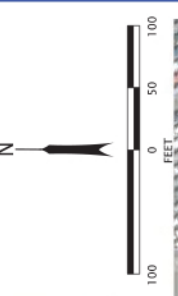
SOUTH COVER STAGING

SHEET NO.
5

N. Vancouver Ave. - N Williams Ave. and N Weidler Ave. - N Broadway Ave. - N Broadway Ave. Crossing Plan View - PHASE 3

Legend:

- Under Construction
- Road Reorg. Lane Reduction
- Short Duration Closure



South Cover Assumed Construction Sequence:

- 1) Construct exterior west cover abutment
- 2) Construct interior median abutment and median wall
- 3) Complete exterior east cover abutment
- 4) Construct middle portion of cover. Construct off-rampway temporary streetcar tracks and OCS
- 5) Construct in-rampway temporary streetcar track connections at Victoria and Weidler.

Assumptions:

- Maintain 2 WB lanes on Broadway and 3 EB lanes on Weidler St during construction.
- NB Williams St closed between Broadway and Weidler St.
- Two lanes in each direction will be maintained on I-5 during cover construction with Broadway street operating on temporary smooth structures.
- Temporary widening occurs at existing freeway grade (Subject to contractor preference).

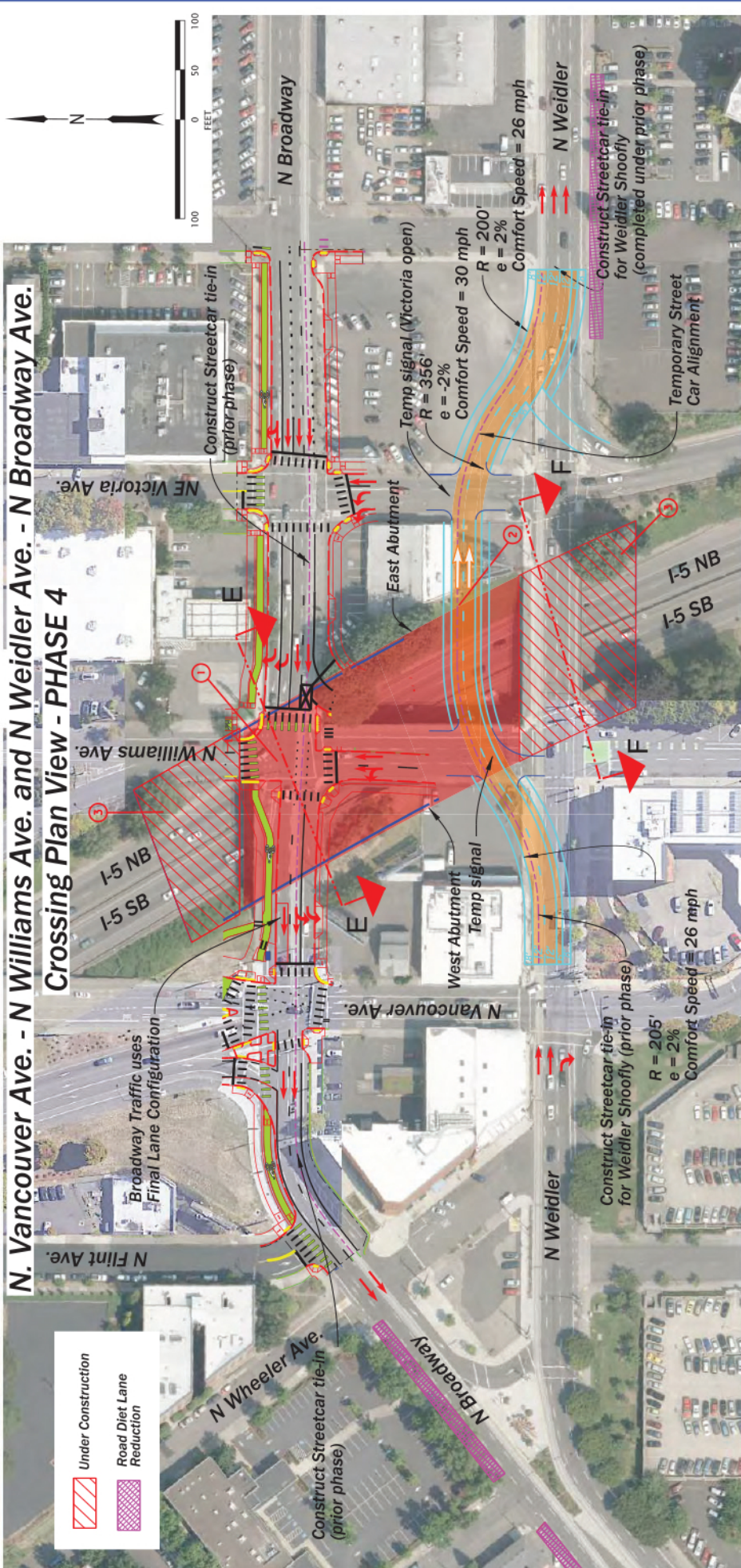
CONCEPT DESIGN
ACCEPTANCE PLANS
INFORMATION ONLY

COMFORT SPEEDS SHOWN BASED ON HDM Table 3-5

HDR
HDR ENGINEERING, INC.
1050 SW 6TH AVENUE, SUITE 1800
PORTLAND, OR 97204-1134
503.423.3700

I-5: ROSE QUARTER SEC. IMPROVEMENT PROJECT	
PACIFIC HIGHWAY MULTNOMAH COUNTY	
Designer: Amy Galloway	Reviewer: ShonKang
Drafter: Amy Galloway	Chester: Corinne Smulfin
SOUTH COVER STAGING	
SHEET NO. 6	

N. Vancouver Ave. - N Williams Ave. and N Weidler Ave. and N Broadway Ave. - N Broadway Ave. Crossing Plan View - PHASE 4



Under Construction

Road Diet Lane Reduction



- South Cover Assumed Construction Sequence:**
- 1) Move Broadway traffic including Streetcar onto newly constructed cover.
 - 2) Move Weidler traffic including Streetcar onto newly constructed cover in a shoofly-like alignment
 - 3) Construct north and south ends of the cover

Assumptions:

- Maintain 2 WB lanes on Broadway St. and 2 EB lanes on Weidler St during construction.
- Shifted two lanes in each direction of I5 traffic to the outside on temporary pavement in the respective directions to provide sufficient room for center pier column construction.
- Construct center pier foundations and columns.
- Construct center portion of south cover deck.

CONCEPT DESIGN
ACCEPTANCE PLANS
INFORMATION ONLY

COMFORT SPEEDS SHOWN BASED ON HDM Table 3-5

HDR

HDR ENGINEERING, INC.
1050 SW 6TH AVENUE, SUITE 1800
PORTLAND, OR 97204-1134
503.423.3700

I-5: ROSE QUARTER SEC. IMPROVEMENT PROJECT

PACIFIC HIGHWAY MULTINOMAH COUNTY

Designer: Amy Salisbury
Reviewer: Simon Eng
Checker: Corbett Snuffin

SHEET NO. 7

