

HISTORIC ALBINA ADVISORY BOARD

MEETING 16

February 15, 2022



WELCOME!

- ▶ Choose your phone or computer speakers/microphone for audio. If you use your phone, please mute your computer speakers to prevent feedback.
- ▶ Thank you for muting yourself when not speaking.
- ▶ This meeting is being live captioned. Public observers will remain muted. To provide public comment, please be ready to dial: (971) 247-1195.
- ▶ If you experience technical difficulties, call or text (503) 479-8674 and assistance will be provided as soon as possible.

AGENDA

- ▶ Welcome
- ▶ Principles of Agreement
- ▶ Public Comment
- ▶ Project Updates
 - » Director's Update
 - » Performance Measures
 - » Community Oversight Advisory Committee
- ▶ Design Updates
 - » Design and Construction Sequencing
 - » Early Work Package A & B
 - » Incorporating Art into Design
- ▶ Next Steps

7 PRINCIPLES OF AGREEMENT

1. Your voice matters
2. Be authentic and genuine
3. Listen for understanding
4. Deal with issues, not with people
5. Experience discomfort
6. Remain respectfully engaged
7. Expect & accept non-closure

PUBLIC COMMENT

- ▶ Raise your hand if you wish to make a public comment.
- ▶ Please mute your computer to avoid background noise.
- ▶ Focus your comments on today's meeting topics.
- ▶ Speakers have up to **2 minutes** for their comment and will be muted at "time."
- ▶ To provide more extensive comments, see options on page 1 of your agenda.

To make a live comment via phone, dial: 971-247-1195

Meeting ID: 869 3533 4143

Passcode: 445546

1. Dial ***9** to raise your hand.
2. After you are invited to speak, dial ***6** to unmute yourself.



PROJECT UPDATES



COMMUNITY OVERSIGHT ADVISORY COMMITTEE UPDATES

- ▶ January 20 – recommendations provided on the Diversity Plan and Performance Measures are discussed
- ▶ February 17 – adopt Diversity Plan

QUESTIONS AND ANSWERS



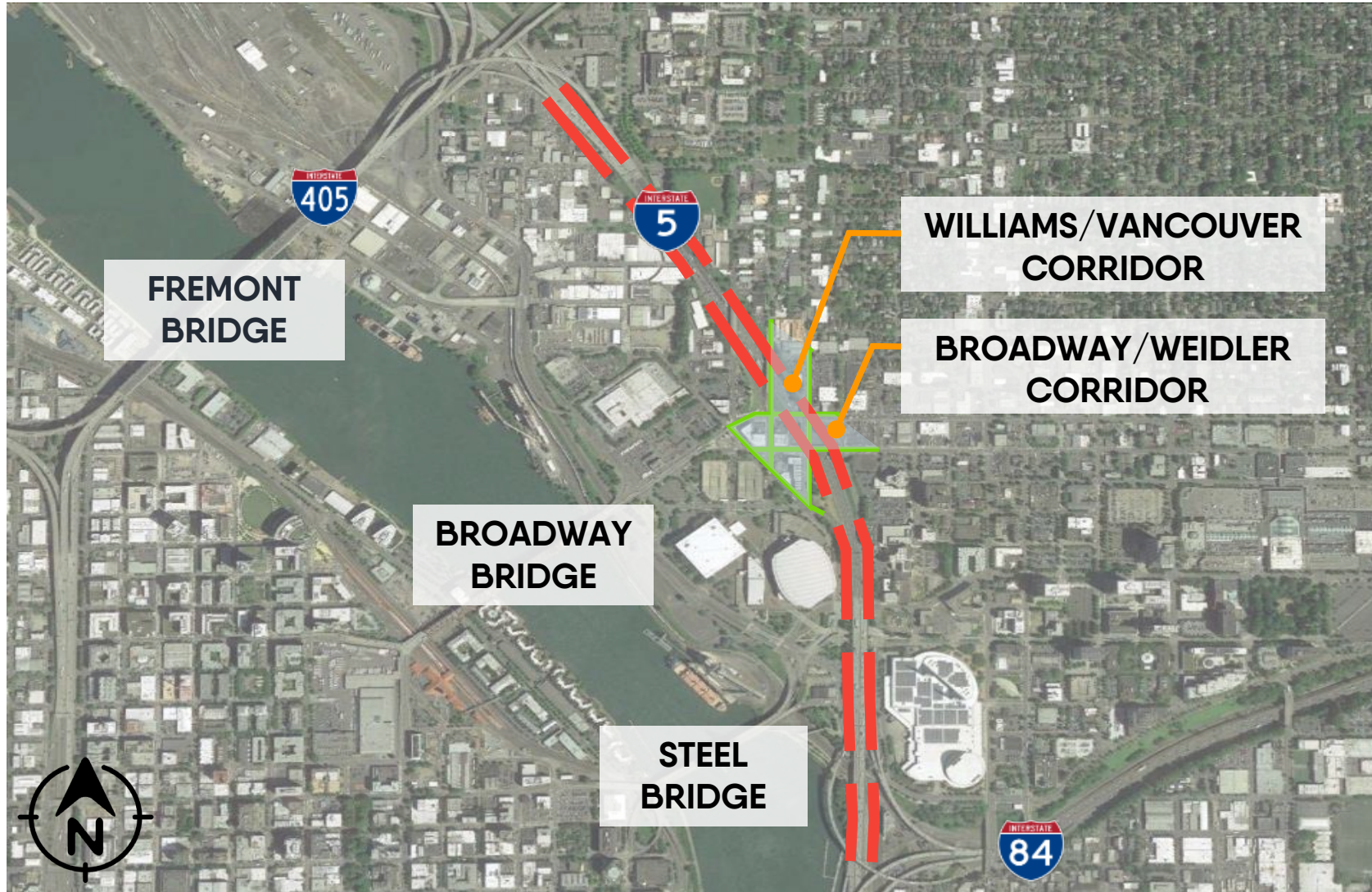
DESIGN UPDATES:

Environmental Review Process and
Work Package updates



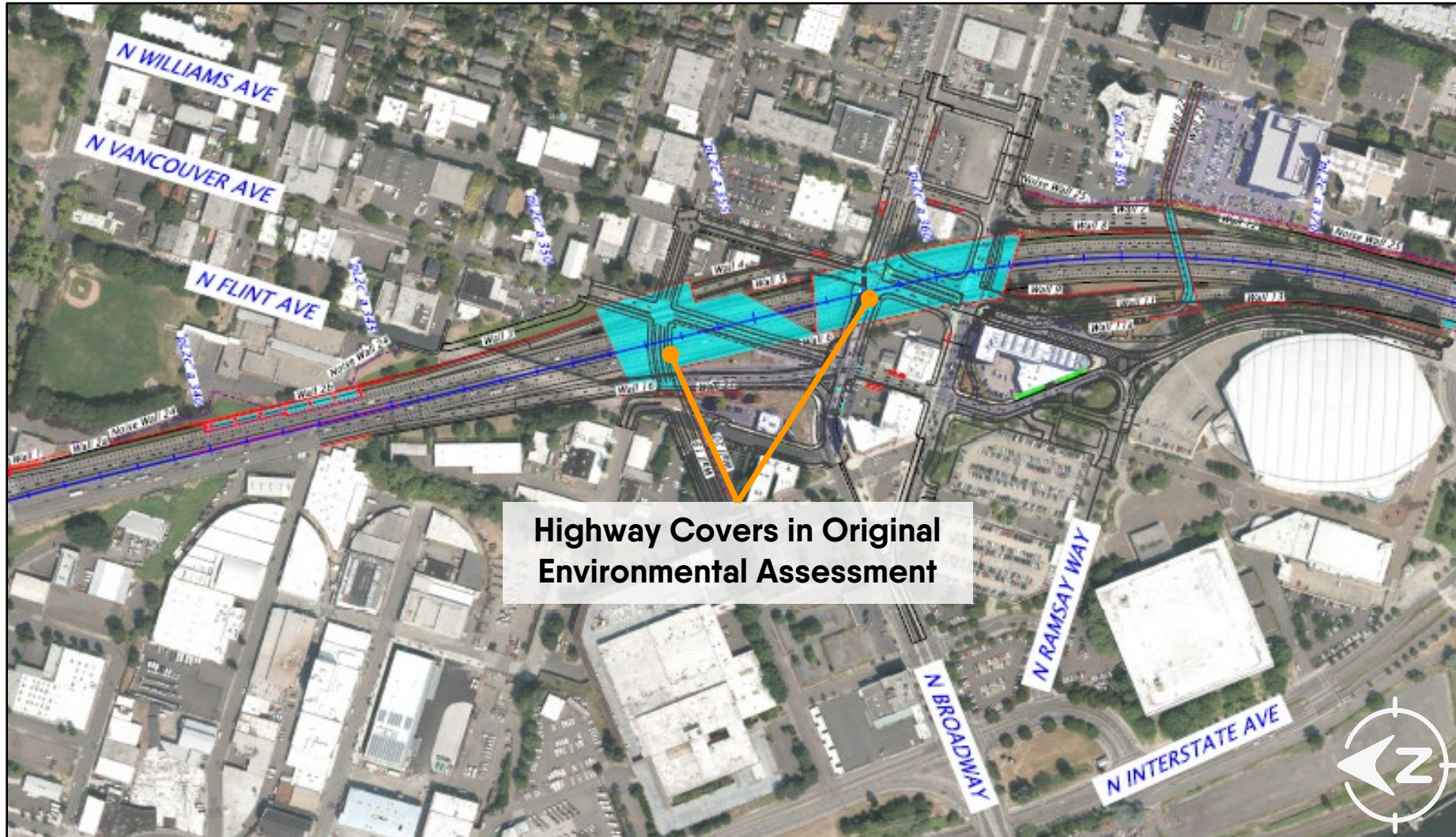
UPDATED ENVIRONMENTAL REVIEW PROCESS

OVERALL PROJECT LIMITS



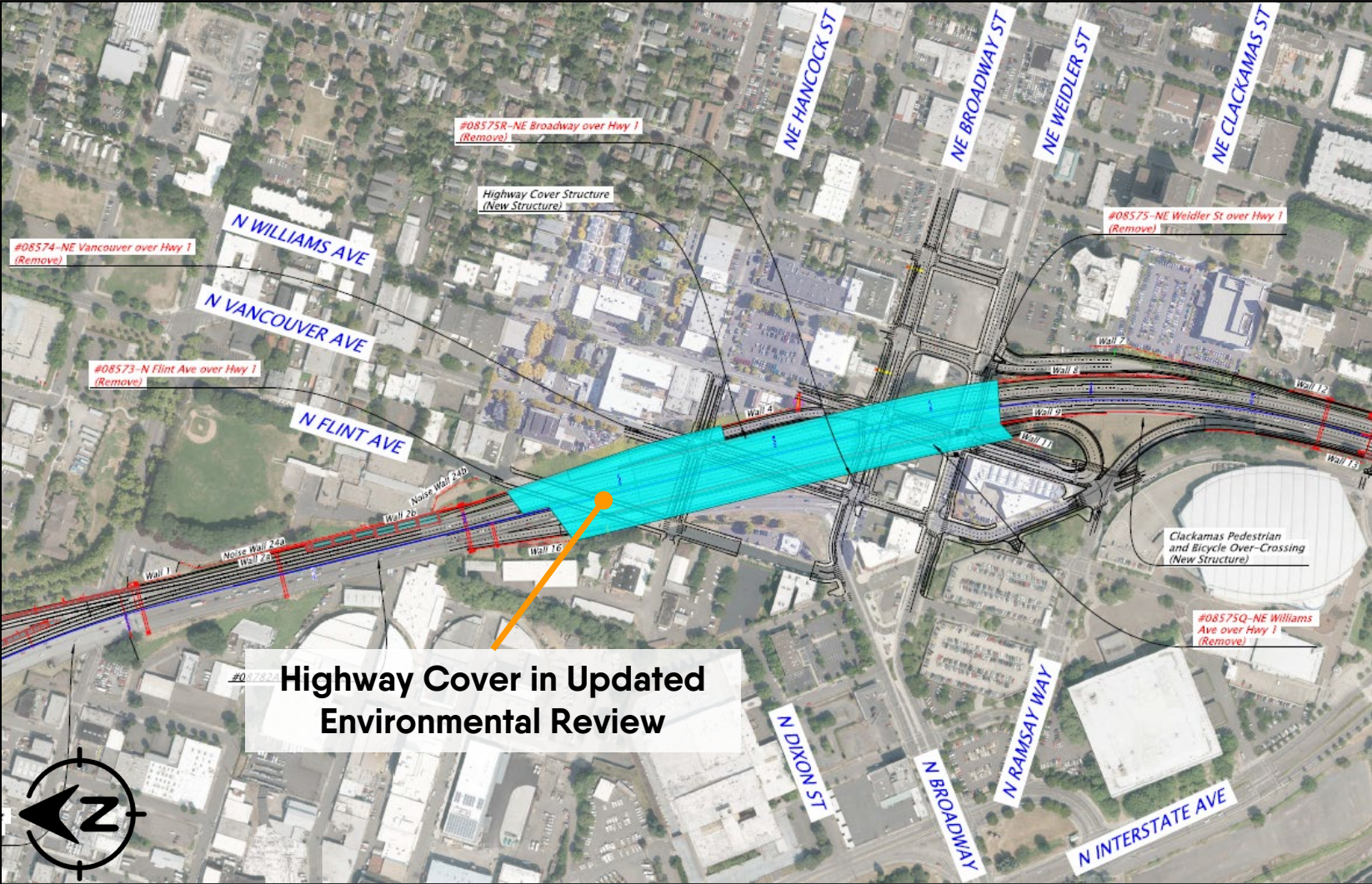
ORIGINAL ENVIRONMENTAL ASSESSMENT

(FHWA Finding of No Significant Impacts)



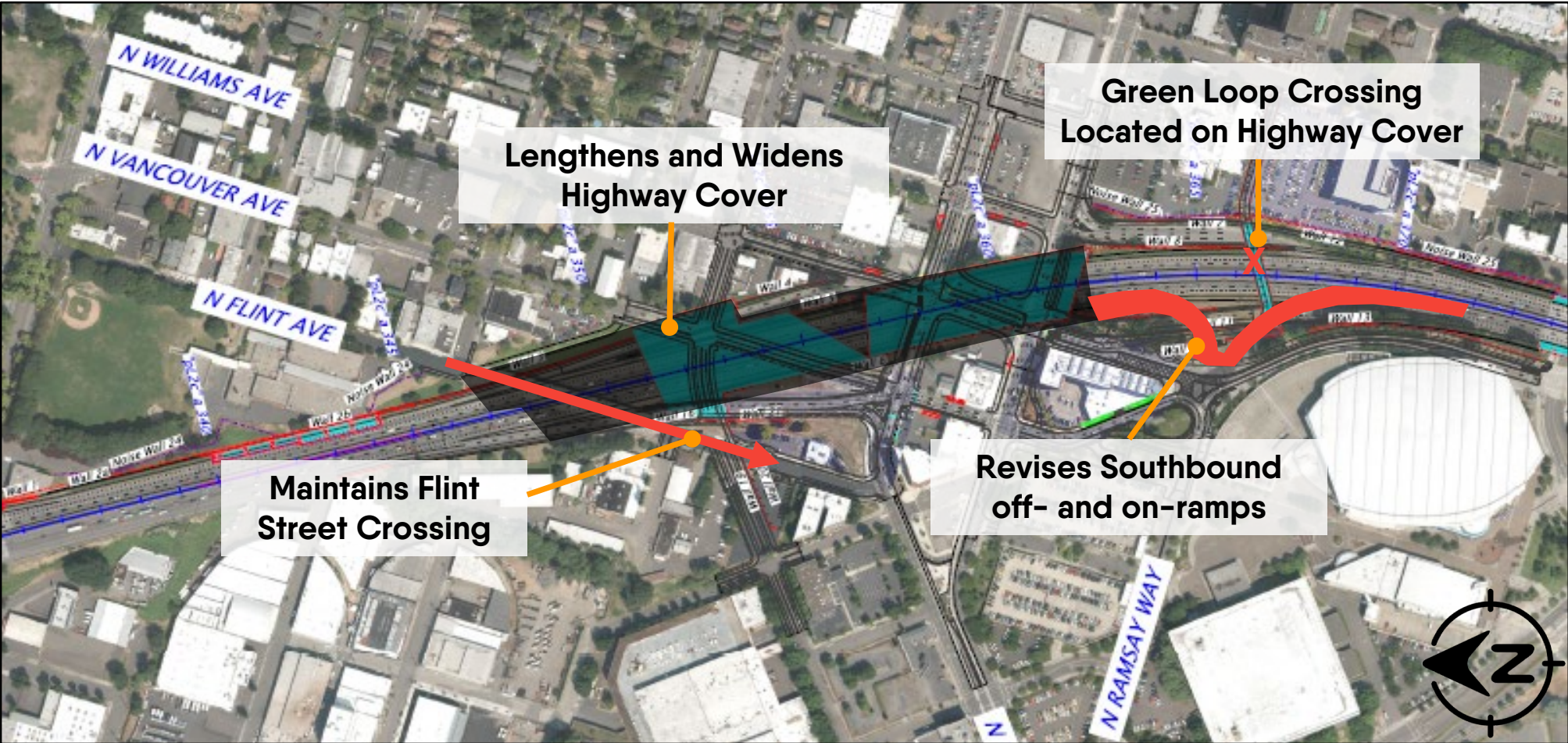
UPDATED ENVIRONMENTAL REVIEW

(for Proposed Hybrid 3 Concept)



UPDATED ENVIRONMENTAL REVIEW

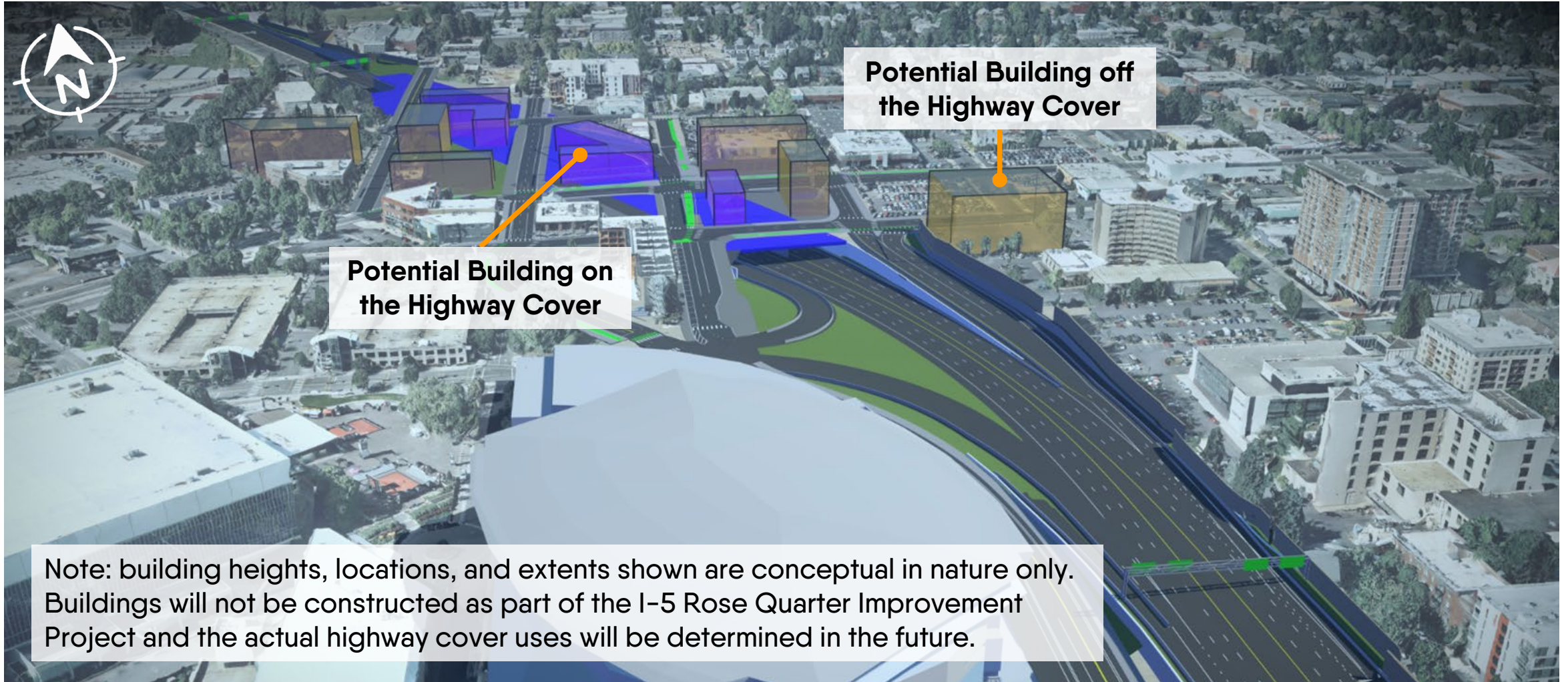
(for Proposed Hybrid 3 Concept)



Note: Changes associated with the Proposed Hybrid 3 Concept will be analyzed for potential impacts.

PROPOSED HYBRID 3 CONCEPT: HIGHWAY COVER USES

(To be determined in the future)



Potential Building on the Highway Cover

Potential Building off the Highway Cover

Note: building heights, locations, and extents shown are conceptual in nature only. Buildings will not be constructed as part of the I-5 Rose Quarter Improvement Project and the actual highway cover uses will be determined in the future.

UPDATED ENVIRONMENTAL REVIEW TIMELINE



UPDATED ENVIRONMENTAL REVIEW TECHNICAL REPORTS

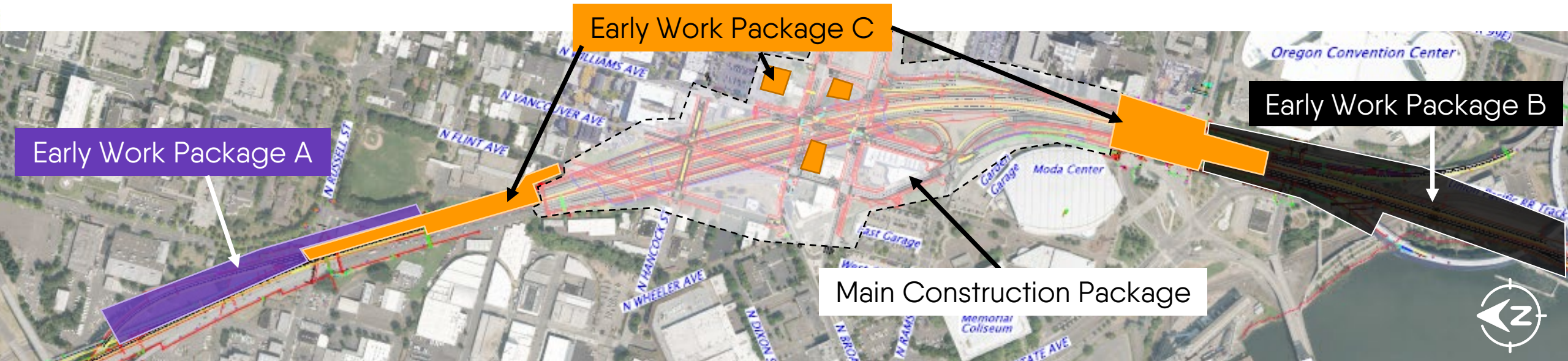
- ▶ Traffic
- ▶ Safety
- ▶ Active Transportation
- ▶ Transit
- ▶ Historic / 4(f)
- ▶ Land Use
- ▶ Right of Way
- ▶ Noise
- ▶ Air Quality
- ▶ Environmental justice
- ▶ Socioeconomics
- ▶ Climate Change

QUESTIONS AND ANSWERS



CONSTRUCTION WORK PACKAGES

CONSTRUCTION WORK PACKAGES - OVERVIEW

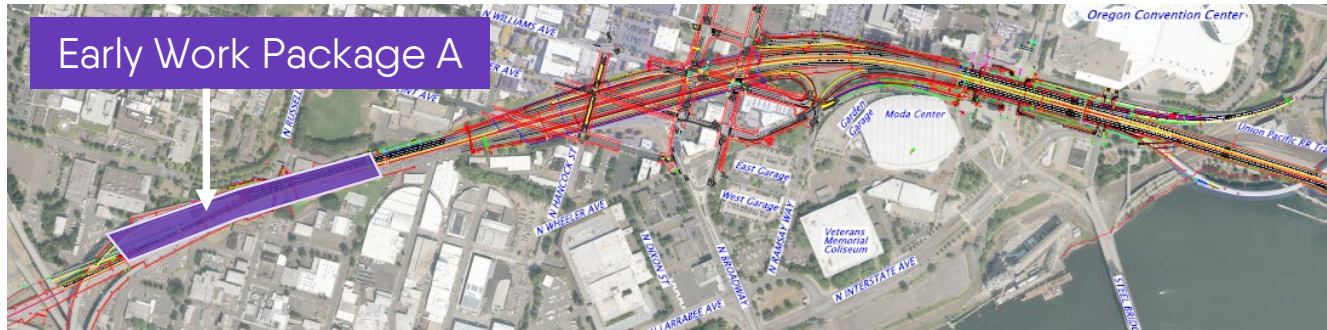


	2021	2022	2023	2024	2025	2026	2027	2028	2029
Proposed Hybrid 3 Concept Environmental Review	[Red hatched bar]								
Main Construction Package		Design				Construction			
Early Work Package A	Design		Construction						
Early Work Package B	Design		Construction						
Early Work Package C		Design		Construction					

EARLY WORK PACKAGE A



EARLY WORK PACKAGE A



Key Features

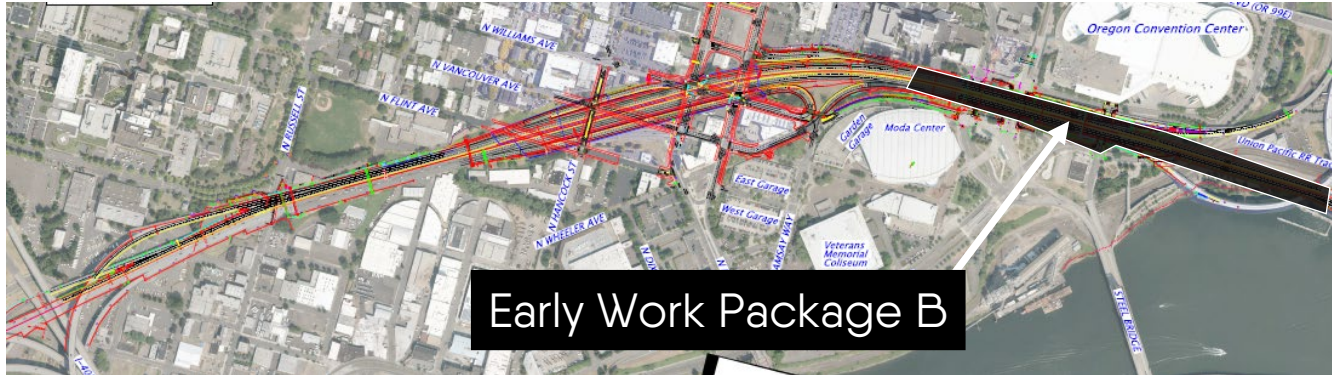
- ▶ I-5 Mainline improvements at the I-5/I-405 interchange
- ▶ I-5 safety improvements to I-405 and N. Greeley Ave off-ramps
- ▶ I-5 northbound retaining walls
- ▶ Stormwater facilities

The anticipated Early Work Package A, B, & C Disadvantaged Business Enterprise Range is \$28M to \$43M.

EARLY WORK PACKAGE B



EARLY WORK PACKAGE B



Key Features

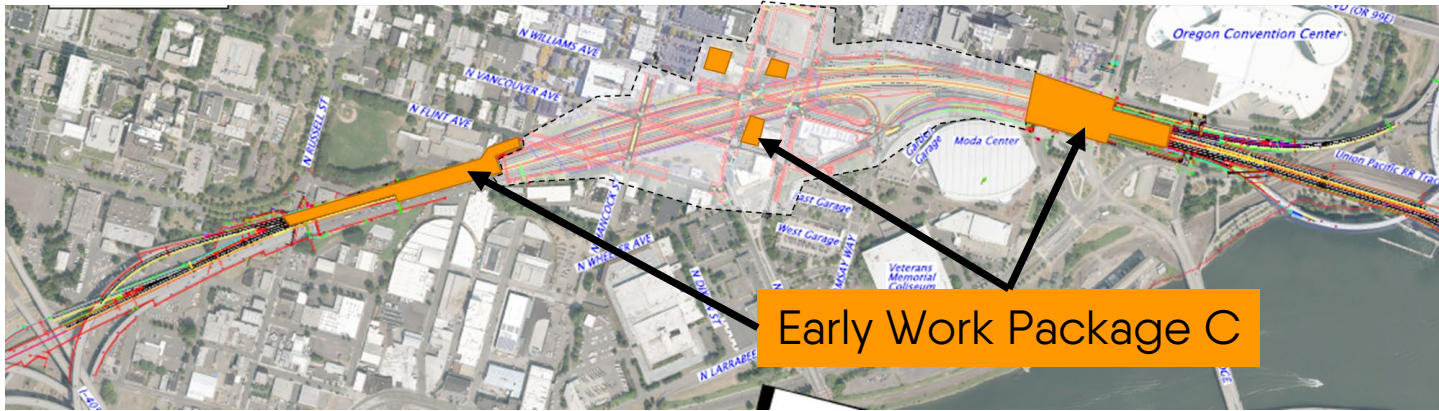
- ▶ Mainline improvements south of I-5/I-84 interchange
- ▶ I-5 safety improvements to I-84 and Morrison Bridge off-ramps
- ▶ I-5 retaining walls (both sides)
- ▶ Bridge barrier rail and Phase 1 seismic retrofits

The anticipated Early Work Package A, B, & C Disadvantaged Business Enterprise Range is \$28M to \$43M.

EARLY WORK PACKAGE C



EARLY WORK PACKAGE C



Key Features

- ▶ I-5 Mainline improvements and early work prior to Main Construction Package
- ▶ 30% Design Package submittal anticipated for August 2022
- ▶ Construction starts as soon as the first quarter of 2024

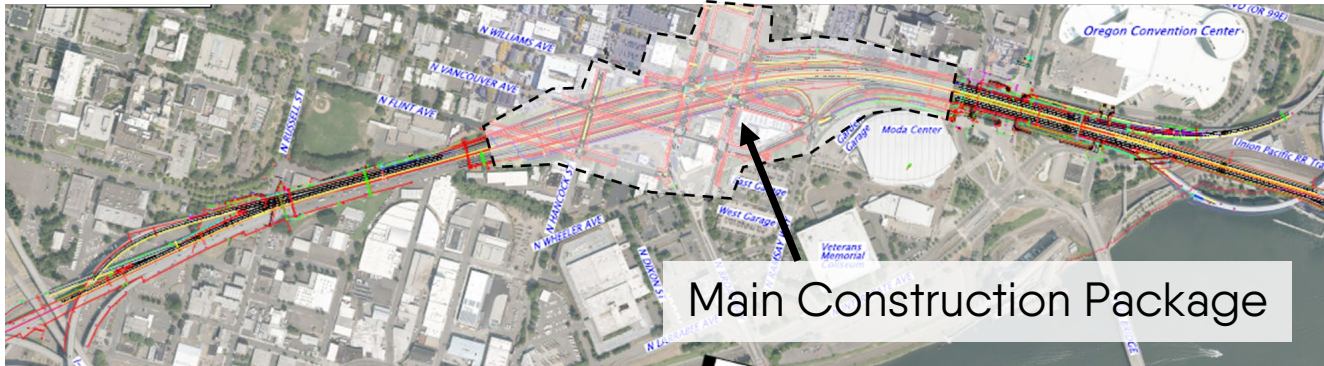
The anticipated Early Work Package A, B, & C Disadvantaged Business Enterprise Range is \$28M to \$43M.



MAIN CONSTRUCTION PACKAGE



MAIN CONSTRUCTION PACKAGE



Key Features

- ▶ Highway Cover
- ▶ Local Street Improvements
- ▶ Construction Start as soon as 2025

The anticipated Main Construction Package Disadvantaged Business Enterprise Range is \$86M to \$118M.

QUESTIONS AND ANSWERS



DESIGN UPDATES:

Early Work Package A & B



QUESTIONS AND ANSWERS



NEXT STEPS

- ▶ **Winter 2022**
 - » Develop intergovernmental agreements and project performance measures.
- ▶ **Summer/Fall 2022**
 - » Advance highway cover design, update Environmental Assessment, and conduct technical and environmental analyses.
 - » Update the Diversity Plan.
- ▶ **Late 2022/Early 2023**
 - » Finalize early work package design.

THANK YOU!

Website: www.i5rosequarter.oregon.gov

Email: i5rosequarter@odot.oregon.gov

Phone: 503-470-3127

